

OPT. HITCH END ENTRY  
OMIT FRONT WALL ENTRY  
AND WING WALL W/ THIS  
OPT

OPT. SCD

**APPROVED**  
**WVG**  
 REVISED  
 06 JAN 2022  
 FP-16-2994  
 Federal Manufactured  
 Home Construction  
 And Safety Standards

NOTES:

1. ALL CIRCUITS SHOWN ARE FOR REFERENCE AND MAY BE CHANGED BASED ON OPTIONAL COMPONENTS INSTALLED IN THE HOME.
2. REFER TO DAPIA MANUAL FOR SYMBOL CHART.
3. EITHER LIGHT OR RECEPTACLE MUST CONNECT TO SWITCH.
4. EF-1= 50 CFM EXHAUST FAN REQUIRED FOR THERMAL ZONE III. THERMAL ZONES I & II MAY USE FAN OR WINDOW W/1.5 SQ. FT. OPENABLE GLASS.
5. EF-2= 50 CFM EXHAUST FAN REQUIRED THERMAL ZONE I, II, AND III.
6. EF-3= 100 CFM RANGE EXHAUST FAN, SWITCH AT HOOD.
7. EF-4= WHOLE HOUSE VENTILATION REQUIREMENTS PER DAPIA MANUAL.
8. REFER TO DAPIA MANUAL OR THE MFG. INSTALLATION INSTRUCTIONS FOR PROPER WIRE SIZE AND BREAKER SIZE FOR SPECIFIC APPLIANCE AND MODEL BEING INSTALLED.
9. ALL SMOKE ALARMS TO BE LOCATED ON THE CEILING.
10. CARBON MONOXIDE ALARMS ARE ONLY REQUIRED WHEN HOME HAS OTHER FUEL BURNING APPLIANCES IS GARAGE READY OR IS BASEMENT READY. REFERENCE DAPIA MANUAL FOR ADDITIONAL INFORMATION.
11. DIMENSIONS SHOWN ON PRINT ARE APPROXIMATE AND TO BE USED ONLY AS A GUIDELINE.

CIRCUIT	CIRCUIT #	WIRE	BREAKER	CIRCUIT	CIRCUIT #	WIRE	BREAKER
LIGHT/RECEP	1A, 1B, 3A, 3B	14-2	15-SP	BATHROOM	16A	12-2	20-SP
KITCHEN/DINING	2A, 2B	12-2	20-SP	OPT GAS RANGE	9B	SEE NOTE #8	SEE NOTE #8
WASHER	12A	12-2	20-SP	OPT SW/AC	11A,B	SEE NOTE #8	SEE NOTE #8
DRYER	5A, 7B	SEE NOTE #8	SEE NOTE #8	FREEZER	N/A	SEE NOTE #8	SEE NOTE #8
				SMOKE ALARM	8A	SEE NOTE #8	SEE NOTE #8
					4B	SEE NOTE #8	SEE NOTE #8
					4A, 6B	SEE NOTE #8	SEE NOTE #8
					5B, 7A	SEE NOTE #8	SEE NOTE #8
					15B	SEE NOTE #8	SEE NOTE #8
					5A, 8A, B, 10A, B	SEE NOTE #8	SEE NOTE #8
					8A	SEE NOTE #8	SEE NOTE #8

900 SQ.FT. (STD PLAN "CONDITIONED")  
 N/A SQ.FT. (W/OPT. PORCH/RECESS "CONDITIONED")

CMH  
 MANUFACTURING

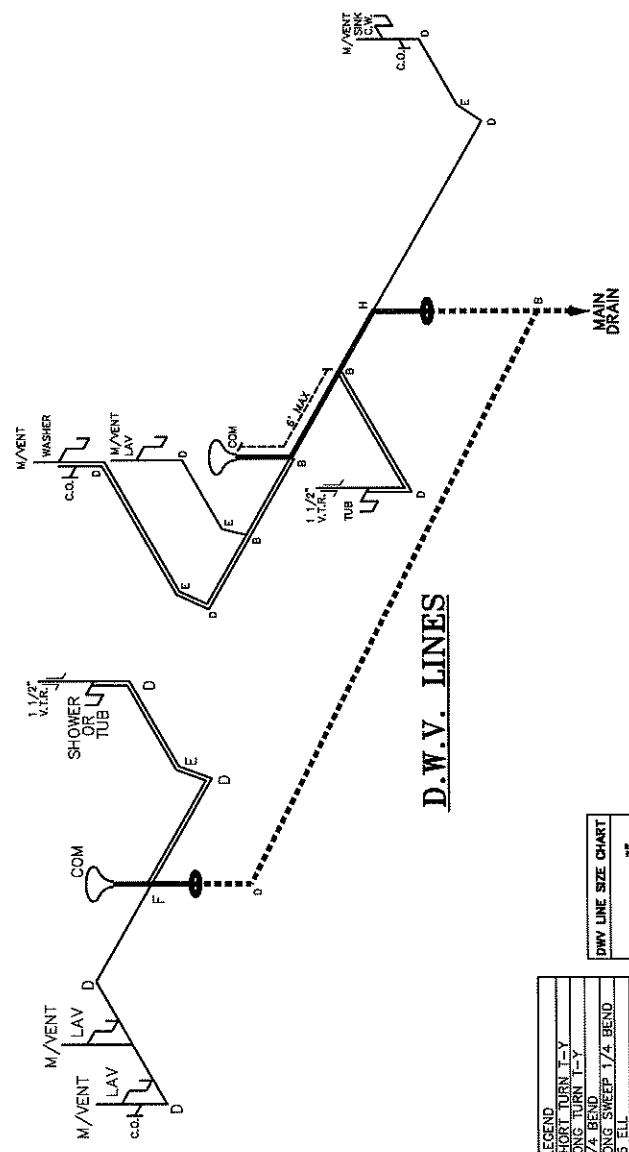
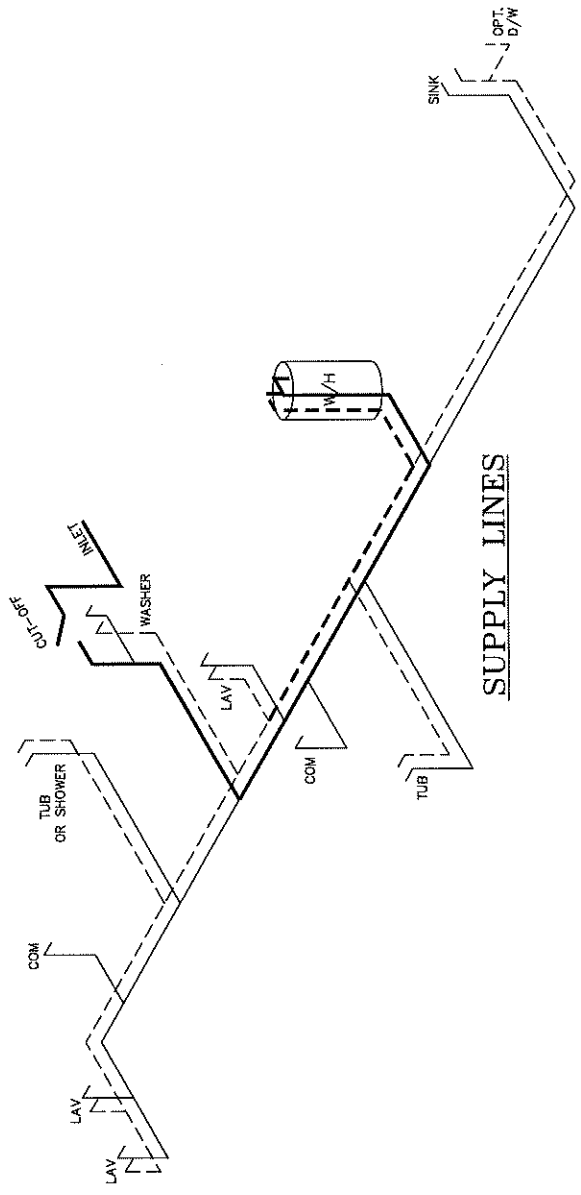
Model #: SAV16G02A  
 Date: 11/19/24  
 Scale: NTS  
 Drawing #: 375 | 22

Product Designer: E HARDWICK  
 16 x 60 Riverview

**ELECTRICAL PLAN - 06**

NOTE:  
 DASHED LINES INDICATE HOT WATER  
 SOLID LINES INDICATE COLD WATER

— = 3/4"  
 — = 1/2"



**APPROVED**

**D.W.V.**

REVISED  
 06 JAN 2022  
 FP-16-2994

**APPROVED**

Federal Manufactured  
 Home Construction  
 And Safety Standards

900 SQ.FT. (STD PLAN "CONDITIONED")	N/A SQ.FT. (W/OPT. PORCH/RECESS "CONDITIONED")
Model #: SAV16602A	Drawing #:
Date: 11/19/21	Scale: NTS
Product Designer: E HARDWICK	375122
16 x 60 Riverview	

**D.W.V. and Supply Lines**

LEGEND	
A	SHORT TURN T-Y
B	LONG TURN T-Y
C	LONG SWEEP
D	45° ELL SWEEP 1/4" BEND
E	45° ELL
F	DBL SANITARY TEE
G	4x3 CLOSET ELL
H	DOUBLE ELL
I	22 1/2° ELL
J	45° Y
K	LONG TURN STREET ELBOW
L	45 FTG ELL

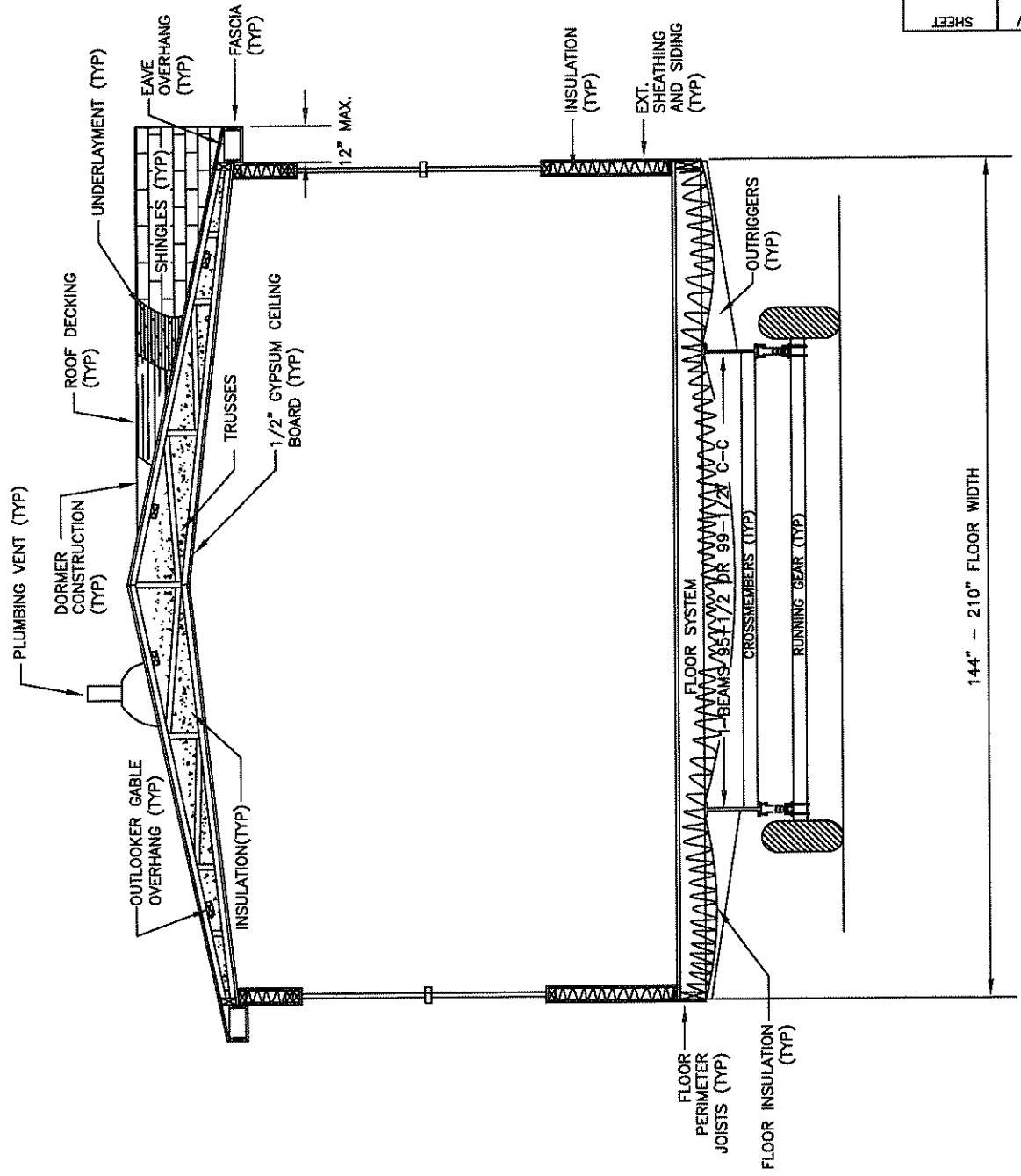
DWV LINE SIZE CHART	
—	= 3"
—	= 2"
—	= 1 1/2"

**CMH MANUFACTURING, INC.**  
 Home Office  
 5000 Clayton Road, Maryville, TN 37804  
 PH: 865.380.3000 FAX: 865.380.3781

APPROVAL STAMP

TITLE  
**SINGLE WIDE  
 CROSS-SECTION**

BY JGM	DATE 12/03/14	CHECKED	DATE
-----------	------------------	---------	------



DWG NO.	XS-1.02
REV	--
SHEET	--

NTS  
**CROSS-SECTION**