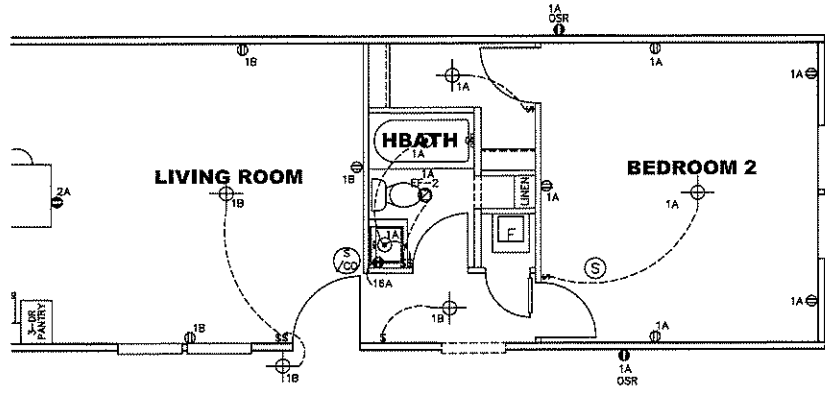
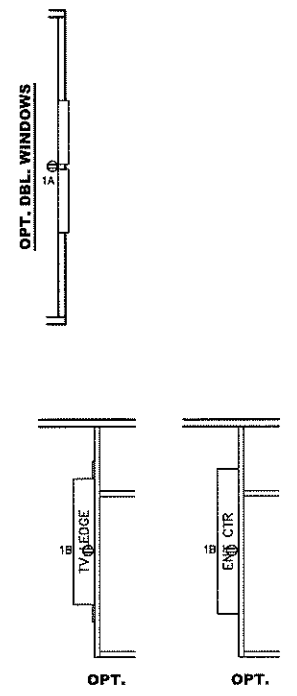


BATH OPT. 2
76' & 80' OPTS ONLY

BATH OPT. 1
76' & 80' OPTS ONLY



2 BEDROOM OPT
72' & 76' ONLY



- NOTES:
1. ALL CIRCUITS SHOWN ARE FOR REFERENCE AND MAY BE CHANGED BASED ON OPTIONAL COMPONENTS INSTALLED IN THE HOME.
 2. REFER TO DAPIA MANUAL FOR SYMBOL CHART.
 3. EITHER LIGHT OR RECEPTACLE MUST CONNECT TO SWITCH.
 4. EF-1= 50 CFM EXHAUST FAN REQUIRED FOR THERMAL ZONE III THERMAL ZONES I & II MAY USE FAN OR WINDOW W/1.5 SQ. FT. OPENABLE GLASS.
 5. EF-2= 50 CFM EXHAUST FAN REQUIRED THERMAL ZONE I, II, AND III.
 6. EF-3= 100 CFM RANGE EXHAUST FAN, SWITCH AT HOOD.
 7. EF-4= WHOLE HOUSE VENTILATION REQUIREMENTS PER DAPIA MANUAL.
 8. REFER TO DAPIA MANUAL OR THE MFG. INSTALLATION INSTRUCTIONS FOR PROPER WIRE SIZE AND BREAKER SIZE FOR SPECIFIC APPLIANCE AND MODEL BEING INSTALLED.
 9. ALL SMOKE ALARMS TO BE LOCATED ON THE CEILING.
 10. CARBON MONOXIDE ALARMS ARE ONLY REQUIRED WHEN HOME HAS EITHER FUEL BURNING APPLIANCES, IS GARAGE READY OR IS BASEMENT READY. REFERENCE DAPIA MANUAL FOR ADDITIONAL INFORMATION.
 11. DIMENSIONS SHOWN ON PRINT ARE APPROXIMATE AND TO BE USED ONLY AS A GUIDELINE.

APPROVED **RWC** **APPROVED**

REVISED
08 FEB 2022
FP-16-2997

Federal Manufactured
Home Construction
And Safety Standards

CIRCUIT	CIRCUIT #	WIRE	BREAKER	CIRCUIT	CIRCUIT #	WIRE	BREAKER	CIRCUIT	CIRCUIT #	WIRE	BREAKER
LIGHT/RECEP	1A, 1B, 3A, 3B	14-2	15-SP	WATER HEATER	4A, 6B		SEE NOTE #8	BATHROOM	16 A	12-2	20-SP
KITCHEN/DINING	2A, 2B	12-2	20-SP	RANGE	5B, 7A		SEE NOTE #8	OPT C/DISP	9B		SEE NOTE #8
WASHER	12A	12-2	20-SP	OPT GAS RANGE	15B		SEE NOTE #8	OPT SPA/HP/JAC	11A, B		SEE NOTE #8
DRYER	5A, 7B		SEE NOTE #8	FURNACE	6A, 8A, B, 10A, B		SEE NOTE #8	FREEZER	N/A		SEE NOTE #8
				OPT D/WASH	9A		SEE NOTE #8				
				SMOKE ALARM	4B		SEE NOTE #8				

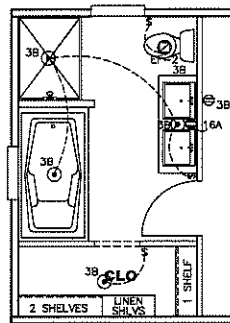
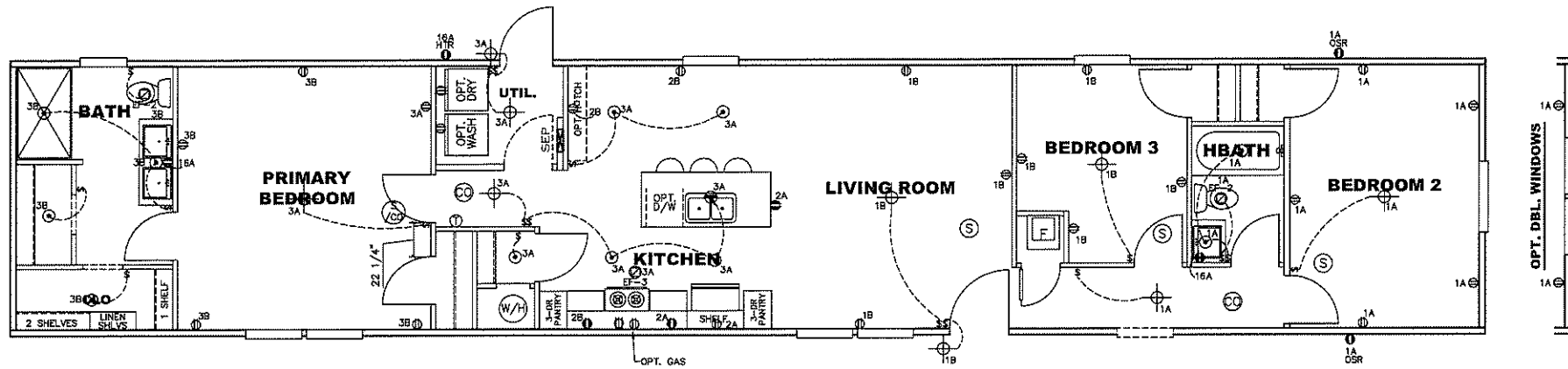
1140 SQ.FT. (STD PLAN "CONDITIONED")
N/A SQ.FT. (W/OPT. PORCH/RECESS "CONDITIONED")

CMH
MANUFACTURING

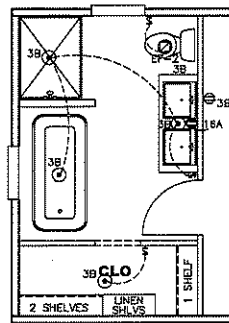
Model #: 5AV16723A Drawing #: 375126
Date: 1/21/21 Scale: NTS

Product Designer: E HARDWICK 16 x 72 PEYTON

76FT OPT. ELEC. PAGE OPTIONS-06



BATH OPT. 2
76' & 80' OPTS ONLY



BATH OPT. 1
76' & 80' OPTS ONLY

NOTES:

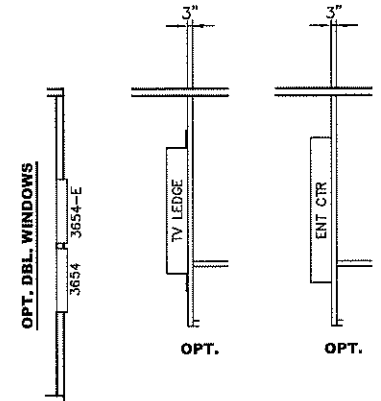
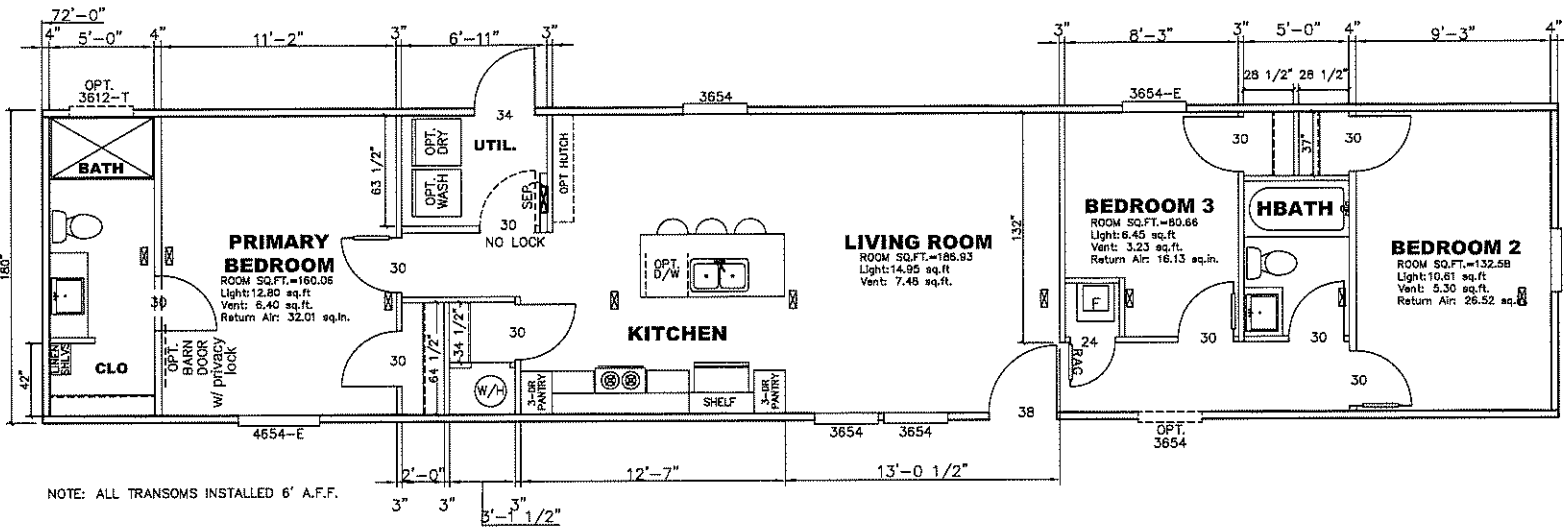
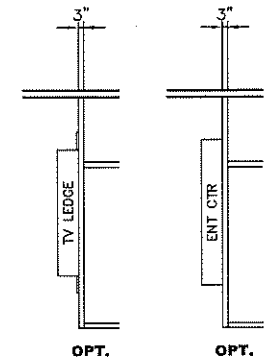
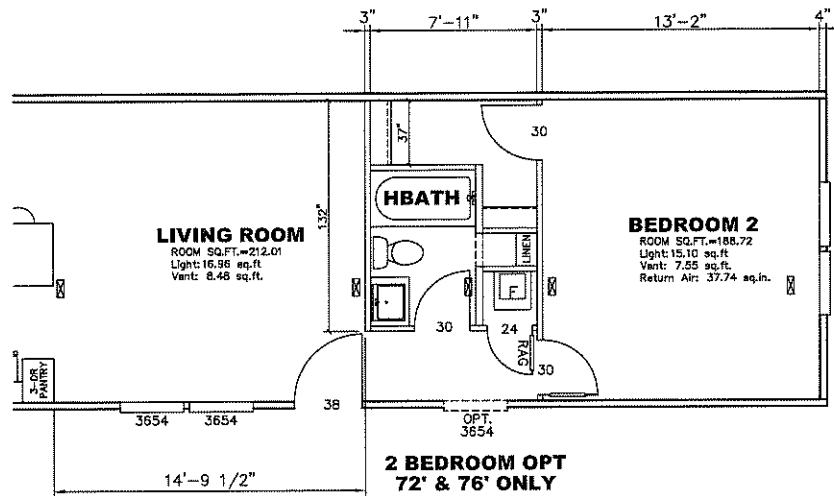
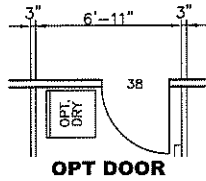
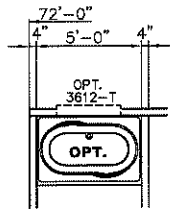
1. ALL CIRCUITS SHOWN ARE FOR REFERENCE AND MAY BE CHANGED BASED ON OPTIONAL COMPONENTS INSTALLED IN THE HOME.
2. REFER TO DAPIA MANUAL FOR SYMBOL CHART.
3. EITHER LIGHT OR RECEPTACLE MUST CONNECT TO SWITCH.
4. EF-1= 50 CFM EXHAUST FAN REQUIRED FOR THERMAL ZONE III THERMAL ZONES I & II MAY USE FAN OR WINDOW W/1.5 SQ. FT. OPENABLE GLASS.
5. EF-2= 50 CFM EXHAUST FAN REQUIRED THERMAL ZONE I, II, AND III.
6. EF-3= 100 CFM RANGE EXHAUST FAN, SWITCH AT HOOD.
7. EF-4= WHOLE HOUSE VENTILATION REQUIREMENTS PER DAPIA MANUAL.
8. REFER TO DAPIA MANUAL OR THE MFG. INSTALLATION INSTRUCTIONS FOR PROPER WIRE SIZE AND BREAKER SIZE FOR SPECIFIC APPLIANCE AND MODEL BEING INSTALLED.
9. ALL SMOKE ALARMS TO BE LOCATED ON THE CEILING.
10. CARBON MONOXIDE ALARMS ARE ONLY REQUIRED WHEN HOME HAS EITHER FUEL BURNING APPLIANCES, IS GARAGE READY OR IS BASEMENT READY. REFERENCE DAPIA MANUAL FOR ADDITIONAL INFORMATION.
11. DIMENSIONS SHOWN ON PRINT ARE APPROXIMATE AND TO BE USED ONLY AS A GUIDELINE.

APPROVED HWC APPROVED
 21 DEC 2021
 FP-16-2997
 Federal Manufactured
 Home Construction
 And Safety Standards

CIRCUIT	CIRCUIT #	WIRE	BREAKER	CIRCUIT	CIRCUIT #	WIRE	BREAKER	CIRCUIT	CIRCUIT #	WIRE	BREAKER
LIGHT/RECEP	1A,1B,3A,3B	14-2	15-SP	WATER HEATER	4A,6B		SEE NOTE #B	BATHROOM	16A	12-2	20-SP
KITCHEN/DINING	2A, 2B	12-2	20-SP	RANGE	5B,7A		SEE NOTE #B	OPT G/DISP	9B		SEE NOTE #B
WASHER	12A	12-2	20-SP	OPT GAS RANGE	15B		SEE NOTE #B	OPT SPA/HP/IBC	11A,B		SEE NOTE #B
DRYER	5A,7B		SEE NOTE #B	FURNACE	6A,8A,B,10A,B		SEE NOTE #B	FREEZER	N/A		SEE NOTE #B
				OPT D/WASH	8A		SEE NOTE #B				
				SMOKE ALARM	4B		SEE NOTE #B				

1200 SQ.FT. (STD PLAN "CONDITIONED")
 N/A SQ.FT. (W/OPT. PORCH/RECESS "CONDITIONED")

CMH MANUFACTURING	Model #: SAV16723A	Drawing #:
	Date: 12/1/21	Scale: NT5
Product Designer: E HARDWICK	16 x 72 PEYTON	
80FT OPT. ELEC. PAGE OPTIONS-06		

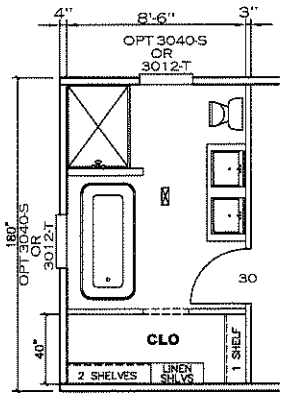
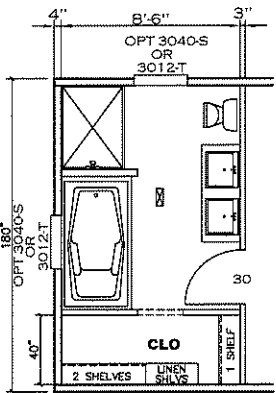
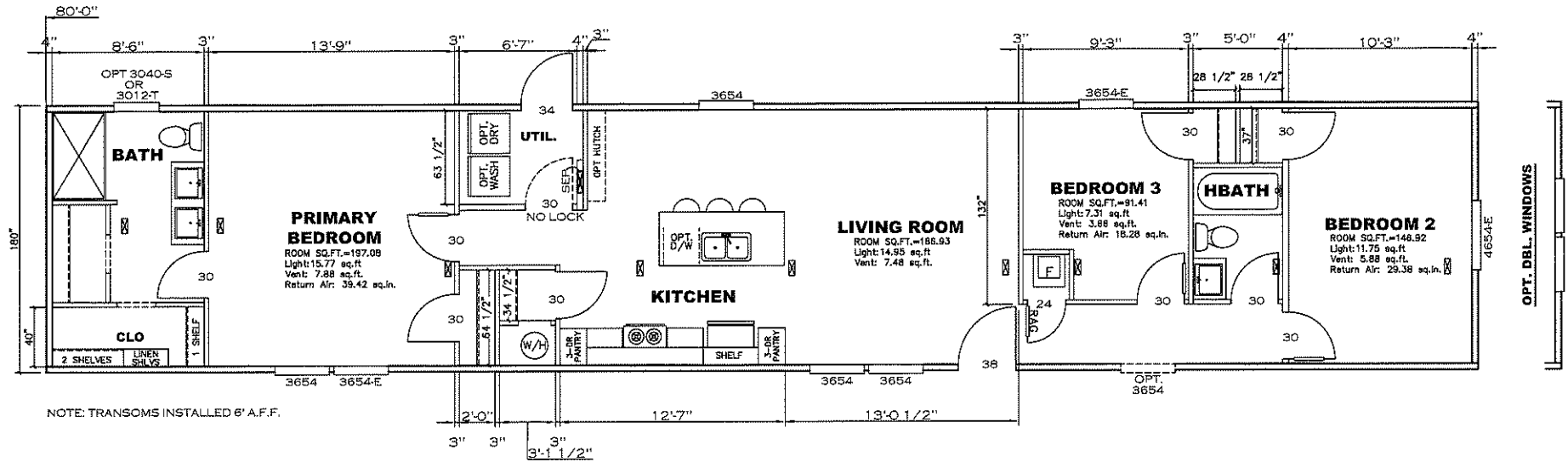


NOTE: ALL TRANSOMS INSTALLED 6' A.F.F.

APPROVED RWC APPROVED
 REVISED
 08 FEB 2022
 FP-16-2997
 Federal Manufactured
 Home Construction
 And Safety Standards

1080 SQ.FT. (STD PLAN "CONDITIONED")
 N/A SQ.FT. (W/OPT. PORCH/RECESS "CONDITIONED")

CMH MANUFACTURING	Model #: SAV16723A	Drawing #:
	Date: 12/1/21	Scale: NTS
Product Designer: E HARDWICK		16 x 72 PEYTON
FLOOR PLAN		



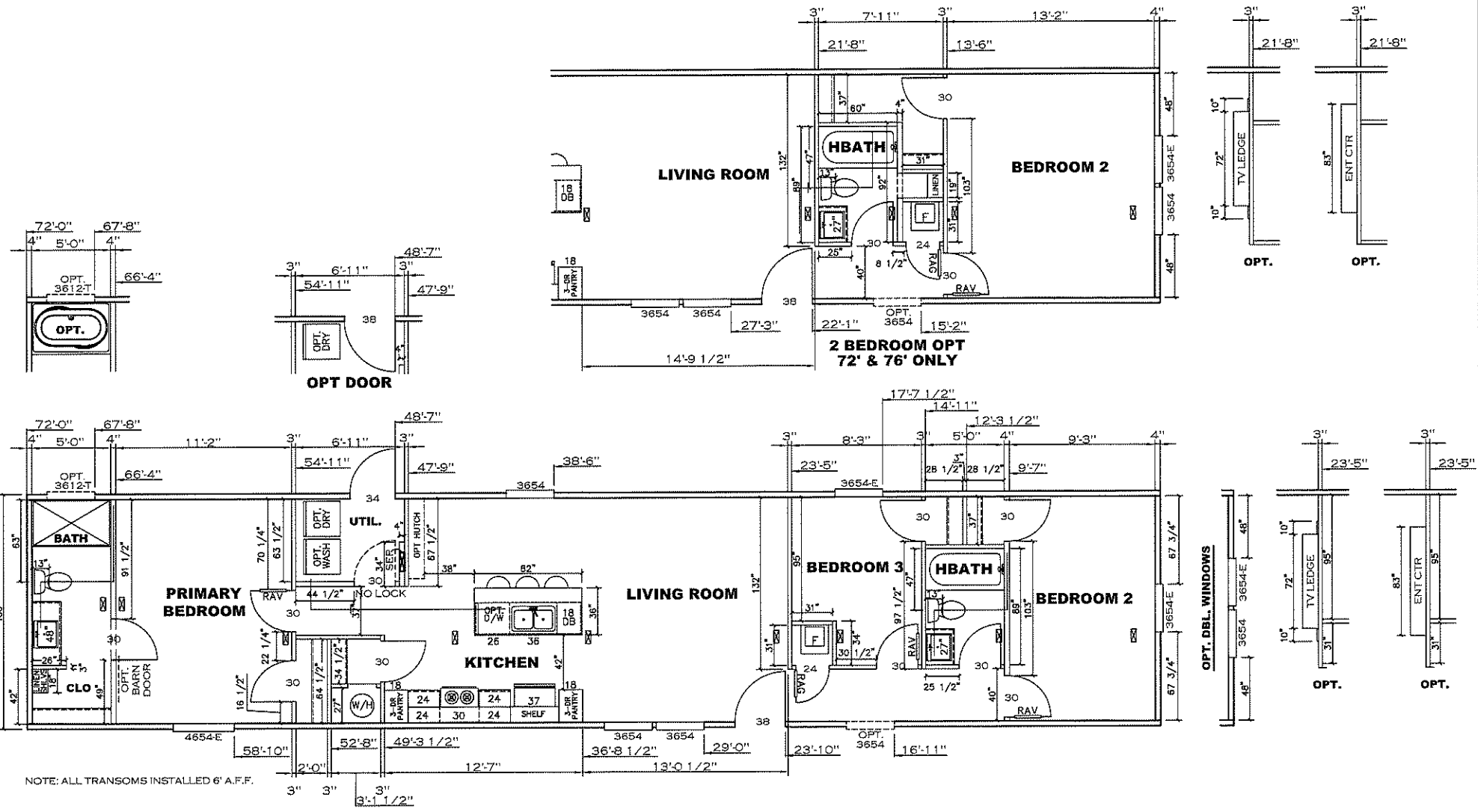
APPROVED **RWC** **APPROVED**

21 DEC 2021
FP-16-2997

Federal Manufactured
Home Construction
And Safety Standards

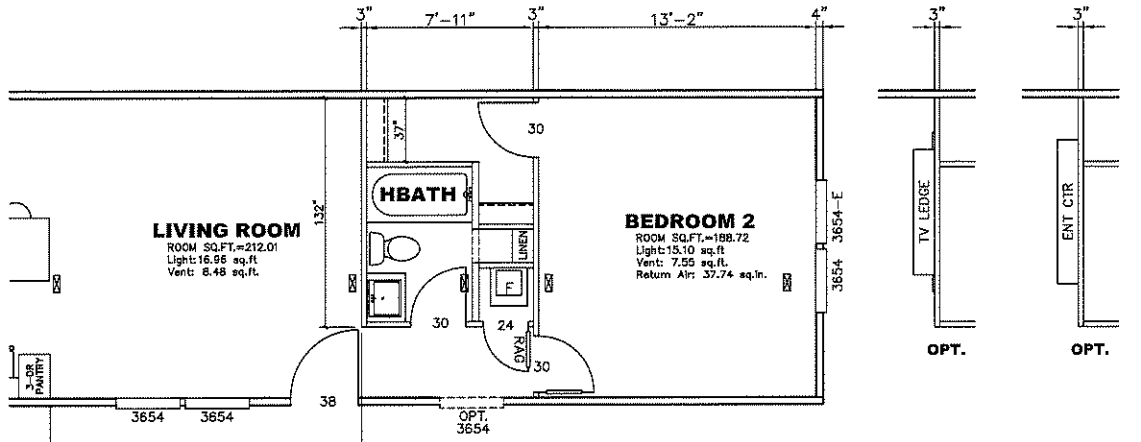
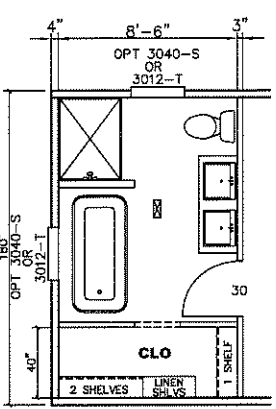
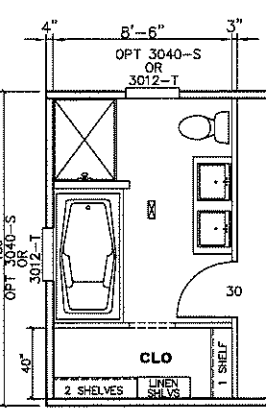
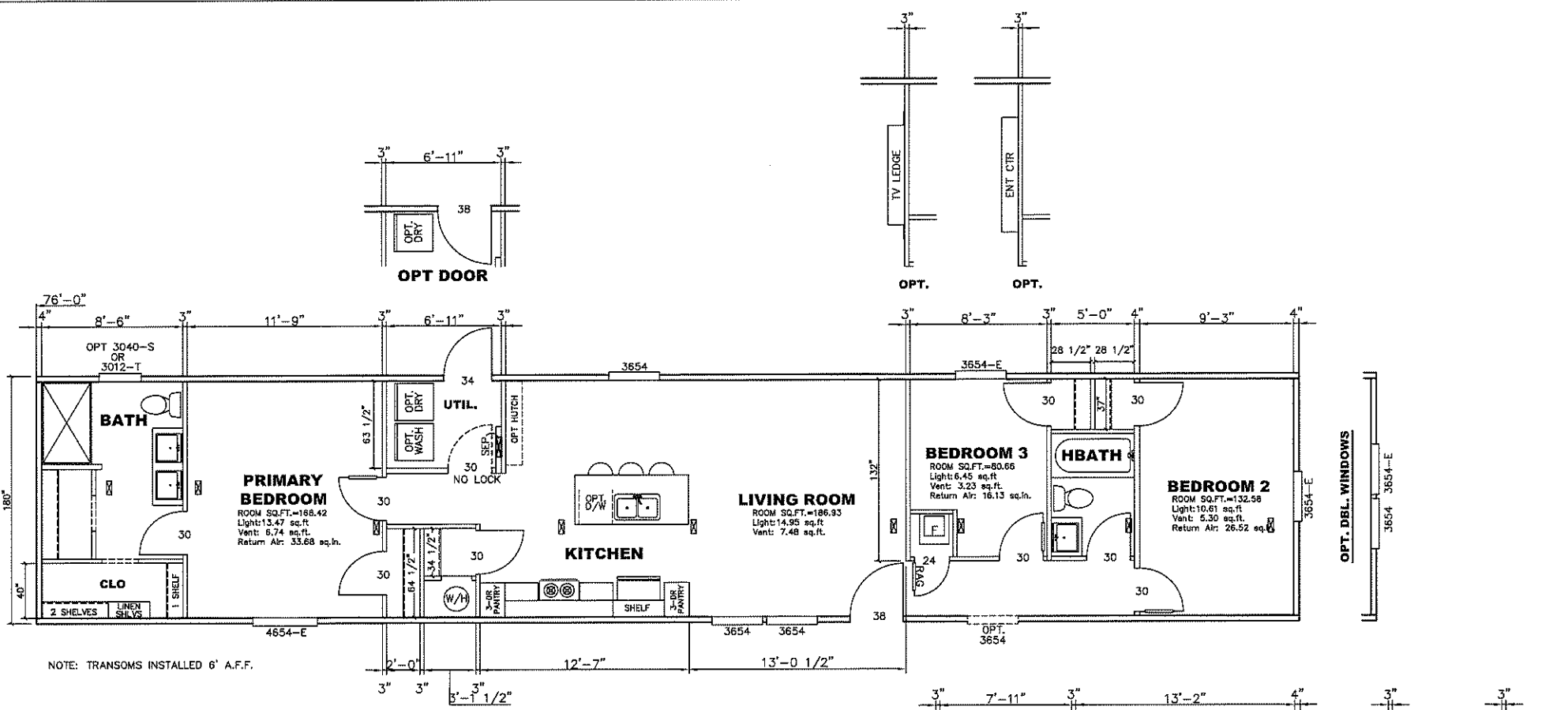
1200 SQ.FT. (STD PLAN "CONDITIONED")		N/A SQ.FT. (W/OPT. PORCH/RECESS "CONDITIONED")	
CMH MANUFACTURING	Model #: SAV16723A	Drawing #:	
Product Designer: E HARDWICK	Date: 12/1/21	Scale: NT5	375126
16 x 72 PEYTON			

80FT OPT. FLOOR PLAN OPTIONS



1080 SQ.FT. (STD PLAN "CONDITIONED")
 N/A SQ.FT. (W/OPT. PORCH/RECESS "CONDITIONED")

CMH MANUFACTURING	Model #: SAV16723A	Drawing #:
	Date: 12/1/21	Scale: NTS 375126
Product Designer: E HARDWICK		16 x 72 PEYTON
FLOOR PLAN		



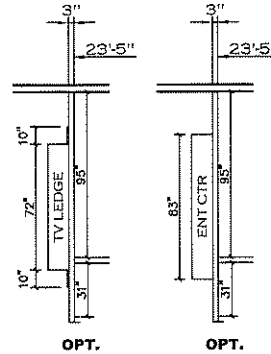
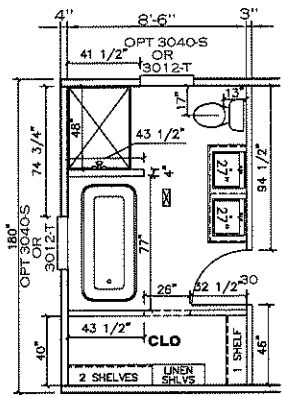
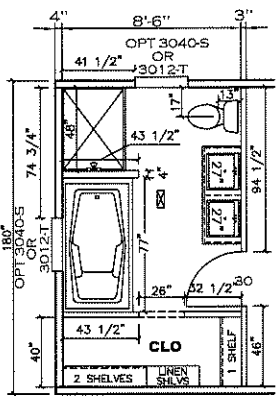
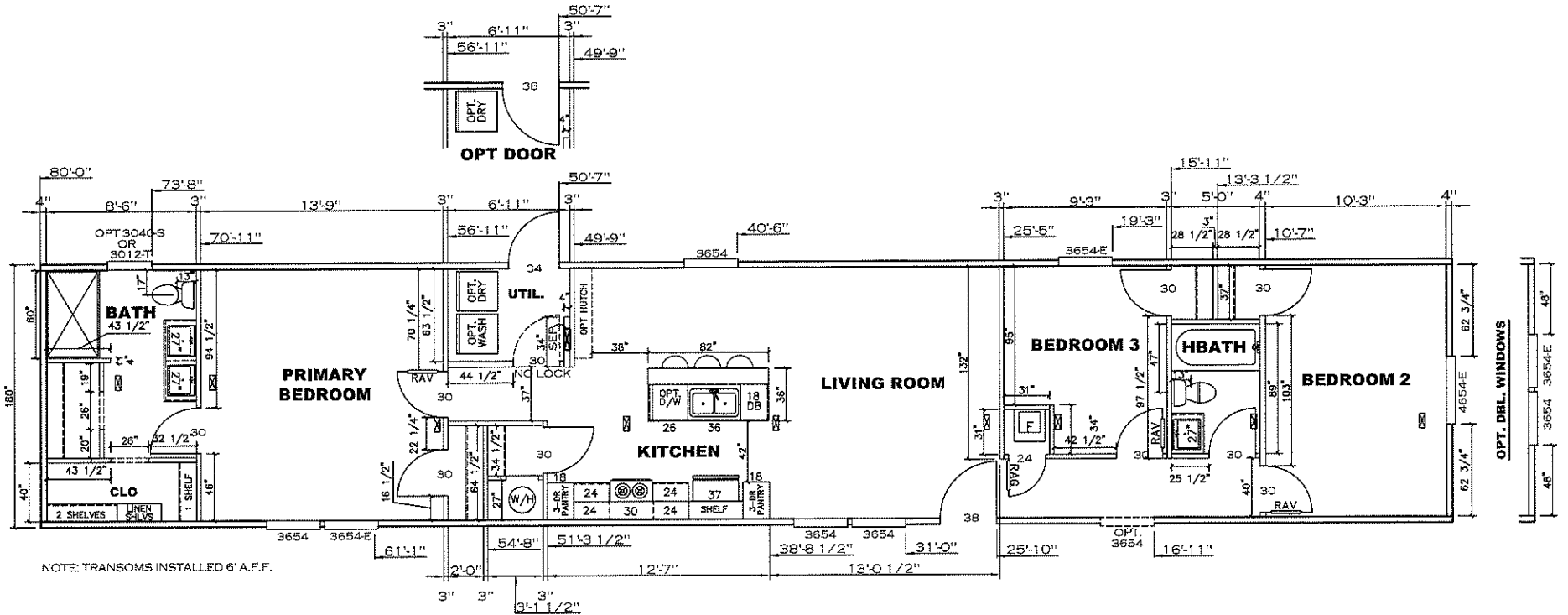
APPROVED

REVISED
08 FEB 2022
FP-16-2997

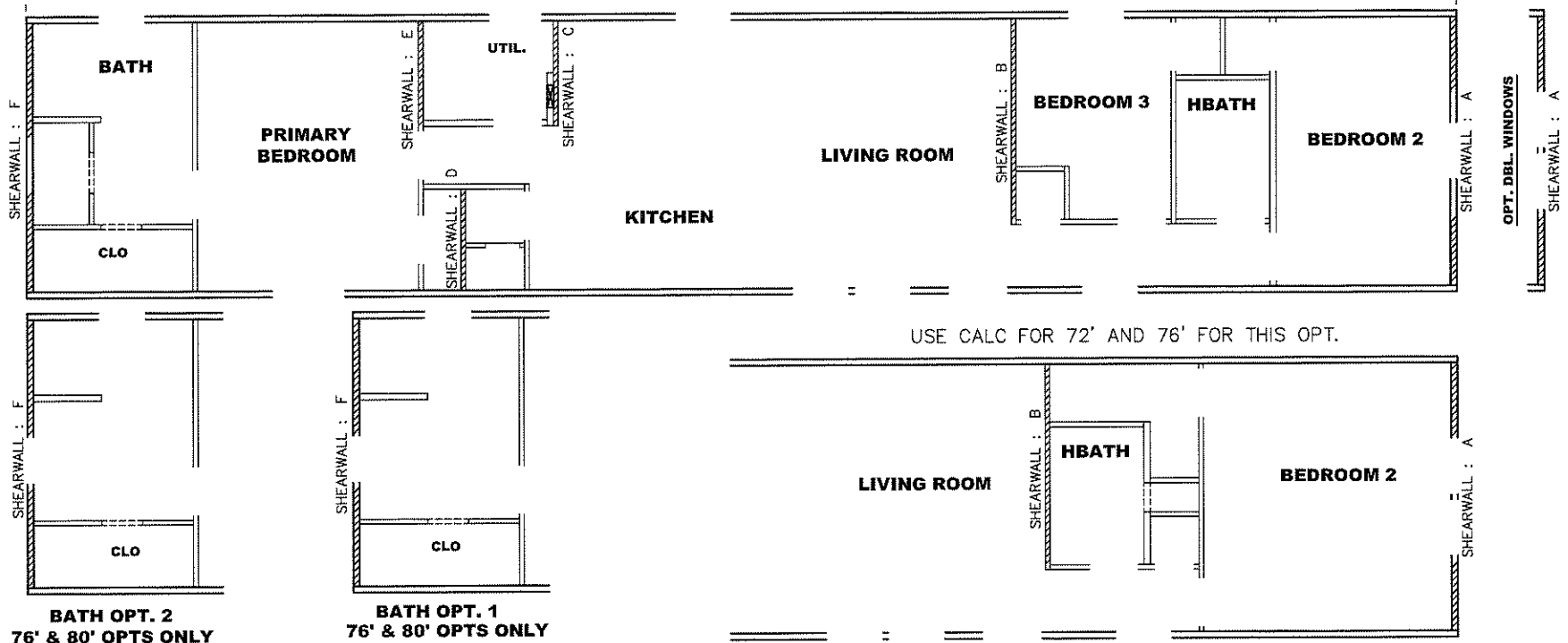
APPROVED

Federal Manufactured
Home Construction
And Safety Standards

1140 SQ.FT. (STD PLAN "CONDITIONED")		N/A SQ.FT. (W/OPT. PORCH/RECESS "CONDITIONED")	
CMH MANUFACTURING	Model #: SAV16723A	Drawing #:	
Product Designer: E HARDWICK	Date: 12/1/21	Scale: NTS	375126
76FT OPT. FLOOR PLAN OPTIONS		16 x 72 PEYTON	



1200 SQ.FT. (STD PLAN "CONDITIONED")		N/A SQ.FT. (W/OPT. PORCH/RECESS "CONDITIONED")	
CMH MANUFACTURING		Model #: SAV16723A	Drawing #:
		Date: 1/21/21	Scale: NTS 375126
Product Designer: E HARDWICK		16 x 72 PEYTON	
80FT OPT. FLOOR PLAN OPTIONS			



USE FOR 2 BDRM 76' OPT.

Model # 37S126-76FT Minimum Joist Spacing 16"
 Box Width = 180" Single wide No Offset Box
 Box Length = 76 ft. 95.5" 12" MIN. IBEAM No Clerestory
 No Skylights No Origami Dormer
 No Porches No Sunken Floor
 Joist Size = #2 spf 2x6 Lags 9Mx3" No Parapet Roof

Model # 37S126-76FT Minimum Joist Spacing 16"
 Box Width = 180" Single wide No Offset Box
 Box Length = 76 ft. 95.5" 12" MIN. IBEAM No Clerestory
 No Skylights No Origami Dormer
 No Porches No Sunken Floor
 Joist Size = #2 spf 2x6 Lags 9Mx3" No Parapet Roof

Version R13.19

Version R13.19

Wind Zone 1 Standard Roof Ceiling board only (152 pfl) Chords: 2x4 SPF Stud Top Plate & 1x3 SPF Rail. Each spliced 96 inch sidewall
 Diaphragm Construction: w/2x4 MCP.

Shearwall	Dist./ Hitch	Length	PLF	# of Joists	Lags	Notes	SW1/SW2
A	0'	96"	162	2	1/1	Split Shearwall	48/48
B	23.54'	124"	162	2	2/1		
E	55.04'	60"	324	3	1/2		
F	76'	141.5"	162	2	1/1	Split Shearwall	74.75/66.7'

Wind Zone 1 Standard Roof Ceiling board only (152 pfl) Chords: 2x4 SPF Stud Top Plate & 1x3 SPF Rail. Each spliced 96 inch sidewall
 Diaphragm Construction: w/2x4 MCP.

Shearwall	Dist./ Hitch	Length	PLF	# of Joists	Lags	Notes	SW1/SW2
A	0'	96"	162	2	1/1	Split Shearwall	48/48
B	21.79'	124"	162	2	2/1		
E	55.04'	64"	324	3	1/2		
F	76'	141.5"	162	2	1/1	Split Shearwall	74.75/66.7'

Wind Zone 2 Standard Roof (3/8" sheathing only with 15 gax 1.5" at 5'10" oc. (197 pfl) Chords: 2x4 SPF Stud Top Plate & 1x3 SPF Rail. Each spliced w/2x4 MCP. 96 inch sidewall
 Diaphragm Construction:

Shearwall	Dist./ Hitch	Length	PLF	# of Joists	Lags	Notes	SW1/SW2
A	0'	96"	425	6	2/2	Split Shearwall	48/48
B	23.54'	120"	425	3	4/1		
D	52.79'	60"	515	8	2/2		
E	55.04'	68"	324	4	1/2		
F	76'	141.5"	162	2	2/2	Split Shearwall	74.75/66.7'

Wind Zone 2 Standard Roof (3/8" sheathing only with 15 gax 1.5" at 5'10" oc. (197 pfl) Chords: 2x4 SPF Stud Top Plate & 1x3 SPF Rail. Each spliced w/2x4 MCP. 96 inch sidewall
 Diaphragm Construction:

Shearwall	Dist./ Hitch	Length	PLF	# of Joists	Lags	Notes	SW1/SW2
A	0'	96"	425	6	2/2	Split Shearwall	48/48
B	21.79'	120"	425	3	4/1		
D	52.79'	64"	515	8	2/2		
E	55.04'	68"	324	4	1/2		
F	76'	141.5"	162	2	2/2	Split Shearwall	74.75/66.7'

Wind Zone 3 Standard Roof (3/8" sheathing only with 15 gax 1.5" at 5'10" oc. (197 pfl) Chords: 2x4 SPF Stud Top Plate & 1x3 SPF Rail. Each spliced w/2x4 MCP. 96 inch sidewall
 Diaphragm Construction:

Shearwall	Dist./ Hitch	Length	PLF	# of Joists	Lags	Notes	SW1/SW2
A	0'	96"	425	6	2/2	Split Shearwall	48/48
B	23.54'	128"	425	3	4/1		
C	47.87'	67.5"	515	8	2/2		0.74
D	52.79'	52"	162	2	1/1		
E	55.04'	64"	425	5	2/2		
F	76'	141.5"	425	6	4/4	Split Shearwall	74.75/66.7'

Wind Zone 3 Standard Roof (3/8" sheathing only with 15 gax 1.5" at 5'10" oc. (197 pfl) Chords: 2x4 SPF Stud Top Plate & 1x3 SPF Rail. Each spliced w/2x4 MCP. 96 inch sidewall
 Diaphragm Construction:

Shearwall	Dist./ Hitch	Length	PLF	# of Joists	Lags	Notes	SW1/SW2
A	0'	96"	425	6	2/2	Split Shearwall	48/48
B	21.79'	128"	425	3	4/1		
C	47.87'	67.5"	515	8	2/2		0.74
D	52.79'	52"	162	2	1/1		
E	55.04'	64"	425	5	2/2		
F	76'	141.5"	425	6	4/4	Split Shearwall	74.75/66.7'

Wind Zone 1 Standard Roof (3/8" sheathing only with 15 gax 1.5" at 5'10" oc. (197 pfl) Chords: 2x4 SPF Stud Top Plate spliced w/ 12" glue block & 1x3 SPF Rail. 96 inch sidewall
 Diaphragm Construction:

Shearwall	Dist./ Hitch	Length	PLF	# of Joists	Lags	Notes	SW1/SW2
A	0'	96"	425	6	3/3	Split Shearwall	48/48
F	76'	141.5"	425	6	4/4	Split Shearwall	74.75/66.7'

Wind Zone 1 Standard Roof (3/8" sheathing only with 15 gax 1.5" at 5'10" oc. (197 pfl) Chords: 2x4 SPF Stud Top Plate spliced w/ 12" glue block & 1x3 SPF Rail. 96 inch sidewall
 Diaphragm Construction:

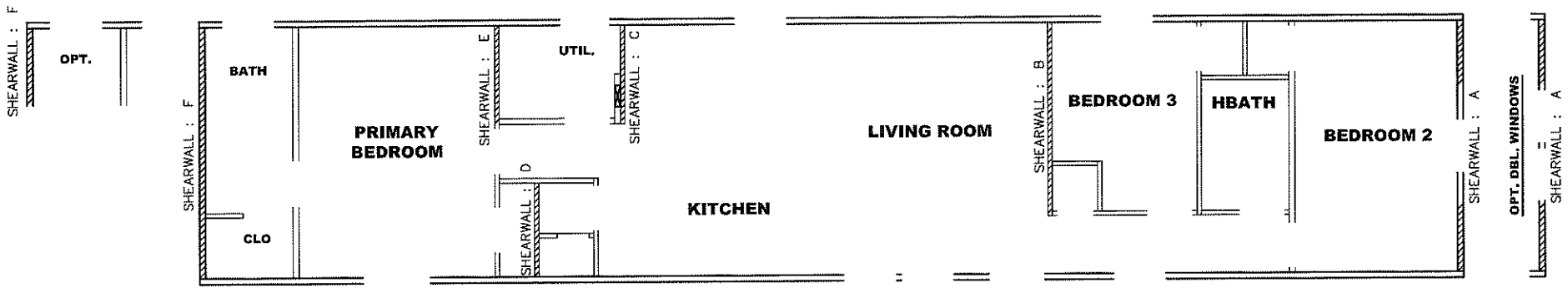
Shearwall	Dist./ Hitch	Length	PLF	# of Joists	Lags	Notes	SW1/SW2
A	0'	96"	425	6	3/3	Split Shearwall	48/48
F	76'	141.5"	425	6	4/4	Split Shearwall	74.75/66.7'

APPROVED **IWG** **APPROVED**
 REVISED
 08 FEB 2022
 FP-16-2997
 Federal Manufactured Home Construction And Safety Standards

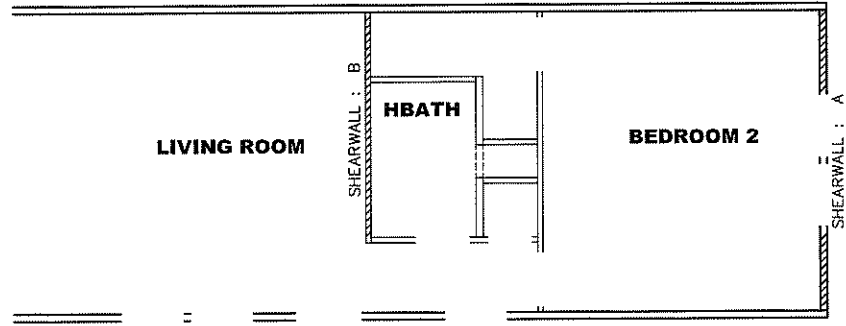
1140 SQ.FT. (STD PLAN "CONDITIONED")
 N/A SQ.FT. (W/OPT. PORCH/RECESS "CONDITIONED")

CMH MANUFACTURING	Model #: SAV16723A	Drawing #:
	Date: 1/21/21	Scale: NTS
Product Designer: E HARDWICK	16 x 72 PEYTON	

76FT OPT. SHEARWALL OPT



USE CALC FOR 72' AND 76' FOR THIS OPT.



USE FOR 2 BDRM 72' OPT.

2 BEDROOM OPT
72' & 76' ONLY

Model # 37S126 Minimum Joist Spacing 16"
 Box Width = 180" Single wide No Offset Box
 Box Length = 72 ft. 95.5" 12" MIN.IBEAM No Clerestory
 No Skylights No Origami Dormer
 No Porches No Sunken Floor
 Joist Size = #2 spf 2x6 Lags 9Mx3" No Parapet Roof

Model # 37S126 Minimum Joist Spacing 16"
 Box Width = 180" Single wide No Offset Box
 Box Length = 72 ft. 95.5" 12" MIN.IBEAM No Clerestory
 No Skylights No Origami Dormer
 No Porches No Sunken Floor
 Joist Size = #2 spf 2x6 Lags 9Mx3" No Parapet Roof

Version R13.19

Version R13.19

Wind Zone 1 Standard Roof Ceiling board only (152 plf) Chords: 2x4 SPF Stud Top Plate & 1x3 SPF Rail, Each spliced w/2x4 MCP 96 inch sidewall
 Diaphragm Construction:

Shearwall	Dist./ Hitch	Length	PLF	# of Joists	Lags	Notes	SW1/SW2
A	0'	96"	162	2	1/1	Split Shearwall	48/48
B	23.54'	124"	162	2	2/1		
E	55.04'	56"	324	3	1/2		
F	72'	40"	162	2	1/1		

Wind Zone 1 Standard Roof Ceiling board only (152 plf) Chords: 2x4 SPF Stud Top Plate & 1x3 SPF Rail, Each spliced w/2x4 MCP 96 inch sidewall
 Diaphragm Construction:

Shearwall	Dist./ Hitch	Length	PLF	# of Joists	Lags	Notes	SW1/SW2
A	0'	96"	162	2	1/1	Split Shearwall	48/48
B	21.79'	124"	162	2	2/1		
E	55.04'	56"	324	3	1/2		
F	72'	40"	162	2	1/1		

Wind Zone 2 Standard Roof (3/8" sheathing only with 15 gax 1.5" at 5'10" oc. (197 plf) Chords: 2x4 SPF Stud Top Plate & 1x3 SPF Rail, Each spliced w/2x4 MCP 96 inch sidewall
 Diaphragm Construction:

Shearwall	Dist./ Hitch	Length	PLF	# of Joists	Lags	Notes	SW1/SW2
A	0'	96"	425	6	2/2	Split Shearwall	48/48
B	23.54'	120"	425	3	4/1		
D	52.79'	60"	515	8	2/2		
E	55.04'	56"	324	3	1/2		
F	72'	100"	162	2	1/1		

Wind Zone 2 Standard Roof (3/8" sheathing only with 15 gax 1.5" at 5'10" oc. (197 plf) Chords: 2x4 SPF Stud Top Plate & 1x3 SPF Rail, Each spliced w/2x4 MCP 96 inch sidewall
 Diaphragm Construction:

Shearwall	Dist./ Hitch	Length	PLF	# of Joists	Lags	Notes	SW1/SW2
A	0'	96"	425	6	2/2	Split Shearwall	48/48
B	21.79'	120"	425	3	4/1		
D	52.79'	64"	515	8	2/2		
E	55.04'	56"	324	3	1/2		
F	72'	100"	162	2	1/1		

Wind Zone 3 Standard Roof (3/8" sheathing only with 15 gax 1.5" at 5'10" oc. (197 plf) Chords: 2x4 SPF Stud Top Plate & 1x3 SPF Rail, Each spliced w/2x4 MCP 96 inch sidewall
 Diaphragm Construction:

Shearwall	Dist./ Hitch	Length	PLF	# of Joists	Lags	Notes	SW1/SW2
A	0'	96"	425	6	2/2	Split Shearwall	48/48
B	23.54'	128"	425	3	4/1		
C	47.87'	67.5"	515	8	2/2		0.74
D	52.79'	52"	162	2	1/1		
E	55.04'	68"	324	4	1/2		
F	72'	120"	162	2	2/1		

Wind Zone 3 Standard Roof (3/8" sheathing only with 15 gax 1.5" at 5'10" oc. (197 plf) Chords: 2x4 SPF Stud Top Plate & 1x3 SPF Rail, Each spliced w/2x4 MCP 96 inch sidewall
 Diaphragm Construction:

Shearwall	Dist./ Hitch	Length	PLF	# of Joists	Lags	Notes	SW1/SW2
A	0'	96"	425	6	2/2	Split Shearwall	48/48
B	21.79'	128"	425	3	4/1		
C	47.87'	67.5"	515	8	2/2		0.74
D	52.79'	52"	162	2	1/1		
E	55.04'	68"	324	4	1/2		
F	72'	120"	162	2	2/1		

Wind Zone 1 Standard Roof (3/8" sheathing only with 15 gax 1.5" at 5'10" oc. (197 plf) Chords: 2x4 SPF #3 Top Plate spliced w/2x4 MCP & 1x3 SPF Rail spliced w/ 96 inch sidewall
 Diaphragm Construction:

Shearwall	Dist./ Hitch	Length	PLF	# of Joists	Lags	Notes	SW1/SW2
A	0'	96"	425	6	2/2	Split Shearwall	48/48
F	72'	160"	162	2	2/1		

Wind Zone 1 Standard Roof (3/8" sheathing only with 15 gax 1.5" at 5'10" oc. (197 plf) Chords: 2x4 SPF #3 Top Plate spliced w/2x4 MCP & 1x3 SPF Rail spliced w/ 96 inch sidewall
 Diaphragm Construction:

Shearwall	Dist./ Hitch	Length	PLF	# of Joists	Lags	Notes	SW1/SW2
A	0'	96"	425	6	2/2	Split Shearwall	48/48
F	72'	160"	162	2	2/1		

APPROVED

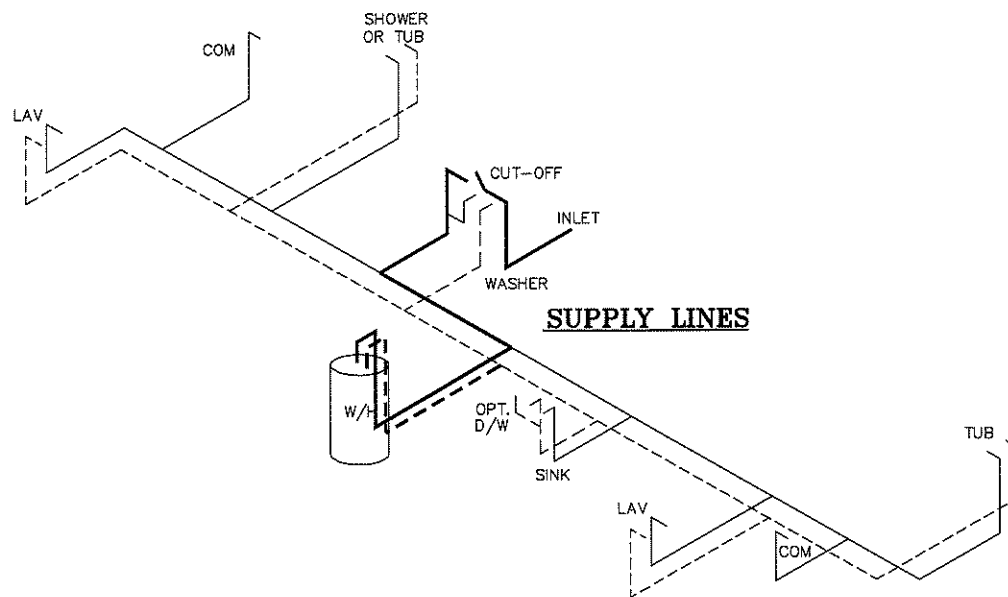
APPROVED

REVISED
 08 FEB 2022
 FP-16-2997
 Federal Manufactured
 Home Construction
 And Safety Standards

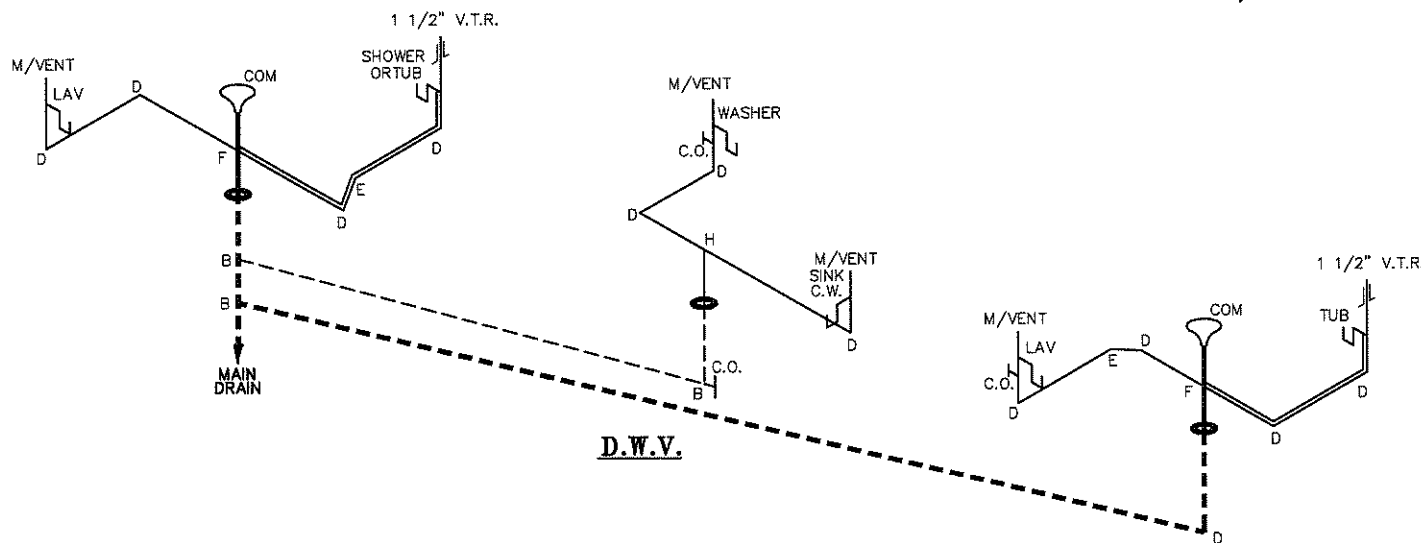
1080 SQ.FT. (STD PLAN "CONDITIONED")
 N/A SQ.FT. (W/OPT. PORCH/RECESS "CONDITIONED")

CMH MANUFACTURING	Model #: SAV16723A	Drawing #:
	Date: 1/21/21	Scale: NTS
Product Designer: E HARDWICK		16 x 72 PEYTON
SHEARWALL PAGE		

NOTE:
 DASHED LINES INDICATES HOT WATER
 SOLID LINES INDICATES COLD WATER
 ——— = 3/4"
 ——— = 1/2"



SUPPLY LINES



D.W.V.

APPROVED **HWC** **APPROVED**
 21 DEC 2021
 FP-16-2997
 Federal Manufactured
 Home Construction
 And Safety Standards

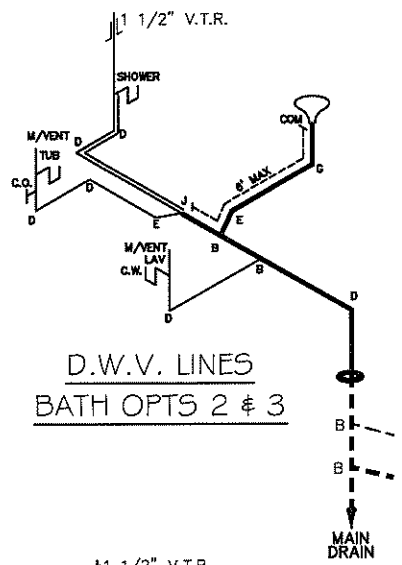
LEGEND	
A	SHORT TURN T-Y
B	LONG TURN T-Y
C	1/4 BEND
D	LONG SWEEP 1/4 BEND
E	45 ELL
F	DBL. SANITARY TEE
G	4x3 CLOSET ELL
H	DOUBLE ELL
I	22 1/2° ELL
J	45° Y
K	LONG TURN STREET ELBOW
L	45 FTG ELL

D.W.V. LINE SIZE CHART	
—————	= 3"
—————	= 2"
—————	= 1 1/2"

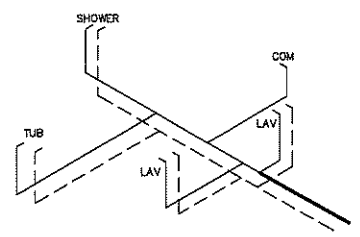
1080 SQ.FT. (STD PLAN "CONDITIONED")
 N/A SQ.FT. (W/OPT. PORCH/RECESS "CONDITIONED")

CMH MANUFACTURING	Model #: SAV16723A	Drawing #:
	Date: 12/1/21	Scale: NTS
Product Designer: E HARDWICK		16 x 72 PEYTON
D.W.V. and Supply Lines		

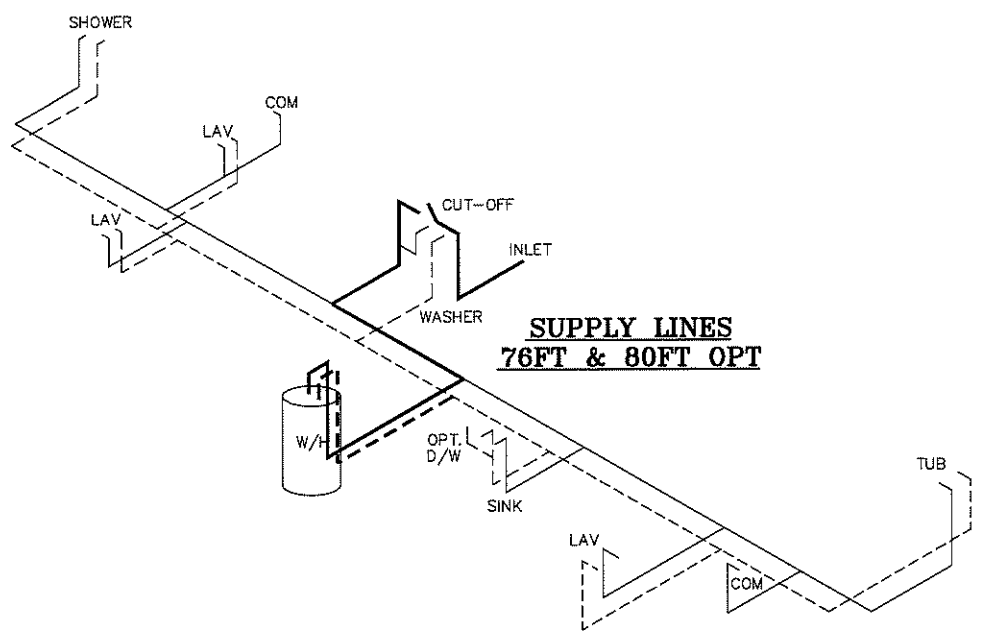
NOTE:
 DASHED LINES INDICATES HOT WATER
 SOLID LINES INDICATES COLD WATER
 ——— = 3/4"
 ——— = 1/2"



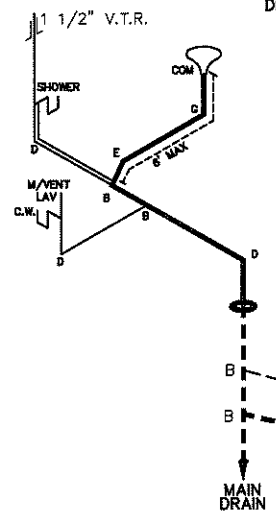
D.W.V. LINES
BATH OPTS 2 & 3



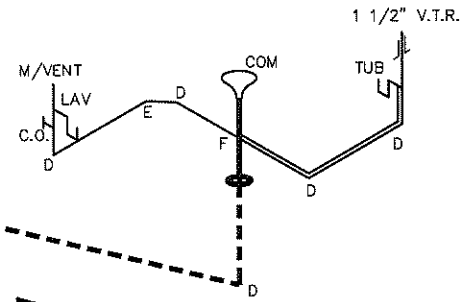
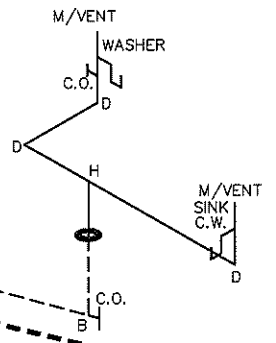
SUPPLY LINES
BATH OPTS 2 & 3



SUPPLY LINES
76FT & 80FT OPT



D.W.V.
76FT & 80FT OPT



LEGEND	
A	SHORT TURN T-Y
B	LONG TURN T-Y
C	1/4 BEND
D	LONG SWEEP 1/4 BEND
E	45 ELL
F	DBL SANITARY TEE
G	4x3 CLOSET ELL
H	DOUBLE ELL
I	22 1/2" ELL
J	45 Y
K	LONG TURN STREET ELBOW
L	45 FIG ELL

DWV LINE SIZE CHART	
———	= 3"
———	= 2"
———	= 1 1/2"

APPROVED **HWG** **APPROVED**
 21 DEC 2021
 FP-16-2997
 Federal Manufactured
 Home Construction
 And Safety Standards

1140 SQ.FT. (STD PLAN "CONDITIONED")		N/A SQ.FT. (W/OPT. PORCH/RECESS "CONDITIONED")	
CMH MANUFACTURING	Model #: 5AV16723A	Drawing #:	
	Date: 12/1/21	Scale: NTS	375126
Product Designer: E HARDWICK		16 x 72 PEYTON	
Opt. DWV & Supply Lines			

CMH MANUFACTURING, INC.
 Home Office
 5000 Clayton Road, Maryville, TN 37804
 PH: 865.380.3000 FAX: 865.380.3781

APPROVAL STAMP

TITLE

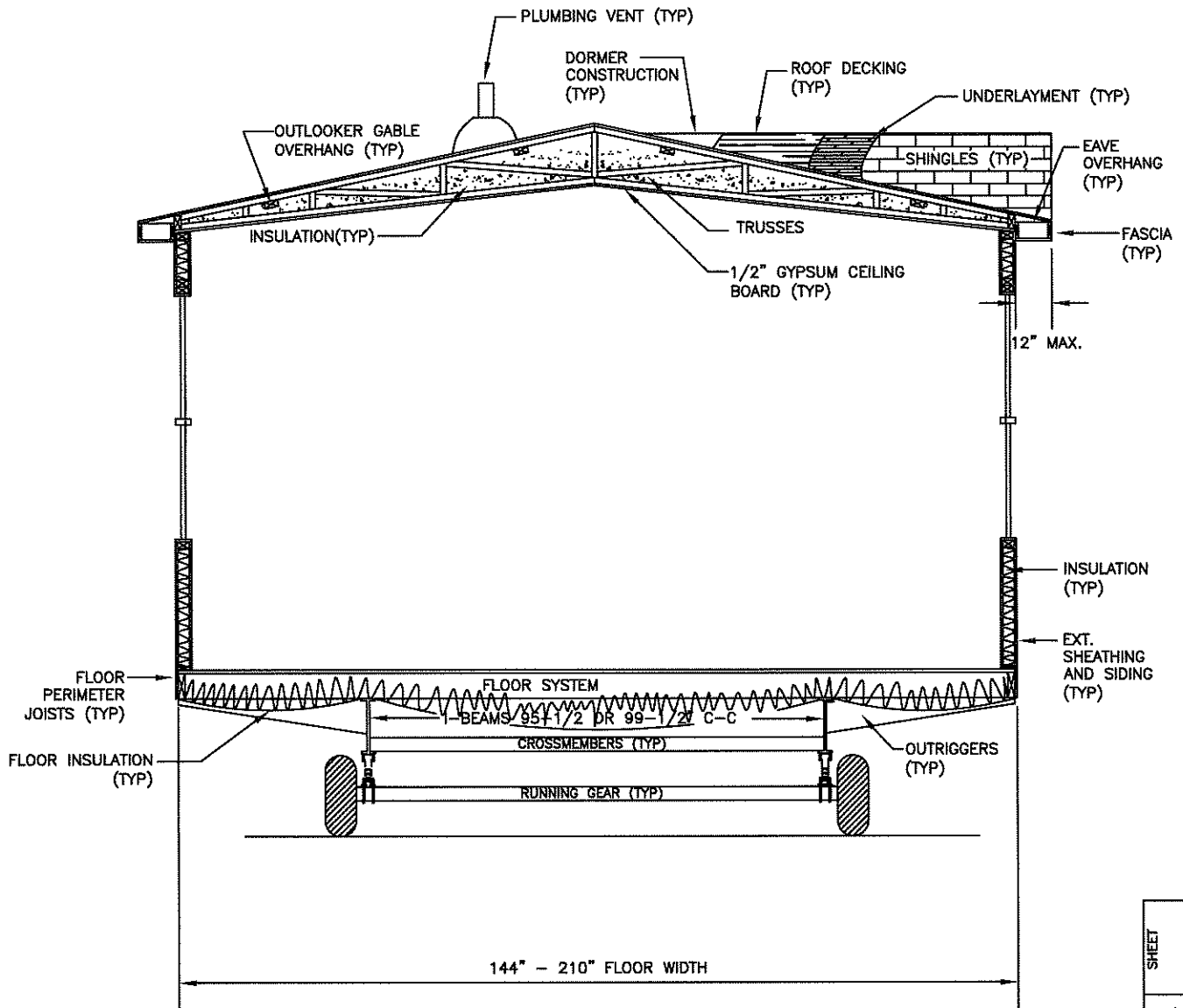
SINGLE WIDE
 CROSS-SECTION

BY
 JGM

DATE
 12/03/14

CHECKED

DATE



144" - 210" FLOOR WIDTH

CROSS-SECTION^{NTS}

SHEET

REV

DWG NO. XS-1.02