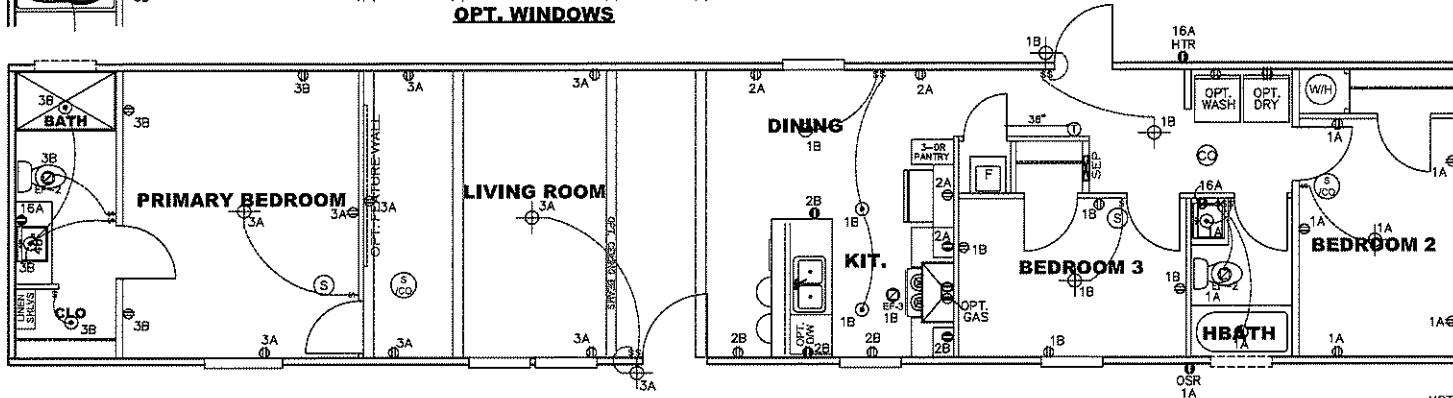
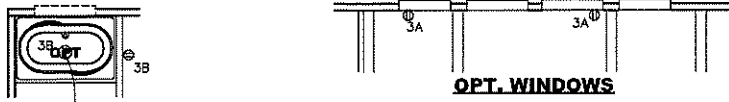
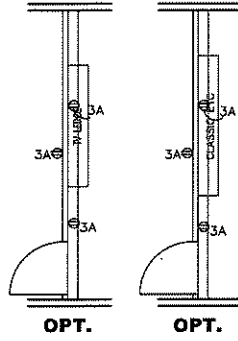
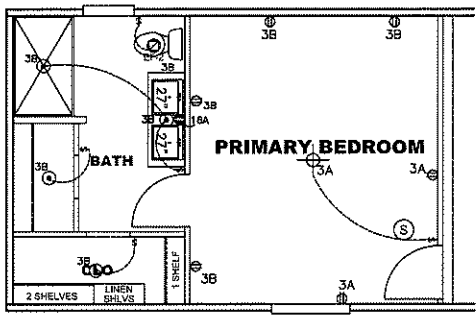


CIRCUIT	CIRCUIT #	WIRE	BREAKER	CIRCUIT	CIRCUIT #	WIRE	BREAKER	CIRCUIT	CIRCUIT #	WIRE	BREAKER
LIGHT/RECEP	1A, 1B, 3A, 3B	14-2	15-SP	WATER HEATER	4A, 6B		SEE NOTE #8	BATHROOM	16A	12-2	20-SP
KITCHEN/DINING	2A, 2B	12-2	20-SP	RANGE	5B, 7A		SEE NOTE #8	OPT G/D/SP	9B		SEE NOTE #8
WASHER	12A	12-2	20-SP	OPT GAS RANGE	15B		SEE NOTE #8	OPT SP3	11A, B		SEE NOTE #8
DRYER	5A, 7B		SEE NOTE #8	FURNACE	6A, 8A, B, 10A, B		SEE NOTE #8	FREEZER	N/A		SEE NOTE #8
				OPT DWASH	9A		SEE NOTE #8				
				SMOKE ALARM	4B		SEE NOTE #8				

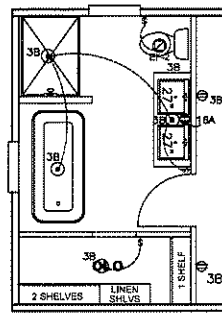


NOTES:

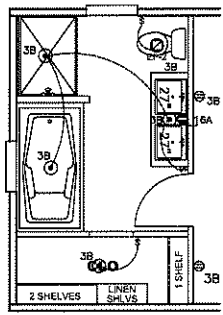
1. ALL CIRCUITS SHOWN ARE FOR REFERENCE AND MAY BE CHANGED BASED ON OPTIONAL COMPONENTS INSTALLED IN THE HOME.
2. REFER TO DAPIA MANUAL FOR SYMBOL CHART.
3. EITHER LIGHT OR RECEPTACLE MUST CONNECT TO SWITCH.
4. EF-1= 50 CFM EXHAUST FAN REQUIRED FOR THERMAL ZONE III THERMAL ZONES I & II MAY USE FAN OR WINDOW W/1.5 SQ. FT. OPENABLE GLASS.
5. EF-2= 60 CFM EXHAUST FAN REQUIRED THERMAL ZONE I, II, AND III.
6. EF-3= 100 CFM RANGE EXHAUST FAN, SWITCH AT HOOD.
7. EF-4= WHOLE HOUSE VENTILATION REQUIREMENTS PER DAPIA MANUAL.
8. REFER TO DAPIA MANUAL OR THE MFG. INSTALLATION INSTRUCTIONS FOR PROPER WIRE SIZE AND BREAKER SIZE FOR SPECIFIC APPLIANCE AND MODEL BEING INSTALLED.
9. ALL SMOKE ALARMS TO BE LOCATED ON THE CEILING.
10. CARBON MONOXIDE ALARMS ARE ONLY REQUIRED WHEN HOME HAS EITHER FUEL BURNING APPLIANCES, IS GARAGE READY OR IS BASEMENT READY. REFERENCE DAPIA MANUAL FOR ADDITIONAL INFORMATION.
11. DIMENSIONS SHOWN ON PRINT ARE APPROXIMATE AND TO BE USED ONLY AS A GUIDELINE.



BATH OPT. 1  
76' OPT



BATH OPT. 2  
76' OPT

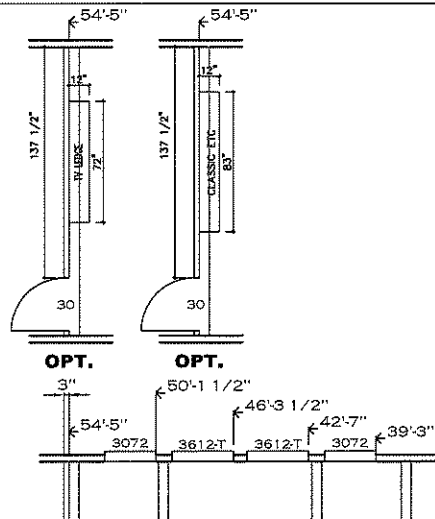


BATH OPT. 3  
76' OPT

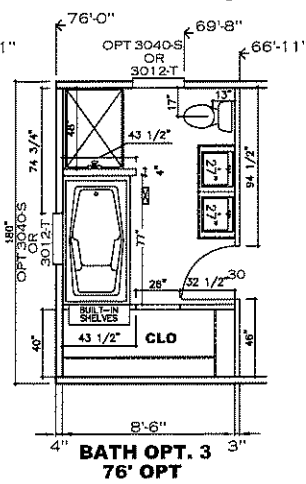
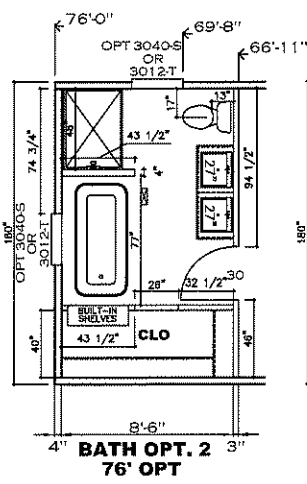
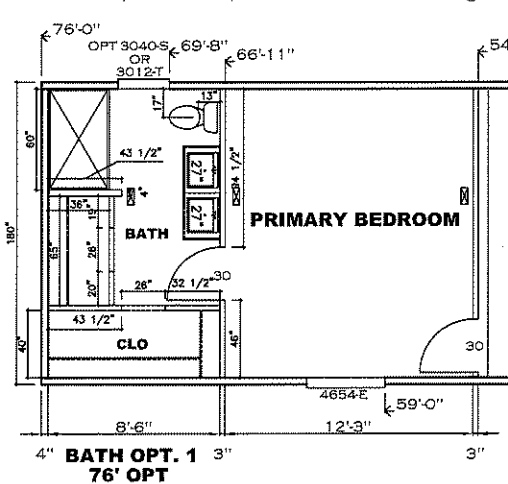
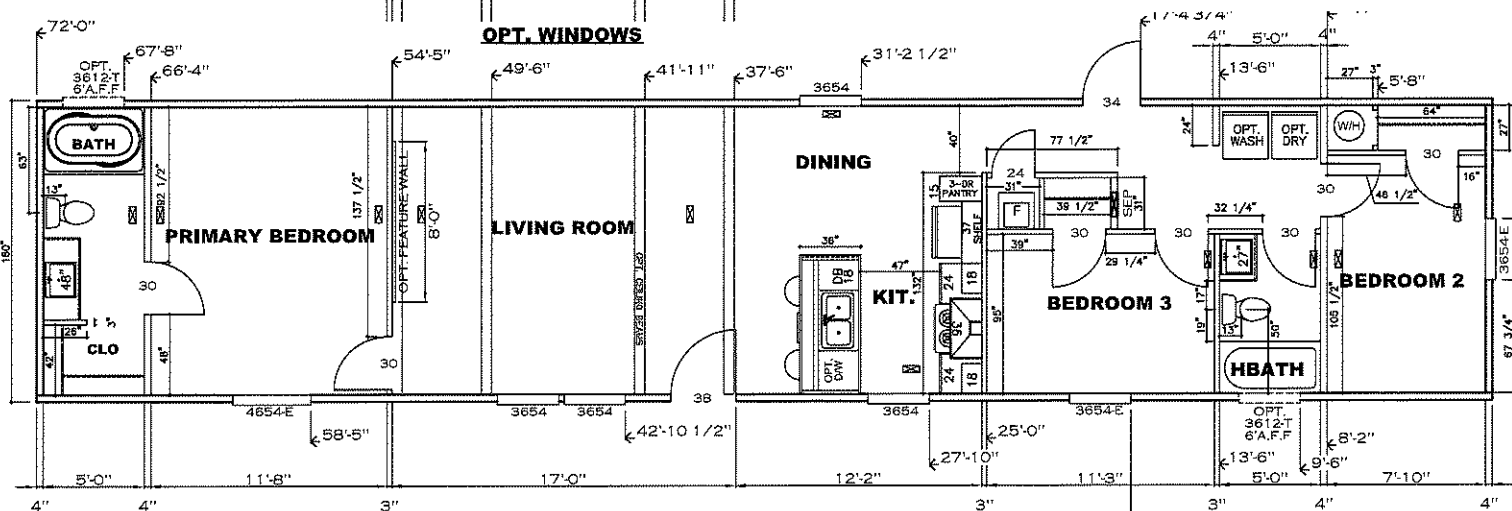
**APPROVED** **RWC** **APPROVED**  
 REVISED  
 05 JAN 2022  
 FP-16-2993  
 Federal Manufactured  
 Home Construction  
 And Safety Standards

1080/1140 SQ.FT. (STD PLAN "CONDITIONED")  
 N/A SQ.FT. (W/OPT. PORCH/RECESS "CONDITIONED")

CMH MANUFACTURING	Model #: GRA16723A	Drawing #:
	Date: 10/27/21	Scale: N.F.S. 375124
Product Designer: E HARDWICK		16 X 72/76 Grand Living
<b>ELECTRICAL PLAN-06</b>		

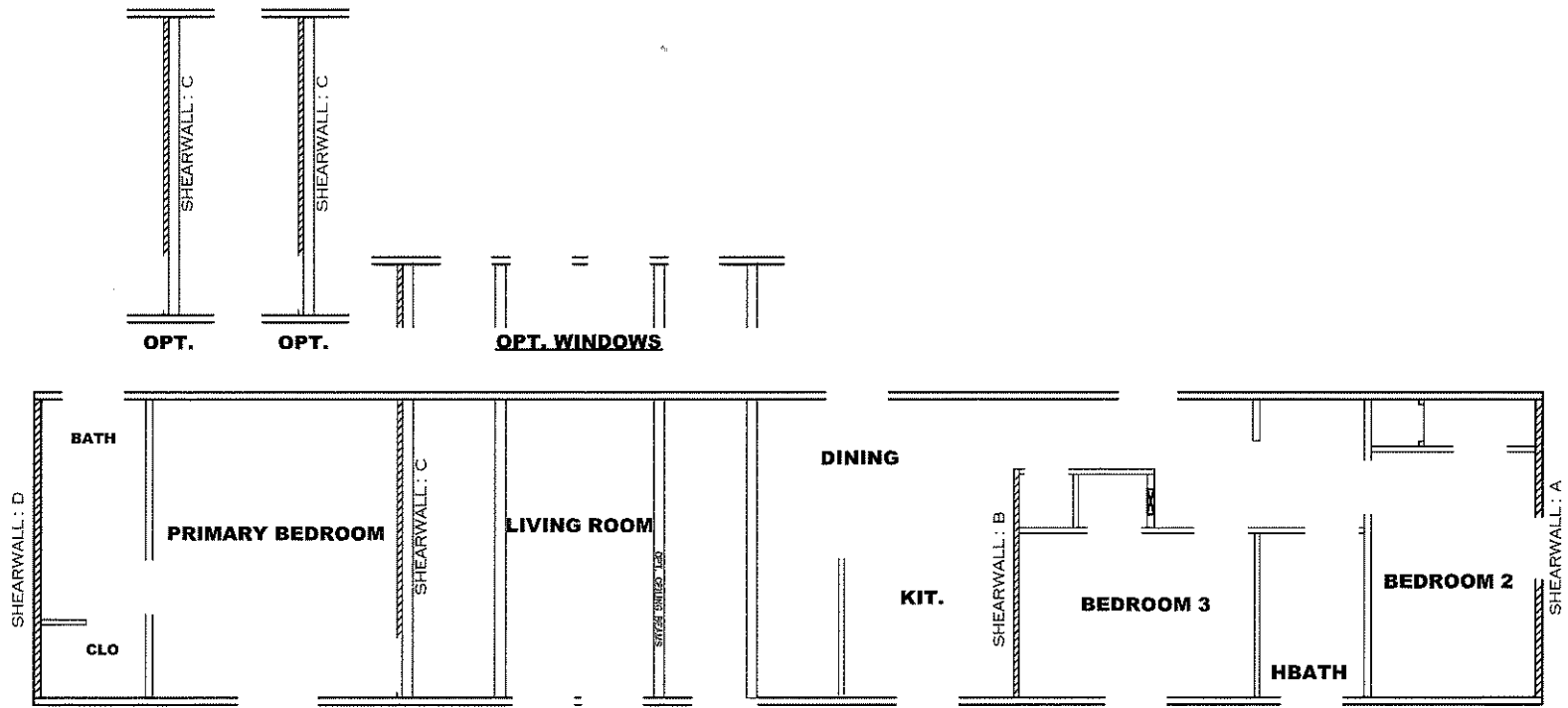


**OPT. WINDOWS**



1080/1140 SQ.FT. (STD PLAN "CONDITIONED")  
 N/A SQ.FT. (W/OPT. PORCH/RECESS "CONDITIONED")

<b>CMH</b> MANUFACTURING	Model #: GRA16723A	Drawing #:
	Date: 1/02/7/21	Scale: N.T.S. 375124
Product Designer: E HARDWICK		16 X 72/76 Grand Living
<b>FLOOR PLAN</b>		



**Model # 37S124** Minimum Joist Spacing 16 "

Box Width = 180 " Single wide No Offset Box  
 Box Length = 72 ft. 95.5" 12" MIN. IBEAM No Clerestory  
 No Skylights No Origami Dormer  
 No Porches No Sunken Floor  
 Joist Size = #2 spf 2x6 Lags 9Mx3" No Parapet Roof

**Version R13.19**

**Wind Zone 1 Standard Roof** Ceiling board only [152 plf] Chords: 2x4 SPF Stud Top Plate & 1x3 SPF Rail. Each spliced 96 inch sidewall  
 Diaphragm Construction: w/2x4 MCP.

Shearwall	Dist./ Hitch	Length	PLF	# of Joists	Lags	Notes	SW1/SW2
A	0'	135.5"	162	2	1/1	Split Shearwall	67.75/67.75
B	25.13'	124"	162	2	2/1		
C	54.55'	108"	162	2	1/1		
D	72.01'	40"	162	2	1/1		

**Wind Zone 2 Standard Roof** (3/8" sheathing only with 15 gax 1.5" at 5'10" oc. (197 plf) Chords: 2x4 SPF Stud Top Plate & 1x3 SPF Rail. Each spliced w/2x4 MCP. 96 inch sidewall

Shearwall	Dist./ Hitch	Length	PLF	# of Joists	Lags	Notes	SW1/SW2
A	0'	135.5"	425	6	4/4	Split Shearwall	67.75/67.75
B	25.13'	124"	425	3	4/1		
C	54.55'	136"	324	2	3/1		
D	72.01'	104"	162	2	2/1		

**Wind Zone 3 Standard Roof** (3/8" sheathing only with 15 gax 1.5" at 5'10" oc. (197 plf) Chords: 2x4 SPF Stud Top Plate & 1x3 SPF Rail. Each spliced w/2x4 MCP. 96 inch sidewall

Shearwall	Dist./ Hitch	Length	PLF	# of Joists	Lags	Notes	SW1/SW2
A	0'	135.5"	425	6	4/4	Split Shearwall	67.75/67.75
B	25.13'	120"	515	4	5/2		
C	54.55'	136"	425	2	4/2		
D	72.01'	124"	162	2	2/1		

**Wind Zone 1 Standard Roof** (3/8" sheathing only with 15 gax 1.5" at 5'10" oc. (197 plf) Chords: 2x4 SPF #3 Top Plate spliced w/ 2x4 MCP & 1x6 SPF Rail spliced w/ 96 inch sidewall

Shearwall	Dist./ Hitch	Length	PLF	# of Joists	Lags	Notes	SW1/SW2
A	0'	135.5"	425	6	4/4	Split Shearwall	67.75/67.75
D	72'	160"	162	2	2/1		

**APPROVED**

**BWG**

**APPROVED**

15 NOV 2021  
 FP-16-2993  
 Federal Manufactured  
 Home Construction  
 And Safety Standards

1080/1140 SQ.FT. (STD PLAN "CONDITIONED")  
 N/A SQ.FT. (W/OPT. PORCH/RECESS "CONDITIONED")

<b>CMH</b> MANUFACTURING	Model #: GRA16723A	Drawing #:
	Date: 10/27/21	Scale: N.T.S. 37S124
Product Designer: E HARDWICK		16 X 72/76 Grand Living
<b>SHEARWALL PAGE</b>		

CMH MANUFACTURING, INC.

Home Office  
5000 Clayton Road, Maryville, TN 37804  
PH: 865.380.3000 FAX: 865.380.3781

APPROVAL STAMP

TITLE

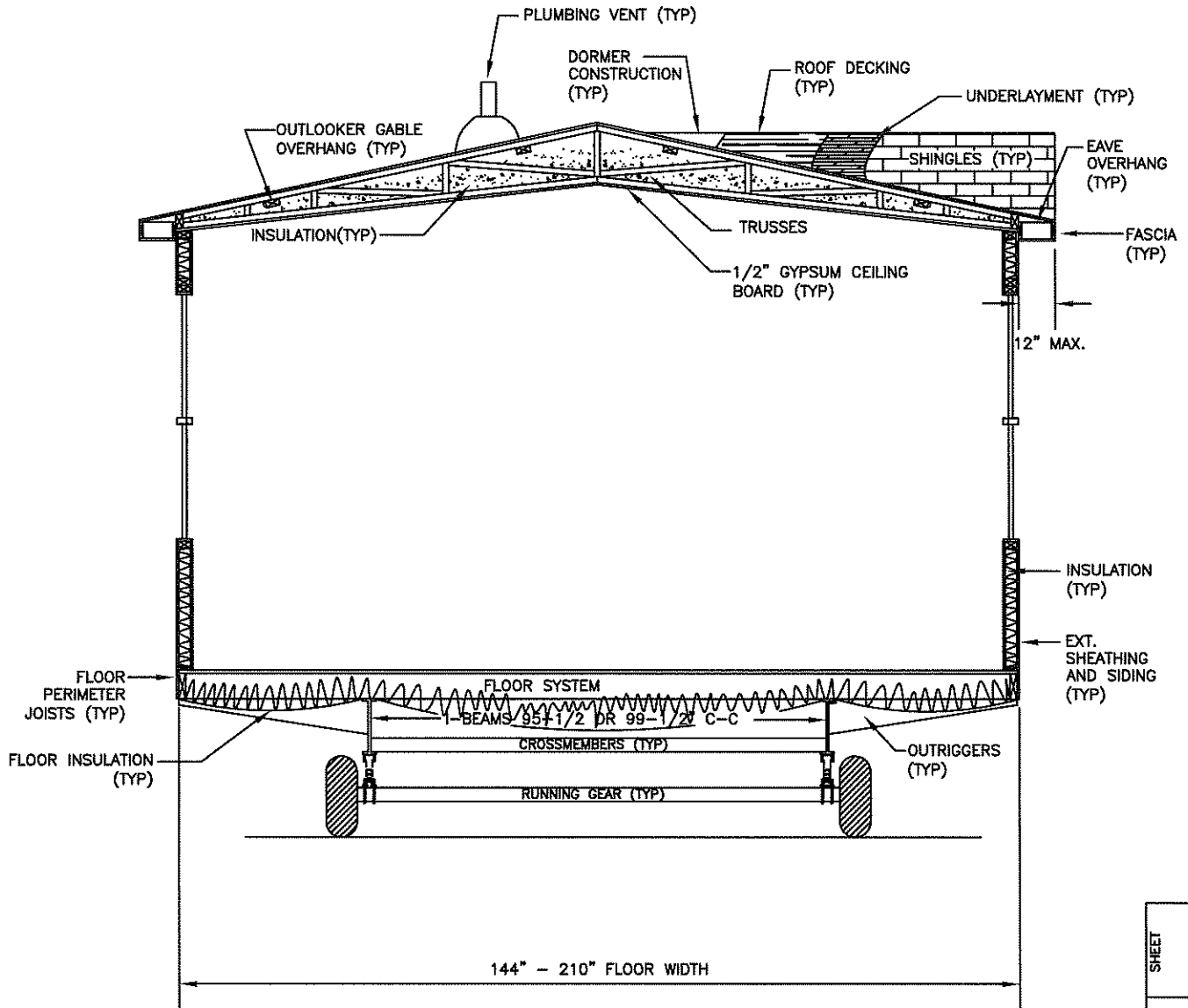
SINGLE WIDE  
CROSS-SECTION

BY  
JGM

DATE  
12/03/14

CHECKED

DATE



CROSS-SECTION<sup>NTS</sup>

SHEET

REV

XS-1.02

DWG NO.