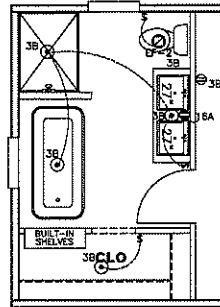
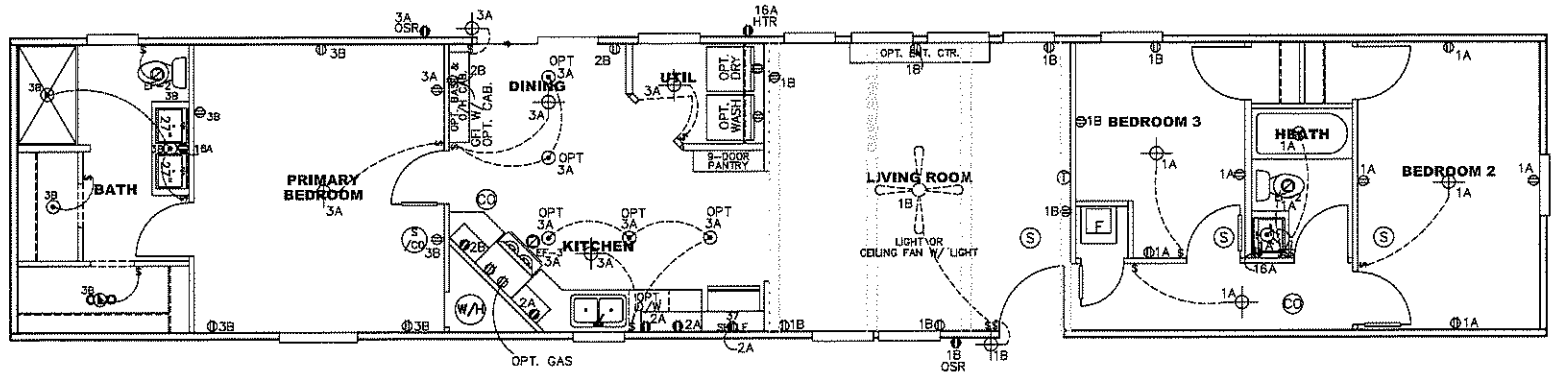
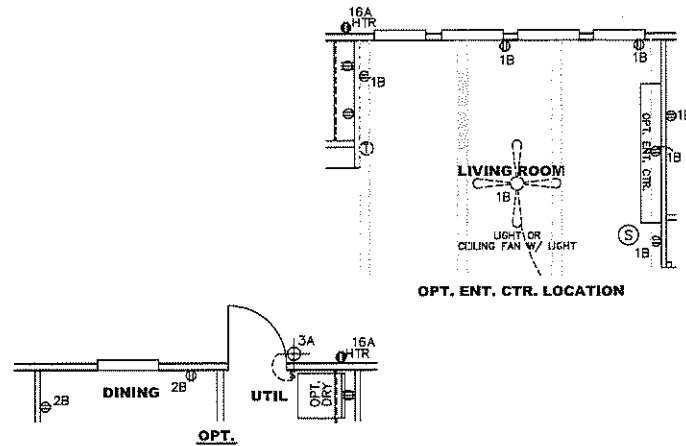


BATH OPT. 2



BATH OPT.



NOTES:

1. ALL CIRCUITS SHOWN ARE FOR REFERENCE AND MAY BE CHANGED BASED ON OPTIONAL COMPONENTS INSTALLED IN THE HOME.
2. REFER TO DAPIA MANUAL FOR SYMBOL CHART.
3. EITHER LIGHT OR RECEPTACLE MUST CONNECT TO SWITCH.
4. EF-1= 50 CFM EXHAUST FAN REQUIRED FOR THERMAL ZONE III THERMAL ZONES I & II MAY USE FAN OR WINDOW W/1.5 SQ. FT. OPENABLE GLASS.
5. EF-2= 50 CFM EXHAUST FAN REQUIRED THERMAL ZONE I, II, AND III.
6. EF-3= 100 CFM RANGE EXHAUST FAN, SWITCH AT HOOD.
7. EF-4= WHOLE HOUSE VENTILATION REQUIREMENTS PER DAPIA MANUAL.
8. REFER TO DAPIA MANUAL OR THE MFG. INSTALLATION INSTRUCTIONS FOR PROPER WIRE SIZE AND BREAKER SIZE FOR SPECIFIC APPLIANCE AND MODEL BEING INSTALLED.
9. ALL SMOKE ALARMS TO BE LOCATED ON THE CEILING.
10. CARBON MONOXIDE ALARMS ARE ONLY REQUIRED WHEN HOME HAS EITHER FUEL BURNING APPLIANCES, IS GARAGE READY OR IS BASEMENT READY. REFERENCE DAPIA MANUAL FOR ADDITIONAL INFORMATION.
11. DIMENSIONS SHOWN ON PRINT ARE APPROXIMATE AND TO BE USED ONLY AS A GUIDELINE.

APPROVED

HWC

REVISED
17 NOV 2021
FP-16-2992

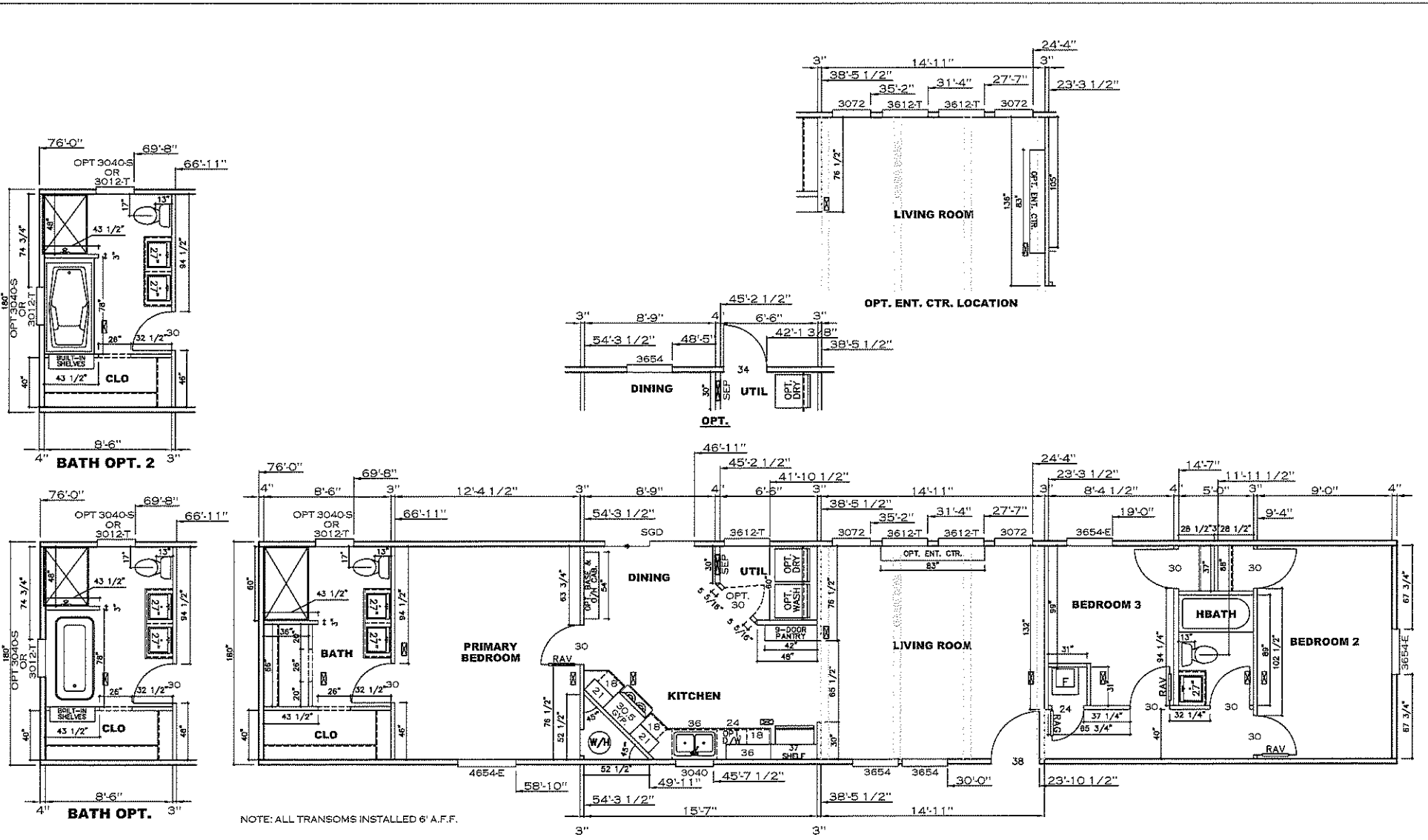
Federal Manufactured
Home Construction
And Safety Standards

APPROVED

CIRCUIT	CIRCUIT #	WIRE	BREAKER	CIRCUIT	CIRCUIT #	WIRE	BREAKER	CIRCUIT	CIRCUIT #	WIRE	BREAKER
LIGHT/RECEP	1A,1B,3A,3B	14-2	15-SP	WATER HEATER	4A,6B	SEE NOTE #B		BATHROOM	16A	12-2	20-SP
KITCHEN/DINING	2A,2B	12-2	20-SP	RANGE	5B,7A	SEE NOTE #B		OPT G/DISP	9B	SEE NOTE #B	
WASHER	12A	12-2	20-SP	OPT GAS RANGE	15B	SEE NOTE #B		OPT SPA/HP/JAC	11A,B	SEE NOTE #B	
DRYER	5A,7B	SEE NOTE #B		FURNACE	8A,8A,B,10A,B	SEE NOTE #B		FREEZER	N/A	SEE NOTE #B	
				OPT D/WASH	9A	SEE NOTE #B					
				SMOKE ALARM	4B	SEE NOTE #B					

1140 SQ.FT. (STD PLAN "CONDITIONED")
N/A SQ.FT. (W/OPT. PORCH/RECESS "CONDITIONED")

CMH MANUFACTURING	Model #: ANN16763E	Drawing #:
	Date: 10/13/21	Scale: N.T.S. 375121
Product Designer: E HARDWICK		16' x 76' Anniversary Entertainer
ELECTRICAL PLAN-06		



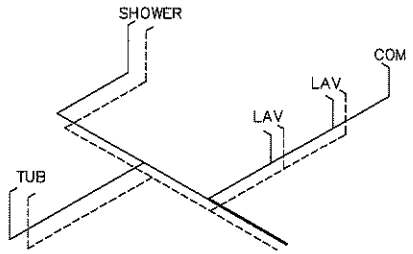
1140 SQ.FT. (STD PLAN "CONDITIONED")
 N/A SQ.FT. (W/OPT. PORCH/RECESS "CONDITIONED")

CMH MANUFACTURING Product Designer: E HARDWICK	Model #: AN16763E Date: 10/19/17	Drawing #: 375121 Scale: N.T.S.
	16' x 76' Anniversary Entertainer	

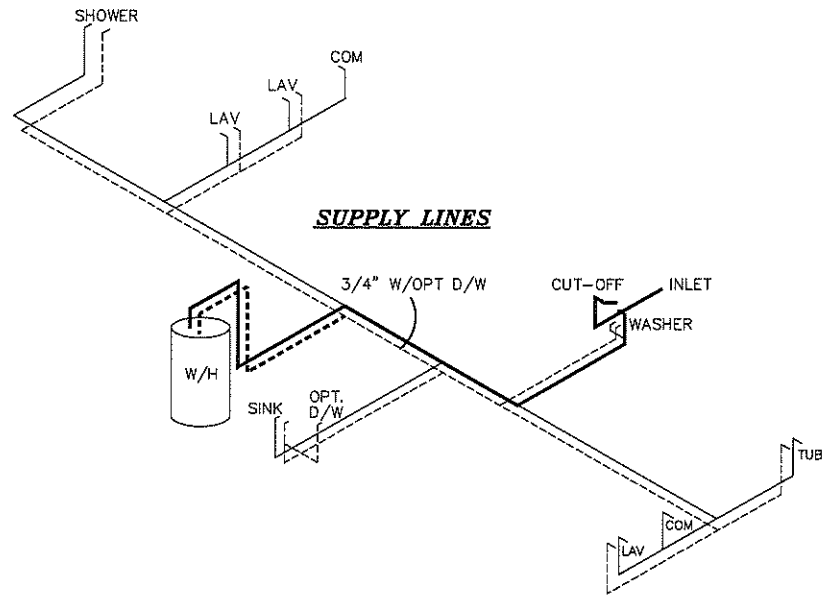
FLOOR PLAN

NOTE:
DASHED LINES INDICATE HOT WATER
SOLID LINES INDICATE COLD WATER

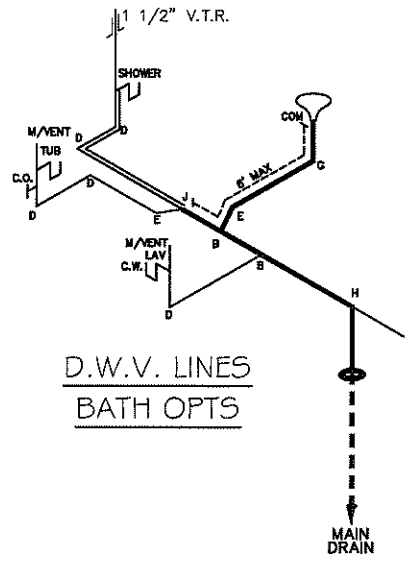
— = 3/4"
— = 1/2"



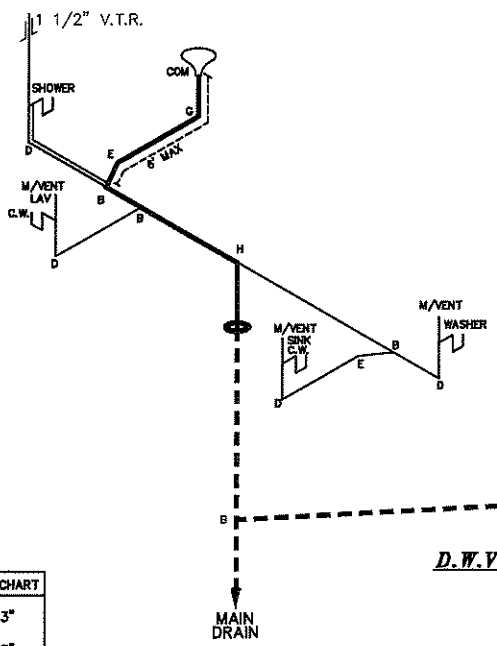
SUPPLY LINES
BATH OPTS



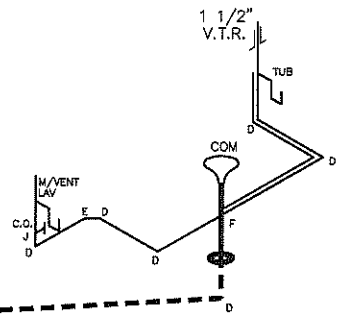
SUPPLY LINES



D.W.V. LINES
BATH OPTS



D.W.V. LINES



LEGEND

A	SHORT TURN T-Y
B	LONG TURN T-Y
C	1/4 BEND
D	LONG SWEEP 1/4 BEND
E	45 ELL
F	DBL. SANITARY TEE
G	4x3 CLOSET ELL
H	3\"/>

DWV LINE SIZE CHART

—	= 3"
—	= 2"
—	= 1 1/2"

APPROVED **HWC** **APPROVED**
 REVISED
 03 NOV 2021
 FP-16-2992
 Federal Manufactured
 Home Construction
 And Safety Standards

1140 SQ.FT. (STD PLAN "CONDITIONED")
 N/A SQ.FT. (W/OPT. PORCH/RECESS "CONDITIONED")

CMH MANUFACTURING Product Designer: E HARDWICK	Model #: ANN167G3E	Drawing #:
	Date: 10/13/21	Scale: N.T.S. 375121
16' x 76' Anniversary Entertainer		
D.W.V. and Supply Lines		

CMH MANUFACTURING, INC.
 Home Office
 5000 Clayton Road, Maryville, TN 37804
 PH: 865.380.3000 FAX: 865.380.3781

APPROVAL STAMP

TITLE

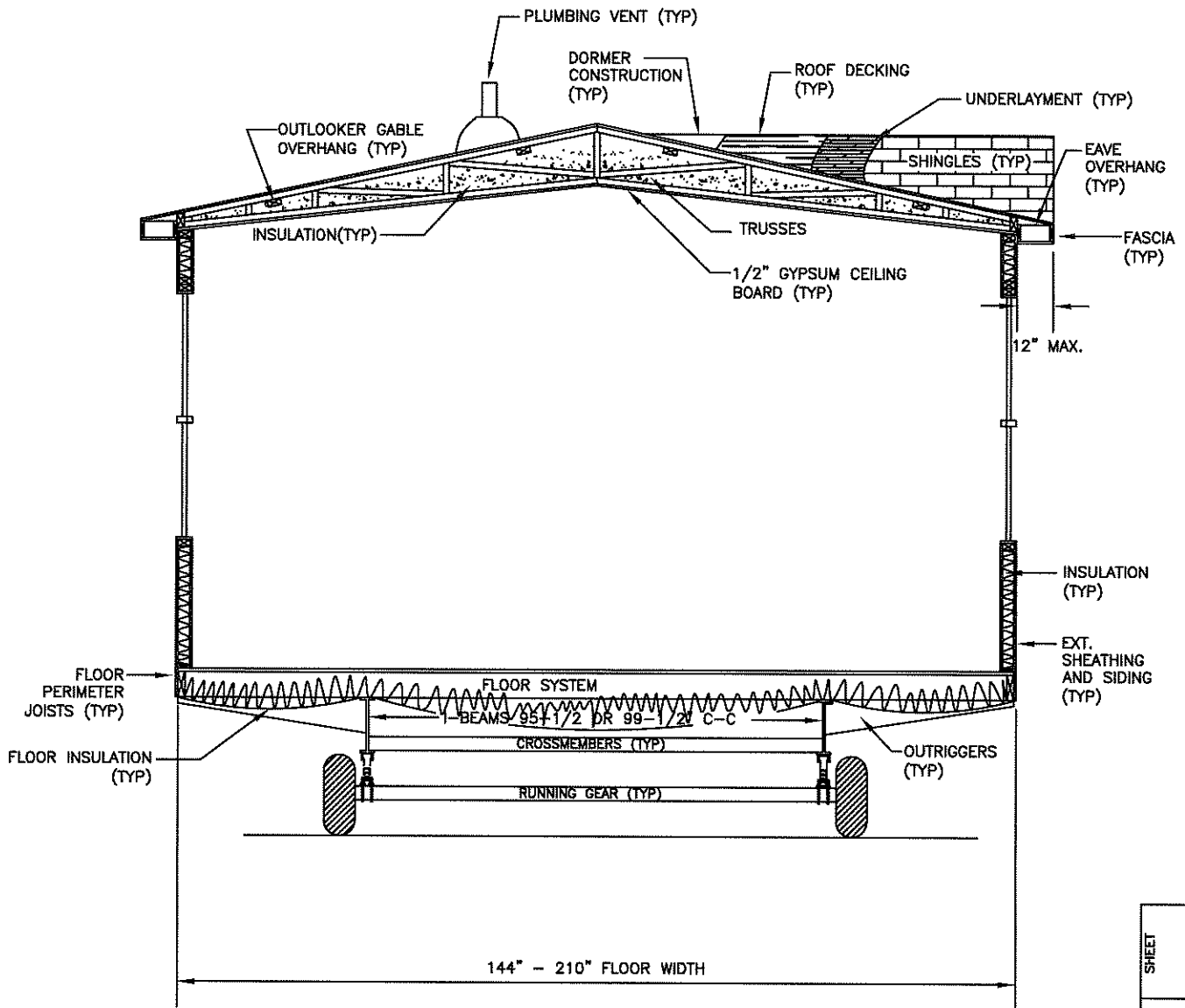
SINGLE WIDE
 CROSS-SECTION

BY
 JGM

DATE
 12/03/14

CHECKED

DATE



144" - 210" FLOOR WIDTH

CROSS-SECTION NTS

SHEET

REV

XS-1.02

DWG NO.