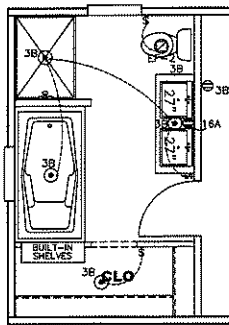
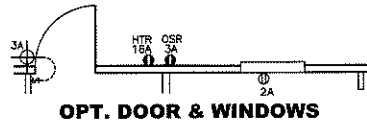


1140 SQ.FT. (STD PLAN "CONDITIONED")
 N/A SQ.FT. (W/OPT. PORCH/RECESS "CONDITIONED")

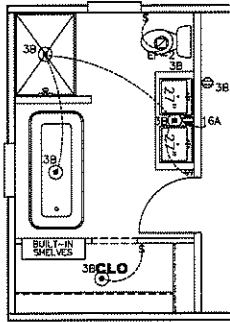
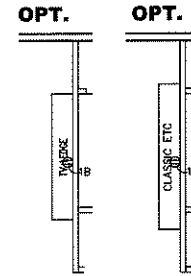
CMH MANUFACTURING	Model #: ANNI6763C	Drawing #:
	Date: 9/20/21	Scale: NT5 375120
Product Designer: E. HARDWICK		16 x 76 Anniversary Choice
FLOOR PLAN		



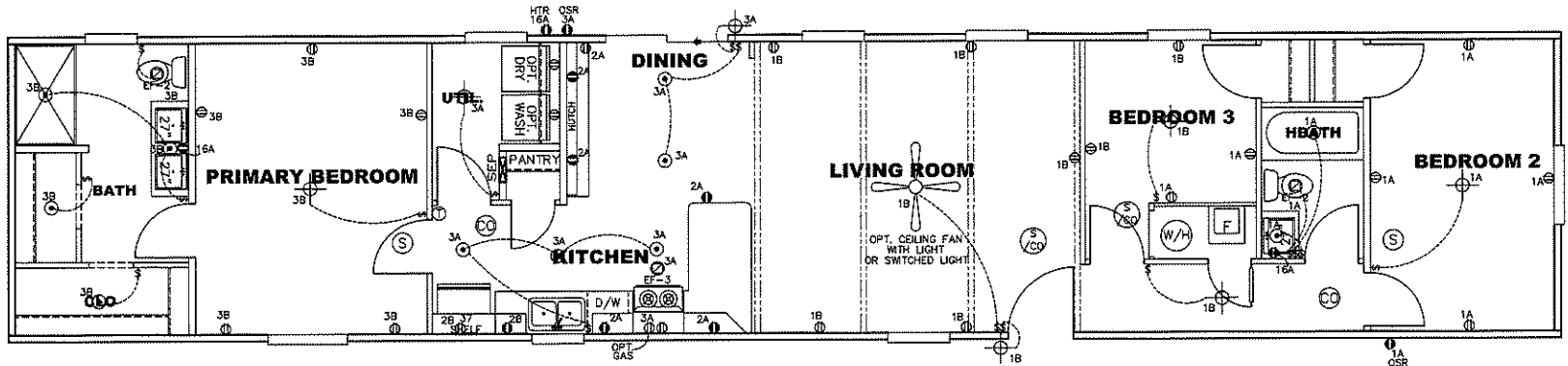
BATH OPT. 2



OPT. DOOR & WINDOWS



BATH OPT.



NOTES:

- ALL CIRCUITS SHOWN ARE FOR REFERENCE AND MAY BE CHANGED BASED ON OPTIONAL COMPONENTS INSTALLED IN THE HOME.
- REFER TO DAPIA MANUAL FOR SYMBOL CHART.
- EITHER LIGHT OR RECEPTACLE MUST CONNECT TO SWITCH.
- EF-1= 50 CFM EXHAUST FAN REQUIRED FOR THERMAL ZONE III THERMAL ZONES I & II MAY USE FAN OR WINDOW W/1.5 SQ. FT. OPENABLE GLASS.
- EF-2= 50 CFM EXHAUST FAN REQUIRED THERMAL ZONE I, II, AND III.
- EF-3= 100 CFM RANGE EXHAUST FAN, SWITCH AT HOOD.
- EF-4= WHOLE HOUSE VENTILATION REQUIREMENTS PER DAPIA MANUAL.
- REFER TO DAPIA MANUAL OR THE MFG. INSTALLATION INSTRUCTIONS FOR PROPER WIRE SIZE AND BREAKER SIZE FOR SPECIFIC APPLIANCE AND MODEL BEING INSTALLED.
- ALL SMOKE ALARMS TO BE LOCATED ON THE CEILING.
- CARBON MONOXIDE ALARMS ARE ONLY REQUIRED WHEN HOME HAS EITHER FUEL BURNING APPLIANCES, IS GARAGE READY OR IS BASEMENT READY. REFERENCE DAPIA MANUAL FOR ADDITIONAL INFORMATION.
- DIMENSIONS SHOWN ON PRINT ARE APPROXIMATE AND TO BE USED ONLY AS A GUIDELINE.

APPROVED **HWC** **APPROVED**

REVISED
17 NOV 2021
FP-16-2989

Federal Manufactured
Home Construction
And Safety Standards

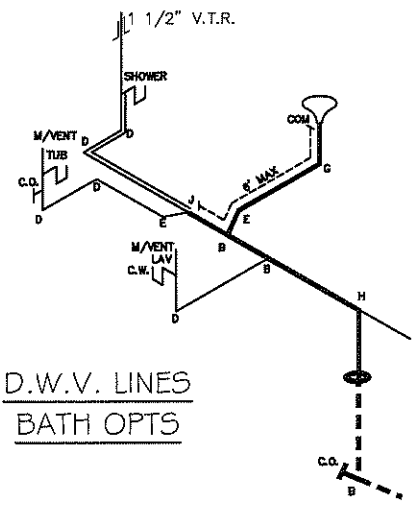
CIRCUIT	CIRCUIT #	WIRE	BREAKER	CIRCUIT	CIRCUIT #	WIRE	BREAKER	CIRCUIT	CIRCUIT #	WIRE	BREAKER
LIGHT/RECEP	1A, 1B, 3A, 3B	14-2	15-SP	WATER HEATER	4A, 6B	SEE NOTE #8		BATHROOM	16A	12-2	20-SP
KITCHEN	2A, 2B	12-2	20-SP	RANGE	5B, 7A	SEE NOTE #8		OPT G/DISP	9B	SEE NOTE #8	
WASHER	12A	12-2	20-SP	FURNACE	8A, 8A.B, 10A, B	SEE NOTE #8		OPT DRYER	11A, B	SEE NOTE #8	
DRYER	5A, 7B	SEE NOTE #8		OPT D/WASH	9A	SEE NOTE #8		FREEZER	N/A	SEE NOTE #8	

1140 SQ.FT. (STD PLAN "CONDITIONED")
N/A SQ.FT. (W/OPT. PORCH/RECESS "CONDITIONED")

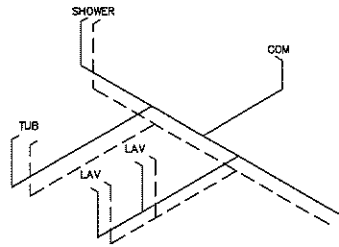
CMH MANUFACTURING	Model #: ANN16763C Date: 9/20/21	Scale: NT5 375120	Drawing #:
Product Designer: E. HARDWICK		16 x 76 Anniversary Choice	
ELECTRICAL PLAN-06			

NOTE: DASHED LINES INDICATE HOT WATER
SOLID LINES INDICATE COLD WATER

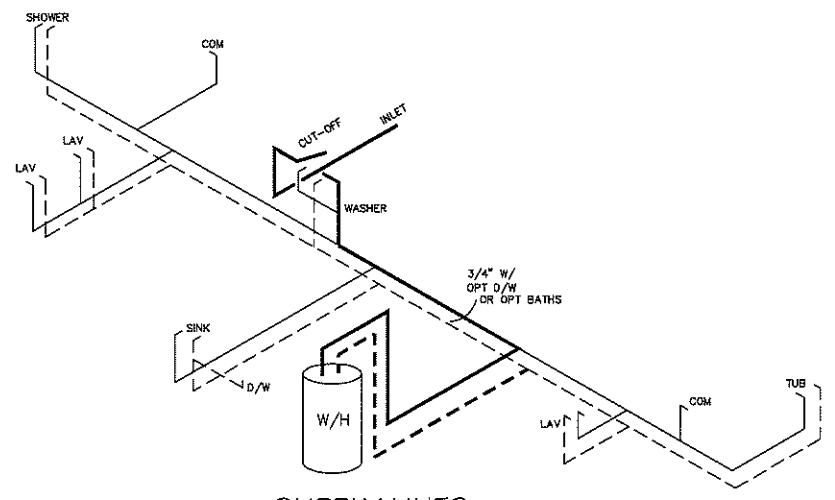
— = 3/4"
— = 1/2"



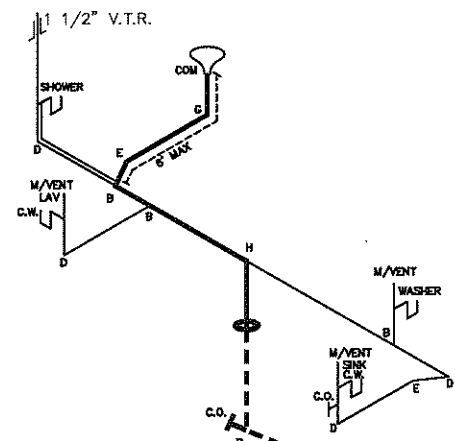
D.W.V. LINES
BATH OPTS



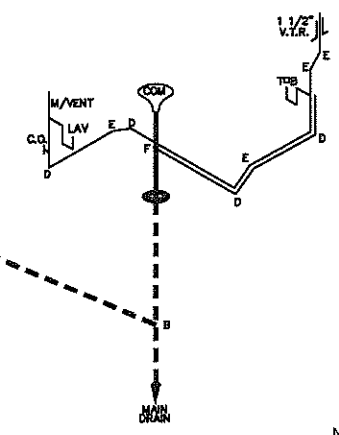
SUPPLY LINES
BATH OPTS



SUPPLY LINES



D.W.V. LINES



APPROVED **HWG** **APPROVED**
 REVISED
 03 NOV 2021
 FP-16-2989
 Federal Manufactured
 Home Construction
 And Safety Standards

LEGEND	
A	SHORT TURN T-Y
B	LONG TURN T-Y
C	1/4 BEND
D	LONG SWEEP 1/4 BEND
E	45 ELL
F	DBL. SANITARY TEE
G	4x3 CLOSET ELL
H	DOUBLE ELL
I	22 1/2" ELL
J	45° Y
K	LONG TURN STREET ELBOW
L	45 FTG ELL

DWV LINE SIZE CHART	
—	= 3"
—	= 2"
—	= 1 1/2"

1140 SQ.FT. (STD PLAN "CONDITIONED")
 N/A SQ.FT. (W/OPT. PORCH/RECESS "CONDITIONED")

CMH MANUFACTURING	Model #: ANN16763C Date: 9/20/21	Drawing #: Scale: NTS 375120
Product Designer: E. HARDWICK		16 x 76 Anniversary Choice
D.W.V. and Supply Lines		

CMH MANUFACTURING, INC.
 Home Office
 5000 Clayton Road, Maryville, TN 37804
 PH: 865.380.3000 FAX: 865.380.3781

APPROVAL STAMP

TITLE

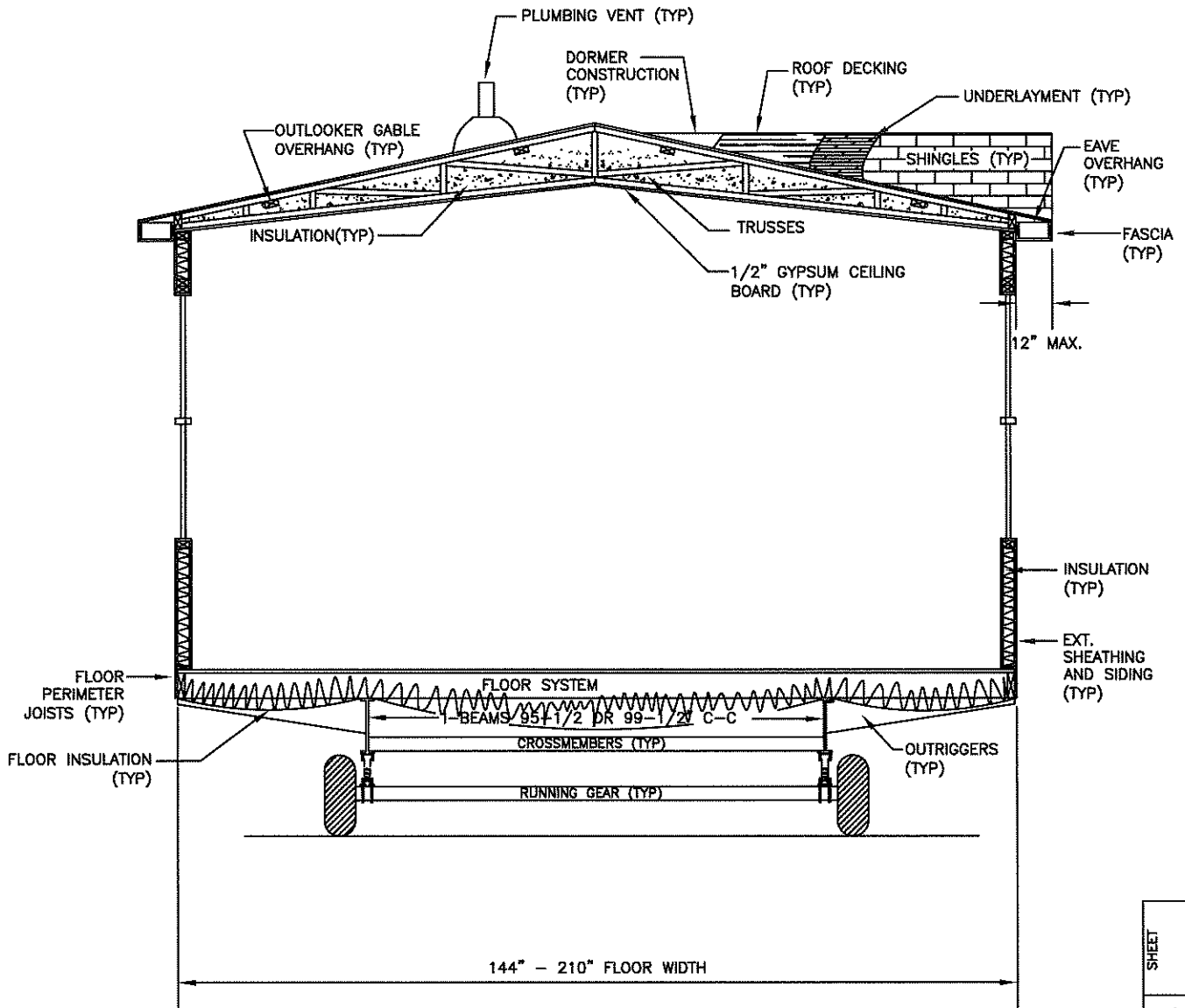
SINGLE WIDE
 CROSS-SECTION

BY
 JGM

DATE
 12/03/14

CHECKED

DATE



CROSS-SECTION^{NTS}

SHEET

REV

XS-1.02

DWG NO.