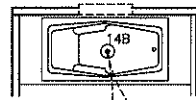


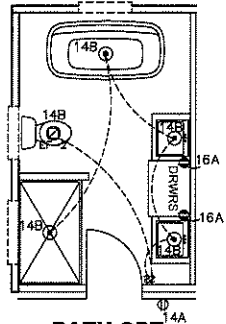
NOTES:

1. ALL CIRCUITS SHOWN ARE FOR REFERENCE AND MAY BE CHANGED BASED ON OPTIONAL COMPONENTS INSTALLED IN THE HOME.
2. REFER TO DAPIA MANUAL FOR SYMBOL CHART.
3. EITHER LIGHT OR RECEPTACLE MUST CONNECT TO SWITCH.
4. EF-1= 50 CFM EXHAUST FAN REQUIRED FOR THERMAL ZONE III THERMAL ZONES I & II MAY USE FAN OR WINDOW W/1.5 SQ. FT. OPENABLE GLASS.
5. EF-2= 50 CFM EXHAUST FAN REQUIRED THERMAL ZONE I, II, AND III.
6. EF-3= 100 CFM RANGE EXHAUST FAN, SWITCH AT HOOD.
7. EF-4= WHOLE HOUSE VENTILATION REQUIREMENTS PER DAPIA MANUAL.
8. REFER TO DAPIA MANUAL OR THE MFG. INSTALLATION INSTRUCTIONS FOR PROPER WIRE SIZE AND BREAKER SIZE FOR SPECIFIC APPLIANCE AND MODEL BEING INSTALLED.
9. ALL SMOKE ALARMS TO BE LOCATED ON THE CEILING.
10. CARBON MONOXIDE ALARMS ARE ONLY REQUIRED WHEN HOME HAS EITHER FUEL BURNING APPLIANCES, IS GARAGE READY OR IS BASEMENT READY. REFERENCE DAPIA MANUAL FOR ADDITIONAL INFORMATION.
11. DIMENSIONS SHOWN ON PRINT ARE APPROXIMATE AND TO BE USED ONLY AS A GUIDELINE.

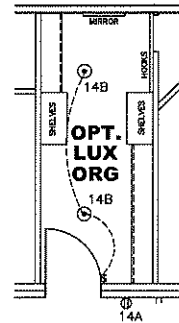
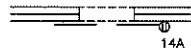
OPT WINDOWS



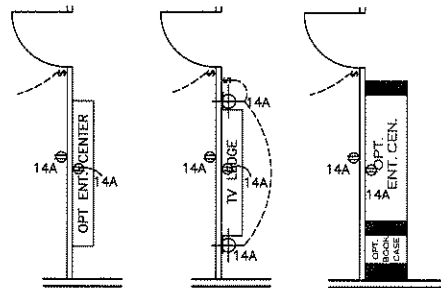
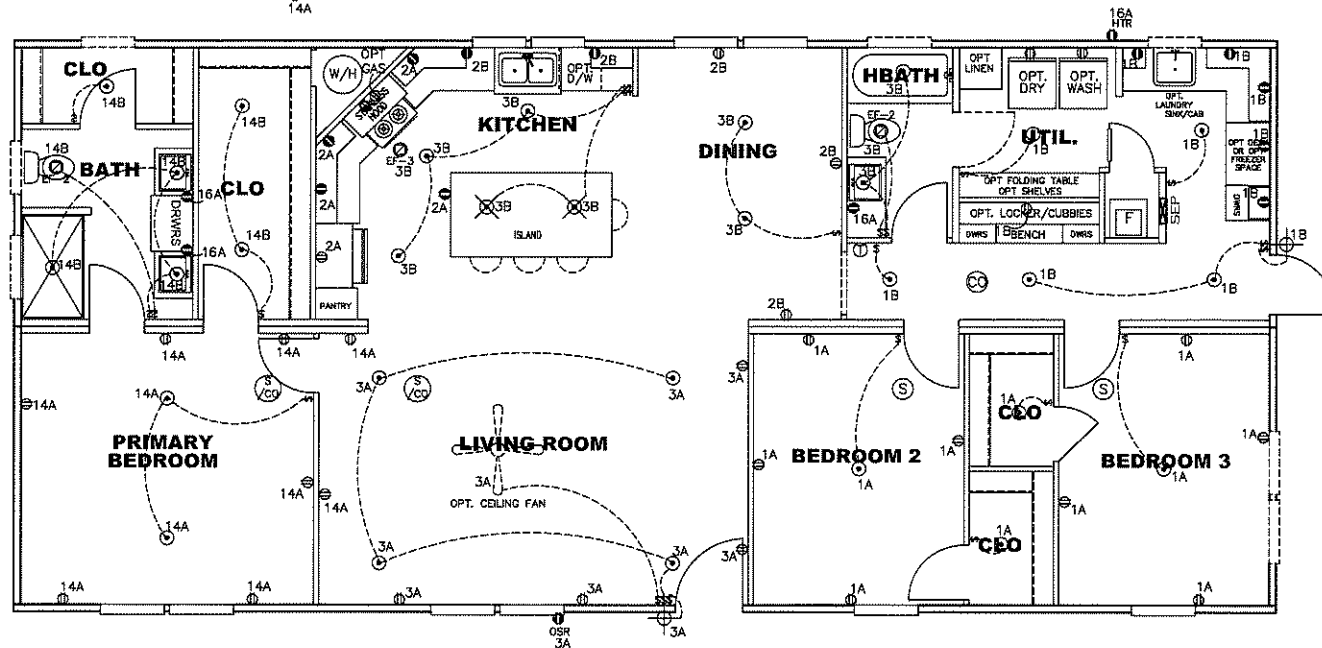
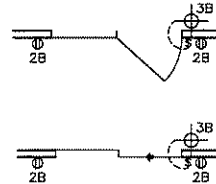
BATH OPT. 2



BATH OPT. 1A



OPT. LUX ORG



OPT.

OPT.

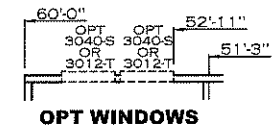
OPT.

CIRCUIT	CIRCUIT #	WIRE	BREAKER	CIRCUIT	CIRCUIT #	WIRE	BREAKER	CIRCUIT	CIRCUIT #	WIRE	BREAKER
LIGHT/RECEP	1A,B,3A,B,14A,B	14-2	15-SP	WATER HEATER	4A,6B	SEE NOTE #8		BATHROOM	16A	12-2	20-SP
KITCHEN/DINING	2A,2B	12-2	20-SP	RANGE	5B,7A	SEE NOTE #8		OPT G/DISP	9B	SEE NOTE #8	
WASHER	12A	12-2	20-SP	OPT GAS RANGE	15B	SEE NOTE #8		OPT W/SH/W/AC	11A,B	SEE NOTE #8	
DRYER	5A,7B	SEE NOTE #8		FURNACE	6A,8A,B,10A,B	SEE NOTE #8		FREEZER	N/A	SEE NOTE #8	
				OPT D/WASH	9A	SEE NOTE #8					
				SMOKE ALARM	4B	SEE NOTE #8					

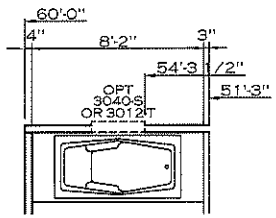
1640 SQ.FT. (STD PLAN "CONDITIONED")
 N/A SQ.FT. (W/OPT. PORCH/RECESS "CONDITIONED")

CMH MANUFACTURING	Model #: 5AV20603A	Drawing #:
Product Designer: E HARDWICK	Date: 2/18/22	Scale: N.T.S.
		37M208

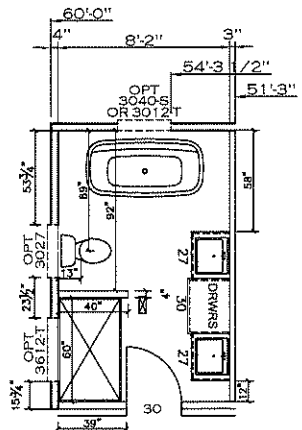
ELECTRICAL PLAN-06



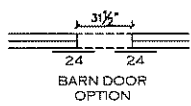
OPT WINDOWS



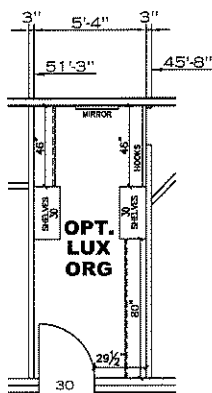
BATH OPT. 2



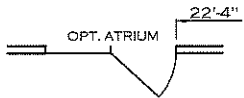
BATH OPT.



BARN DOOR OPTION



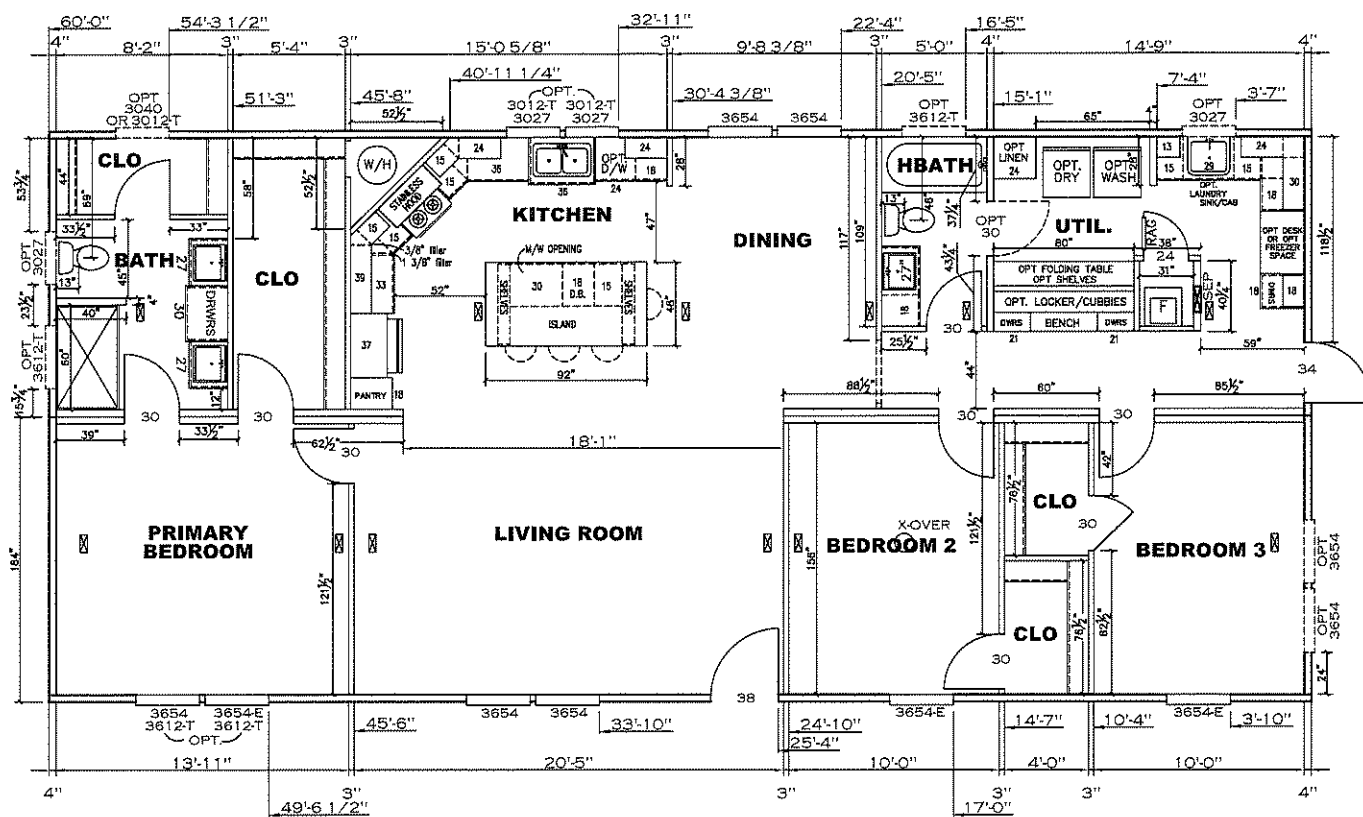
OPT. LUX ORG



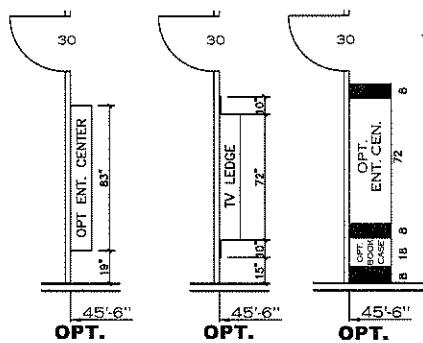
OPT. ATRIUM



OPT. SGD



NOTE: TRANSOMS INSTALLED 6" A.F.F.

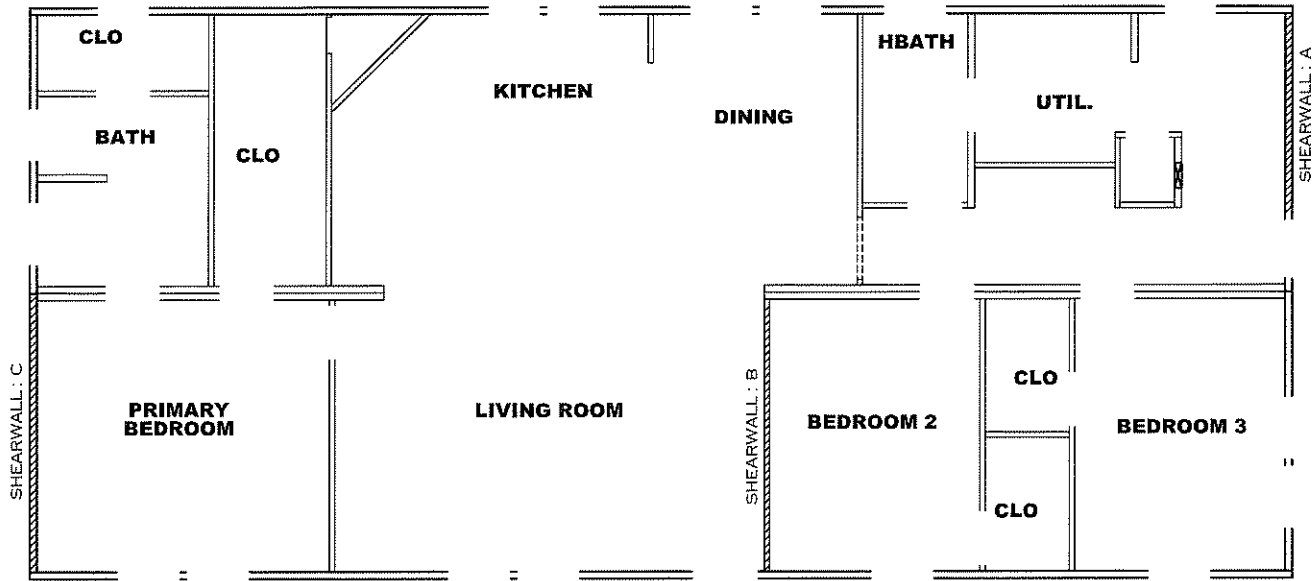


OPT. OPT. OPT.

1640 SQ.FT. (STD PLAN "CONDITIONED")
 N/A SQ.FT. (W/OPT. PORCH/RECESS "CONDITIONED")

CMH MANUFACTURING	Model #: SAV28603A	Drawing #:
	Date: 2/18/22	Scale: N.T.S. 37M208
Product Designer: E HARDWICK		28 X 60 Stella

FLOOR PLAN



Model # 37M208

Minimum Joist Spacing 16 "

Box Width = 164 " Double wide No Offset Box
 Box Length = 60 ft. 95.5" 12" MIN. IBEAM No Clerestory
 No Skylights No Origami Dormer
 No Porches No Sunken Floor
 Joist Size = #2 spf 2x6 Lags 9Mx3" No Parapet Roof

Version R13.19

Wind Zone 1 Standard Roof Ceiling board only (152 plf) Chords: 2x4 SPF Stud Top Plate & 1x3 SPF Rail. Each spliced w/2x4 MCP. 96 inch sidewall

Shearwall	Dist./ Hitch	Length	PLF	# of Joists	Lags	Notes
A	0'	56"	162	2	1/1	
B	24.96'	136"	162	2	2/1	
C	60'	80"	162	2	1/1	

Wind Zone 2 Standard Roof (3/8" sheathing only with 15 gax1.5" at 5"/10" oc. (197 plf) Chords: 2x4 SPF Stud Top Plate & 1x3 SPF Rail. Each spliced w/2x4 MCP. 96 inch sidewall

Shearwall	Dist./ Hitch	Length	PLF	# of Joists	Lags	Notes
A	0'	112"	425	3	4/3	
B	24.96'	136"	425	2	5/2	
C	60'	Full	425	2	5/5	

Wind Zone 3 Standard Roof (3/8" sheathing only with 15 gax1.5" at 5"/10" oc. (197 plf) Chords: 2x4 SPF Stud Top Plate & 1x3 SPF Rail. Each spliced w/2x4 MCP. 96 inch sidewall

Shearwall	Dist./ Hitch	Length	PLF	# of Joists	Lags	Notes
A	0'	112"	425	3	4/3	
B	24.96'	Full	515	2	4/4	
C	60'	Full	425	2	5/5	

Wind Zone 1 Standard Roof (3/8" sheathing only with 15 gax1.5" at 5"/10" oc. (197 plf) Chords: 2x4 SPF Stud Top Plate & 1x3 SPF Rail. Each spliced w/2x4 MCP. 96 inch sidewall

Shearwall	Dist./ Hitch	Length	PLF	# of Joists	Lags	Notes
A	0'	112"	425	3	4/3	
C	60'	136"	162	2	2/1	

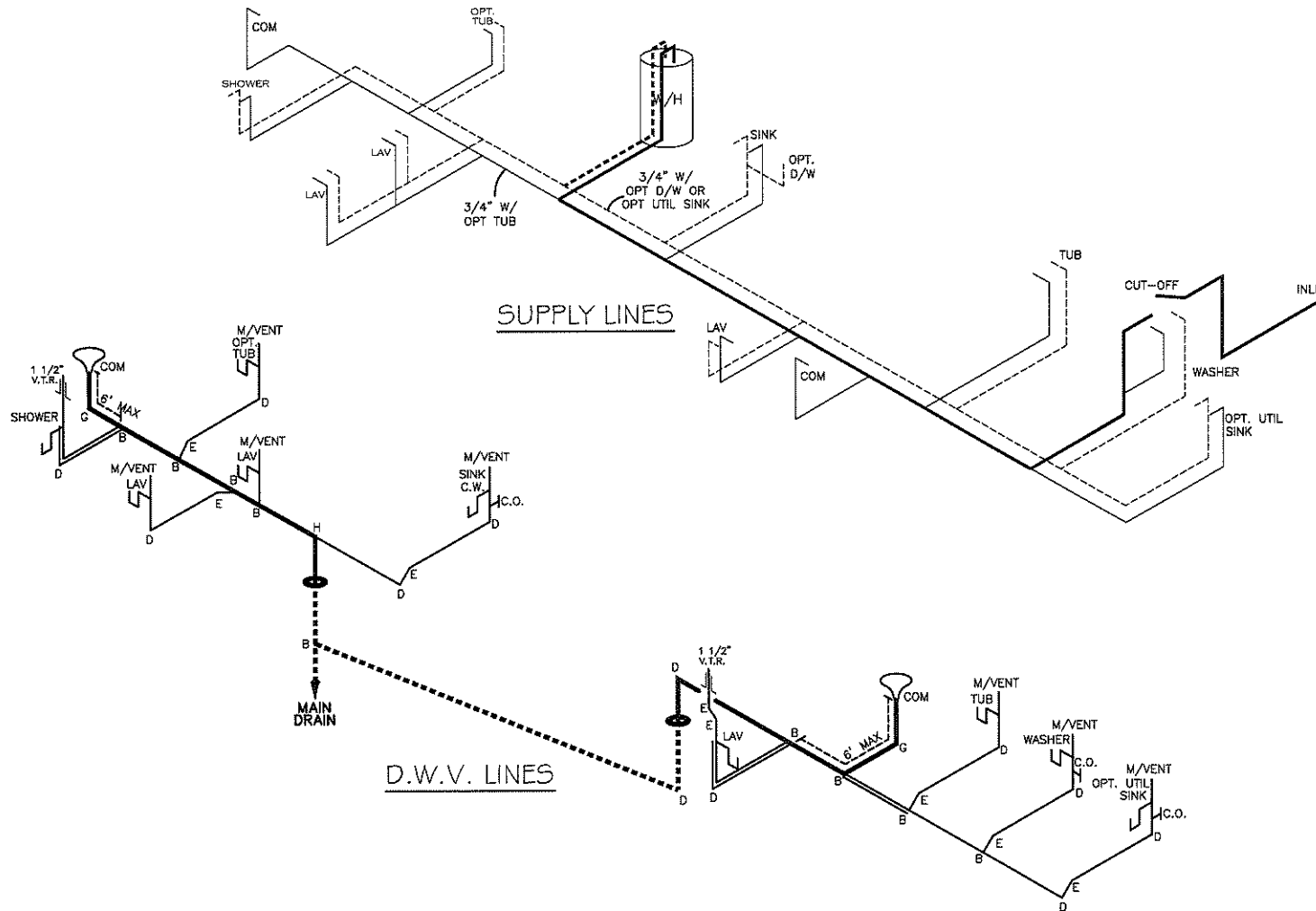
1640 SQ.FT. (STD PLAN "CONDITIONED")
 N/A SQ.FT. (W/OPT. PORCH/RECESS "CONDITIONED")

CMH MANUFACTURING	Model #: SAV28603A	Drawing #:
	Date: 2/1/22	Scale: N.T.S.
Product Designer: E HARDWICK		28 X 60 Stella

SHEARWALL PAGE

NOTE:
DASHED LINES INDICATE HOT WATER
SOLID LINES INDICATE COLD WATER

———— = 3/4"
———— = 1/2"



LEGEND	
A	SHORT TURN T-Y
B	LONG TURN T-Y
C	1/4 BEND
D	LONG SWEEP 1/4 BEND
E	45 ELL
F	DBL. SANITARY TEE
G	4x3 CLOSET ELL
H	DOUBLE ELL
I	22 1/2° ELL
J	45° Y
K	LONG TURN STREET ELBOW
L	45 FTG ELL

DWV LINE SIZE CHART	
————	= 3"
————	= 2"
————	= 1 1/2"

APPROVED **HWG** **APPROVED**
 REVISED
 05 MAY 2022
 FP-28-5516
 Federal Manufactured
 Home Construction
 And Safety Standards

1640 SQ.FT. (STD PLAN "CONDITIONED")	
N/A SQ.FT. (W/OPT. PORCH/RECESS "CONDITIONED")	
CMH MANUFACTURING	Model #: SAV28603A Date: 2/10/22 Scale: N.T.S.
Product Designer: E HARDWICK	Drawing #: 37M208
28 X 60 Stella	
D.W.V. and Supply Lines	

CMH MANUFACTURING, INC.

Home Office
5000 Clayton Road, Maryville, TN 37804
PH: 865.380.3000 FAX: 865.380.3781

APPROVAL STAMP

TITLE

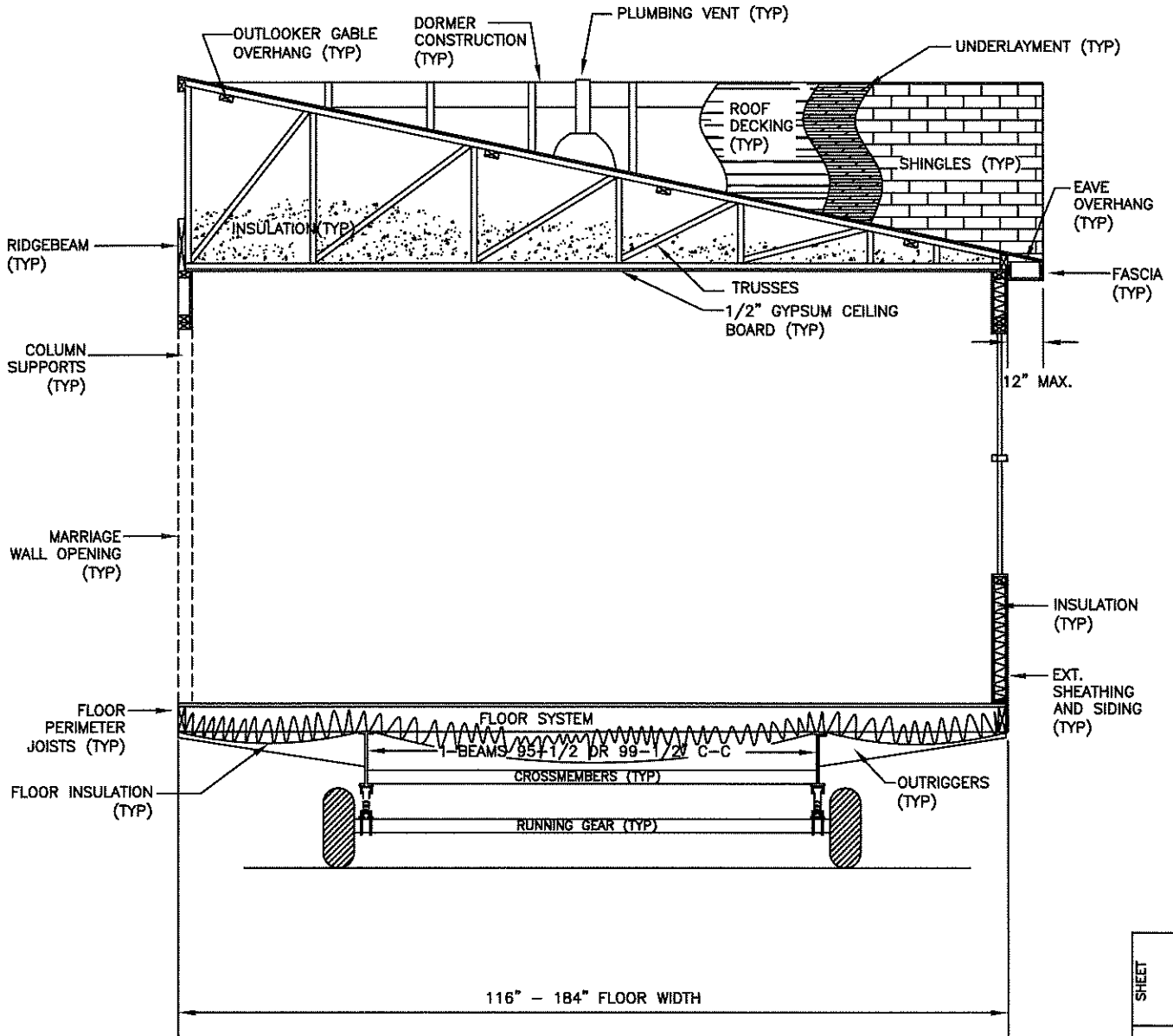
DOUBLE WIDE
CROSS-SECTION

BY
JGM

DATE
11/19/14

CHECKED

DATE



CROSS-SECTION^{NTS}

SHEET

REV

XS-1.01

DWG NO.