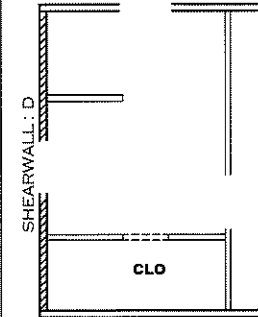


BATH OPT. 1



BATH OPT. 2

Model # 37s130

Box Width = 180" Single wide No Offset Box
 Box Length = 76 ft. 95.5" 12" MIN. IBEAM No Clerestory
 No Skylights No Origami Dormer
 No Porches No Sunken Floor
 Joist Size = #2 spf 2x6 Lags 9Mx3" No Parapet Roof

Minimum Joist Spacing 16"

Version R13.19

Wind Zone 1 Standard Roof Ceiling board only (152 plf) Chords: 2x4 SPF Stud Top Plate & 1x3 SPF Rail. Each spliced w/2x4 MCP. 96 inch sidewall

Shearwall	Dist./ Hitch	Length	PLF	# of Joists	Lags	Notes	SW1/SW2
A	0'	135.5"	162	2	1/1	Split Shearwall	67.75/67.75
B	23.25'	128"	162	2	2/1		
C	56'	140.5"	162	2	2/2	Split Shearwall	69/71.5
D	76'	141.5"	162	2	1/1	Split Shearwall	74.75/66.75

Wind Zone 2 Standard Roof (3/8" sheathing only with 15 gax 1.5" at 5'10" oc. (197 plf) Chords: 2x4 SPF Stud Top Plate & 1x3 SPF Rail. Each spliced w/2x4 MCP. 96 inch sidewall

Shearwall	Dist./ Hitch	Length	PLF	# of Joists	Lags	Notes	SW1/SW2	% over
A	0'	135.5"	162	2	2/2	Split Shearwall	67.75/67.75	0.37
B	23.25'	124"	425	3	4/1			
C	56'	140.5"	425	3	4/4	Split Shearwall	69/71.5	
D	76'	141.5"	162	2	2/2	Split Shearwall	74.75/66.75	

Wind Zone 3 Standard Roof (3/8" & ceiling with 15 gax 1.5" at 5'10" oc. (267 plf) Chords: 2x4 SPF Stud Top Plate & 1x3 SPF Rail. Each spliced w/2x4 MCP. 96 inch sidewall

Shearwall	Dist./ Hitch	Length	PLF	# of Joists	Lags	Notes	SW1/SW2
A	0'	135.5"	425	6	4/4	Split Shearwall	67.75/67.75
B	23.25'	124"	515	4	5/2		
C	56'	140.5"	515	5	5/5	Split Shearwall	69/71.5
D	76'	141.5"	162	2	2/2	Split Shearwall	74.75/66.75

Wind Zone 1 Standard Roof (3/8" sheathing only with 15 gax 1.5" at 5'10" oc. (197 plf) Chords: 2x4 SPF #3 Top Plate spliced w/ 12" glue block & 1x6 SPF Rail. 96 inch sidewall

Shearwall	Dist./ Hitch	Length	PLF	# of Joists	Lags	Notes	SW1/SW2
A	0'	135.5"	425	6	4/4	Split Shearwall	67.75/67.75
D	76'	141.5"	425	6	4/4	Split Shearwall	74.75/66.75

Model # 37s130-OPT

Box Width = 180" Single wide No Offset Box
 Box Length = 76 ft. 95.5" 12" MIN. IBEAM No Clerestory
 No Skylights No Origami Dormer
 No Porches No Sunken Floor
 Joist Size = #2 spf 2x6 Lags 9Mx3" No Parapet Roof

Minimum Joist Spacing 16"

Version R13.19

Wind Zone 1 Standard Roof Ceiling board only (152 plf) Chords: 2x4 SPF Stud Top Plate & 1x3 SPF Rail. Each spliced w/2x4 MCP. 96 inch sidewall

Shearwall	Dist./ Hitch	Length	PLF	# of Joists	Lags	Notes	SW1/SW2
A	0'	52"	162	2	1/1		
B	23.25'	128"	162	2	2/1		
C	56'	140.5"	162	2	2/2	Split Shearwall	69/71.5
D	76'	141.5"	162	2	1/1	Split Shearwall	74.75/66.75

Wind Zone 2 Standard Roof (3/8" sheathing only with 15 gax 1.5" at 5'10" oc. (197 plf) Chords: 2x4 SPF Stud Top Plate & 1x3 SPF Rail. Each spliced w/2x4 MCP. 96 inch sidewall

Shearwall	Dist./ Hitch	Length	PLF	# of Joists	Lags	Notes	SW1/SW2
A	0'	104"	425	7	4/2		
B	23.25'	124"	425	3	4/1		
C	56'	140.5"	425	3	4/4	Split Shearwall	69/71.5
D	76'	141.5"	162	2	2/2	Split Shearwall	74.75/66.75

Wind Zone 3 Standard Roof (3/8" & ceiling with 15 gax 1.5" at 5'10" oc. (267 plf) Chords: 2x4 SPF Stud Top Plate & 1x3 SPF Rail. Each spliced w/2x4 MCP. 96 inch sidewall

Shearwall	Dist./ Hitch	Length	PLF	# of Joists	Lags	Notes	SW1/SW2
A	0'	104"	425	7	4/2		
B	23.25'	124"	515	4	5/2		
C	56'	140.5"	515	5	5/5	Split Shearwall	69/71.5
D	76'	141.5"	162	2	2/2	Split Shearwall	74.75/66.75

Wind Zone 1 Standard Roof (3/8" sheathing only with 15 gax 1.5" at 5'10" oc. (197 plf) Chords: 2x4 SPF #3 Top Plate spliced w/ 12" glue block & 1x6 SPF Rail. 96 inch sidewall

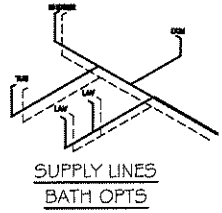
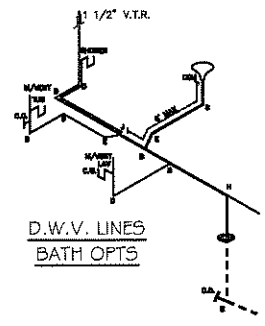
Shearwall	Dist./ Hitch	Length	PLF	# of Joists	Lags	Notes	SW1/SW2
A	0'	104"	425	7	4/2		
D	76'	141.5"	425	6	4/4	Split Shearwall	74.75/66.75

1140 SQ.FT. (STD PLAN "CONDITIONED")
 N/A SQ.FT. (W/OPT. PORCH/RECESS "CONDITIONED")

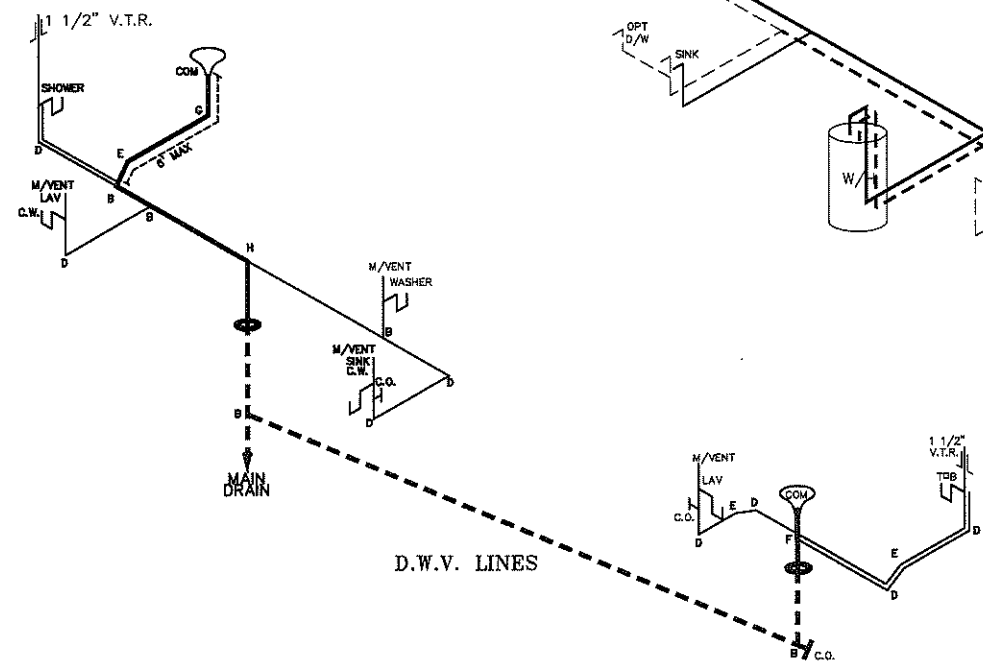
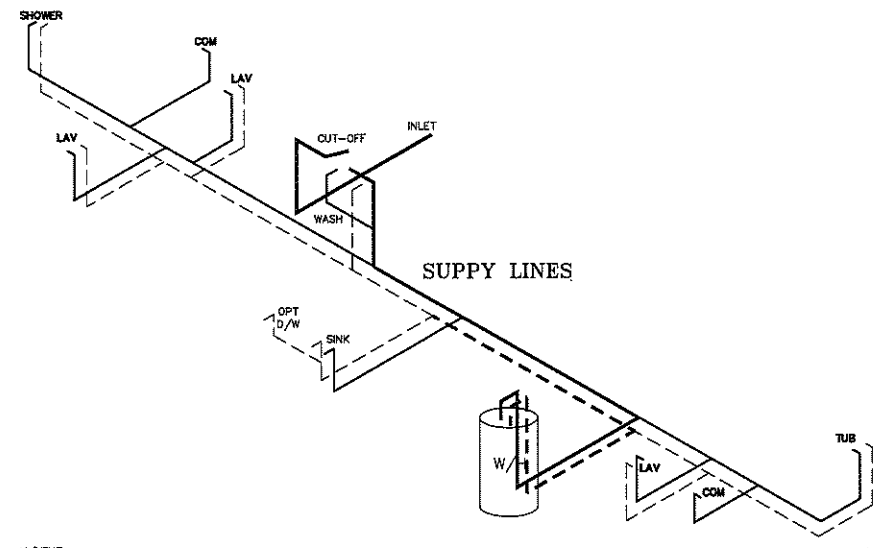
CMH MANUFACTURING Product Designer: E HARDWICK	Model #: ANN16763D	Drawing #:
	Date: 2/23/22	Scale: NTS
16'x76' Anniversary Splash		
SHEARWALL PAGE		

DASHED LINES INDICATE HOT WATER
SOLID LINES INDICATE COLD WATER

—— = 3/4"
—— = 1/2"



SUPPLY LINES
BATH OPTS



DWV LINE SIZE CHART

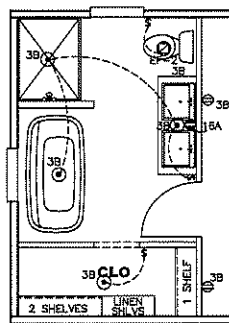
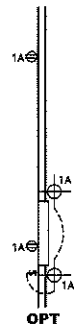
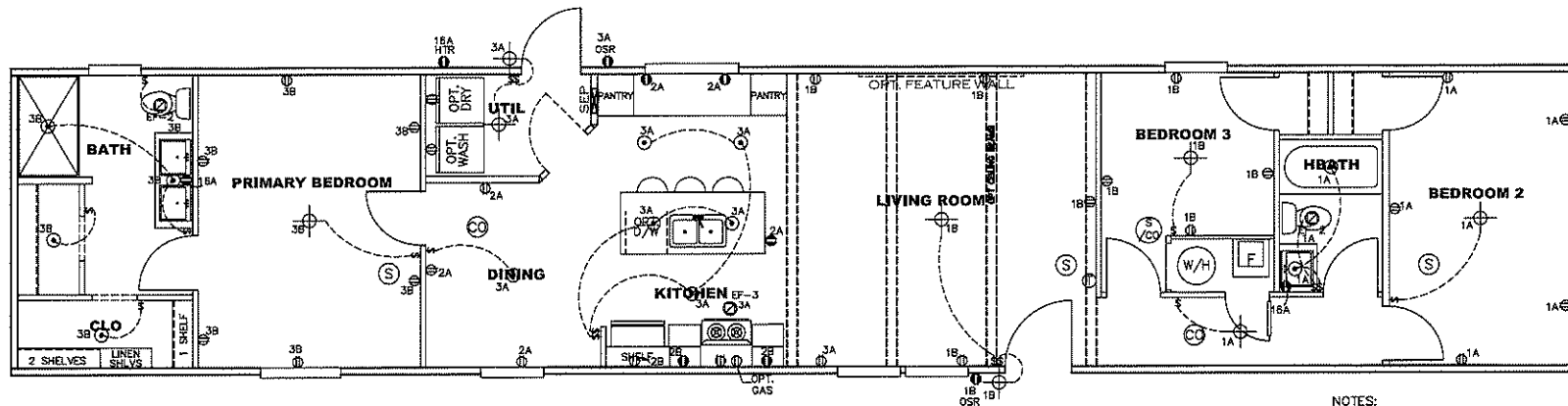
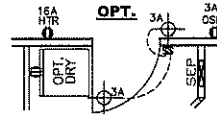
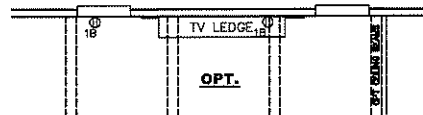
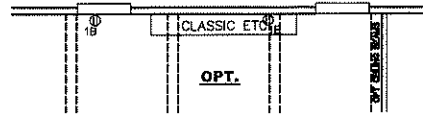
——	= 3"
——	= 2"
——	= 1 1/2"

LEGEND	
A	SHORT TURN T-Y
B	LONG TURN T-Y
C	1/4 BEND
D	LONG SWEEP 1/4 BEND
E	45 ELL
F	DBL. SANITARY TEE
G	4x3 CLOSET ELL
H	DOUBLE ELL
I	22 1/2 ELL
J	45 Y
K	LONG TURN STREET ELBOW
I	4x4 FITG ELL

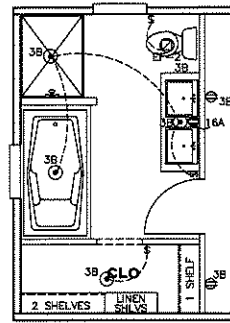
APPROVED **IWC** **APPROVED**
 01 MAR 2022
 FP-16-3022
 Federal Manufactured
 Home Construction
 And Safety Standards

1140 SQ.FT. (STD PLAN "CONDITIONED")
 N/A SQ.FT. (W/OPT. PORCH/RECESS "CONDITIONED")

CMH MANUFACTURING	Model #: ANN16763D Date: 2/23/22	Drawing #: 37S130
	Product Designer: E HARDWICK 16'x76' Anniversary Splash	
D.W.V. and Supply Lines		



BATH OPT. 1



BATH OPT. 2

APPROVED **HWC** **APPROVED**
 REVISED
 26 JULY 2022
 FP-16-3022
 Federal Manufactured
 Home Construction
 And Safety Standards

NOTES:

1. ALL CIRCUITS SHOWN ARE FOR REFERENCE AND MAY BE CHANGED BASED ON OPTIONAL COMPONENTS INSTALLED IN THE HOME.
2. REFER TO DAPIA MANUAL FOR SYMBOL CHART.
3. EITHER LIGHT OR RECEPTACLE MUST CONNECT TO SWITCH.
4. EF-1= 50 CFM EXHAUST FAN REQUIRED FOR THERMAL ZONE III THERMAL ZONES I & II MAY USE FAN OR WINDOW W/1.5 SQ. FT. OPENABLE GLASS.
5. EF-2= 50 CFM EXHAUST FAN REQUIRED THERMAL ZONE I, II, AND III.
6. EF-3= 100 CFM RANGE EXHAUST FAN, SWITCH AT HOOD.
7. EF-4= WHOLE HOUSE VENTILATION REQUIREMENTS PER DAPIA MANUAL.
8. REFER TO DAPIA MANUAL OR THE MFG. INSTALLATION INSTRUCTIONS FOR PROPER WIRE SIZE AND BREAKER SIZE FOR SPECIFIC APPLIANCE AND MODEL BEING INSTALLED.
9. ALL SMOKE ALARMS TO BE LOCATED ON THE CEILING.
10. CARBON MONOXIDE ALARMS ARE ONLY REQUIRED WHEN HOME HAS EITHER FUEL BURNING APPLIANCES, IS GARAGE READY OR IS BASEMENT READY. REFERENCE DAPIA MANUAL FOR ADDITIONAL INFORMATION.
11. DIMENSIONS SHOWN ON PRINT ARE APPROXIMATE AND TO BE USED ONLY AS A GUIDELINE.

CIRCUIT	CIRCUIT #	WIRE	BREAKER	CIRCUIT	CIRCUIT #	WIRE	BREAKER	CIRCUIT	CIRCUIT #	WIRE	BREAKER
LIGHT/RECEP	1A,1B,3A,3E	14-2	15-SP	WATER HEATER	4A,6B	SEE NOTE #8		BATHROOM	16A	12-2	20-SP
KITCHEN/DINING	2A,2B	12-2	20-SP	RANGE	5B,7A	SEE NOTE #8		OPT G/DISP	9B	SEE NOTE #8	
WASHER	12A	12-2	20-SP	OPT GAS RANGE	15B	SEE NOTE #8		OPT SPA/WP/JAC	11A,B	SEE NOTE #8	
DRYER	5A,7B	SEE NOTE #8		FURNACE	6A,8A,B,10A,B	SEE NOTE #8		FREEZER	N/A	SEE NOTE #8	
				OPT D/WASH	9A	SEE NOTE #8					
				SMOKE ALARM	4B	SEE NOTE #8					

1140 SQ.FT. (STD PLAN "CONDITIONED")
 N/A SQ.FT. (W/OPT. PORCH/RECESS "CONDITIONED")

CMH MANUFACTURING	Model #: ANN16763D	Drawing #:
	Date: 2/23/22	Scale: NTS
Product Designer: E HARDWICK		16'x76' Anniversary Splash
ELECTRICAL PLAN-06		