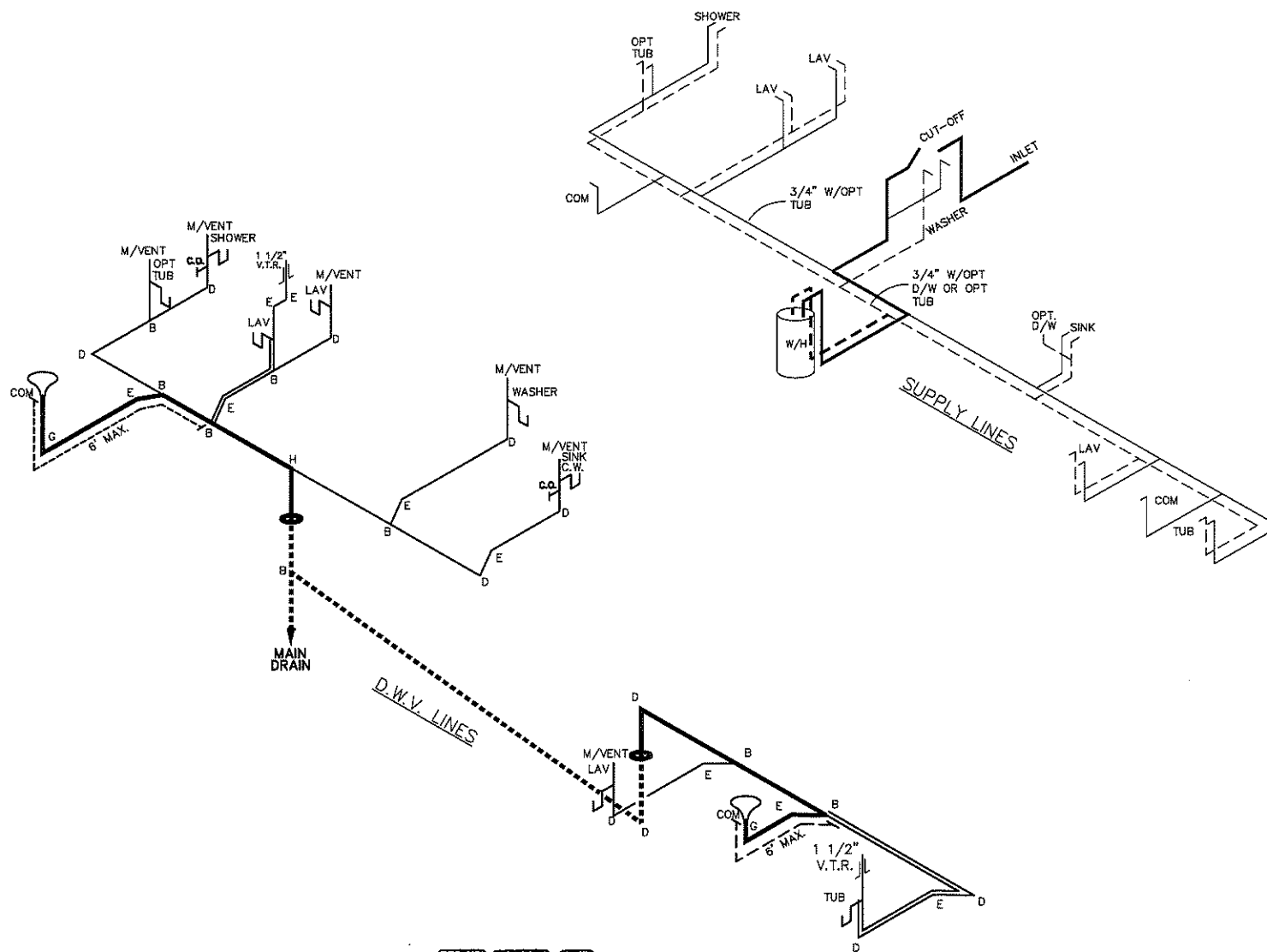


DASHED LINES INDICATE HOT WATER
SOLID LINES INDICATE COLD WATER

———— = 3/4"
———— = 1/2"



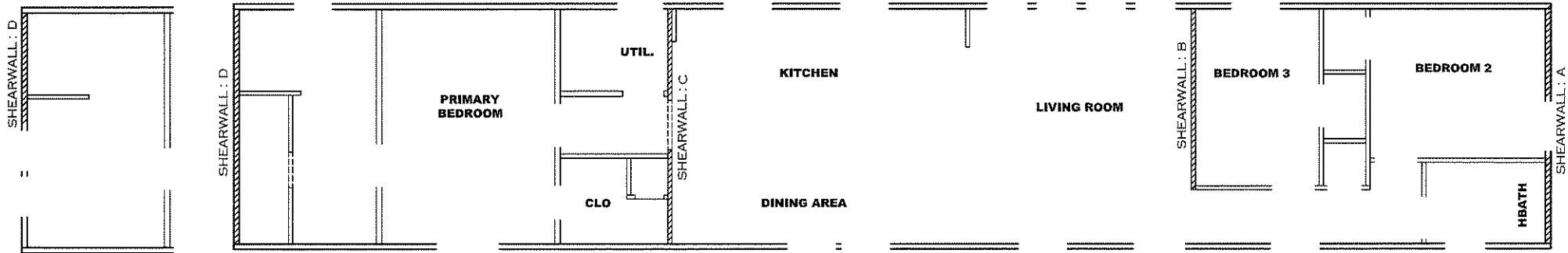
LEGEND	
A	SHORT TURN T-Y
B	LONG TURN T-Y
C	1/4 BEND
D	LONG SWEEP 1/4 BEND
E	45 ELL
F	DBL. SANITARY TEE
G	4x3 CLOSET ELL
H	DOUBLE ELL
I	22 1/2° ELL
J	45° Y
K	LONG TURN STREET ELBOW
L	45 FTG ELL

DWV LINE SIZE CHART	
————	= 3"
————	= 2"
————	= 1 1/2"

APPROVED **HWC** **APPROVED**
 07 APR 2022
 FP-16-3024
 Federal Manufactured
 Home Construction
 And Safety Standards

CMH MANUFACTURING		Model #: SAV16803M	Drawing #:
		Date: 3/29/22	Scale: N/A
Product Designer: E HARDWICK		16' x 80' MAJOR	
D.W.V. and Supply Lines			

1200 SQ.FT. (STD PLAN "CONDITIONED")
 N/A SQ.FT. (W/OPT. PORCH/RECESS "CONDITIONED")



Model # 37s132 Minimum Joist Spacing 16 "

Box Width = 180 " Single wide No Offset Box
 Box Length = 80 ft. 95.5" 12" MIN. IBEAM No Clerestory
 No Skylights No Origami Dormer
 No Porches No Sunken Floor
 Joist Size = #2 spf 2x6 Lags 9Mx3" No Parapet Roof

Model # 37s132-OPT Minimum Joist Spacing 16 "

Box Width = 180 " Single wide No Offset Box
 Box Length = 80 ft. 95.5" 12" MIN. IBEAM No Clerestory
 No Skylights No Origami Dormer
 No Porches No Sunken Floor
 Joist Size = #2 spf 2x6 Lags 9Mx3" No Parapet Roof

Version R13.19

Wind Zone 1 Standard Roof Ceiling board only [152 plf] Chords: 2x4 SPF Stud Top Plate & 1x3 SPF Rail. Each spliced w/2x4 MCP. 96 inch sidewall

Shearwall	Dist./ Hitch	Length	PLF	# of Joists	Lags	Notes	SW1/SW2
A	0'	135.5"	162	2	1/1	Split Shearwall	67.75/67.7t
B	21.71'	120"	162	2	2/1		
C	53.5'	136"	162	2	2/2	Split Shearwall	67/69
D	80'	60"	162	2	1/1		

Wind Zone 2 Standard Roof (3/8" sheathing only with 15 gax 1.5" at 5"/10" oc. (197 plf) Chords: 2x4 SPF Stud Top Plate & 1x3 SPF Rail. Each spliced w/2x4 MCP. 96 inch sidewall

Shearwall	Dist./ Hitch	Length	PLF	# of Joists	Lags	Notes	SW1/SW2
A	0'	135.5"	162	2	2/2	Split Shearwall	67.75/67.7t
B	21.71'	120"	425	3	4/1		
C	53.5'	136"	425	3	4/4	Split Shearwall	67/69
D	80'	156"	162	2	2/1		

Wind Zone 3 Standard Roof (3/8" & ceiling with 15 gax 1.5" at 5"/10" oc. (267 plf) Chords: 2x4 SPF Stud Top Plate & 1x3 SPF Rail. Each spliced w/2x4 MCP. 96 inch sidewall

Shearwall	Dist./ Hitch	Length	PLF	# of Joists	Lags	Notes	SW1/SW2
A	0'	135.5"	425	6	4/4	Split Shearwall	67.75/67.7t
B	21.71'	120"	515	4	5/2		
C	53.5'	136"	515	5	5/5	Split Shearwall	67/69
D	80'	Full	425	2	5/5		

Wind Zone 1 Standard Roof (3/8" sheathing only with 15 gax 1.5" at 5"/10" oc. (197 plf) Chords: 2x4 SPF #3 Top Plate spliced w/ 3x4 MCP & 1x6 SPF Rail spliced w/ 96 inch sidewall

Shearwall	Dist./ Hitch	Length	PLF	# of Joists	Lags	Notes	SW1/SW2
A	0'	135.5"	425	6	4/4	Split Shearwall	67.75/67.7t
D	80'	Full	425	2	5/5		

Version R13.19
Wind Zone 1 Standard Roof Ceiling board only [152 plf] Chords: 2x4 SPF Stud Top Plate & 1x3 SPF Rail. Each spliced w/2x4 MCP. 96 inch sidewall

Shearwall	Dist./ Hitch	Length	PLF	# of Joists	Lags	Notes	SW1/SW2
A	0'	135.5"	162	2	1/1	Split Shearwall	67.75/67.7t
B	21.71'	120"	162	2	2/1		
C	53.5'	136"	162	2	2/2	Split Shearwall	67/69
D	80'	60"	162	2	1/1		

Wind Zone 2 Standard Roof (3/8" sheathing only with 15 gax 1.5" at 5"/10" oc. (197 plf) Chords: 2x4 SPF Stud Top Plate & 1x3 SPF Rail. Each spliced w/2x4 MCP. 96 inch sidewall

Shearwall	Dist./ Hitch	Length	PLF	# of Joists	Lags	Notes	SW1/SW2
A	0'	135.5"	162	2	2/2	Split Shearwall	67.75/67.7t
B	21.71'	120"	425	3	4/1		
C	53.5'	136"	425	3	4/4	Split Shearwall	67/69
D	80'	60"	425	8	2/1		

Wind Zone 3 Standard Roof (3/8" & ceiling with 15 gax 1.5" at 5"/10" oc. (267 plf) Chords: 2x4 SPF Stud Top Plate & 1x3 SPF Rail. Each spliced w/2x4 MCP. 96 inch sidewall

Shearwall	Dist./ Hitch	Length	PLF	# of Joists	Lags	Notes	SW1/SW2
A	0'	135.5"	425	6	4/4	Split Shearwall	67.75/67.7t
B	21.71'	120"	515	4	5/2		
C	53.5'	136"	515	5	5/5	Split Shearwall	67/69
D	80'	72"	425	9	2/1		

Wind Zone 1 Standard Roof (3/8" sheathing only with 15 gax 1.5" at 5"/10" oc. (197 plf) Chords: 2x4 SPF #3 Top Plate spliced w/ 3x4 MCP & 1x6 SPF Rail spliced w/ 96 inch sidewall

Shearwall	Dist./ Hitch	Length	PLF	# of Joists	Lags	Notes	SW1/SW2
A	0'	135.5"	425	6	4/4	Split Shearwall	67.75/67.7t
D	80'	68"	425	9	2/1		

APPROVED

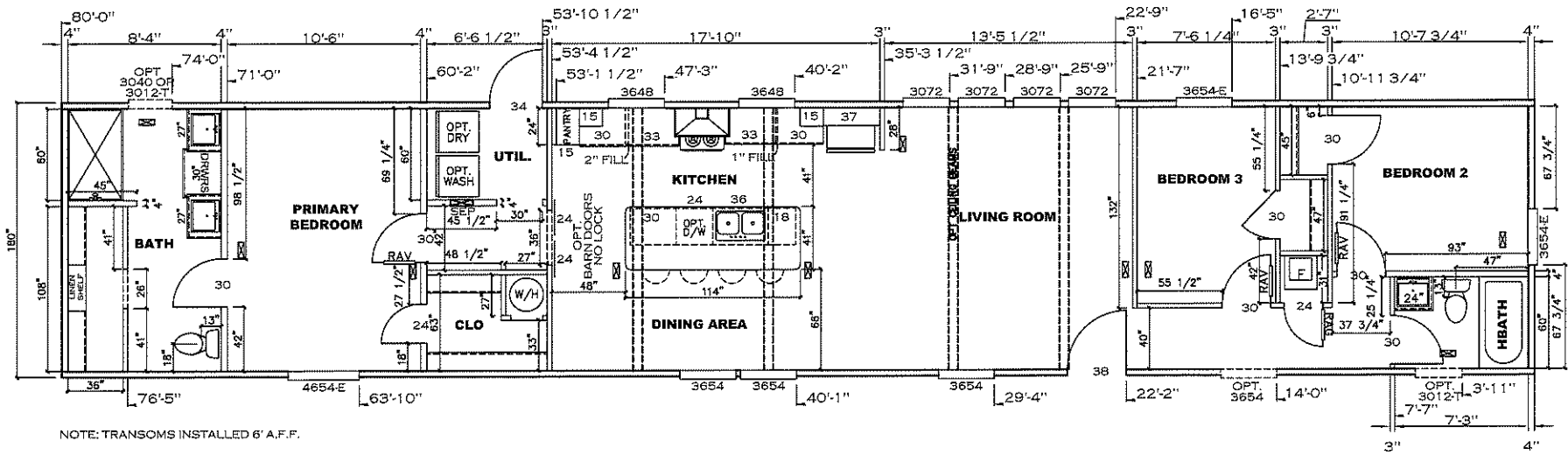
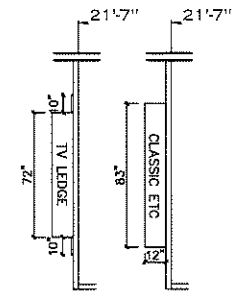
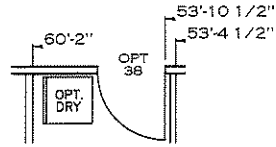
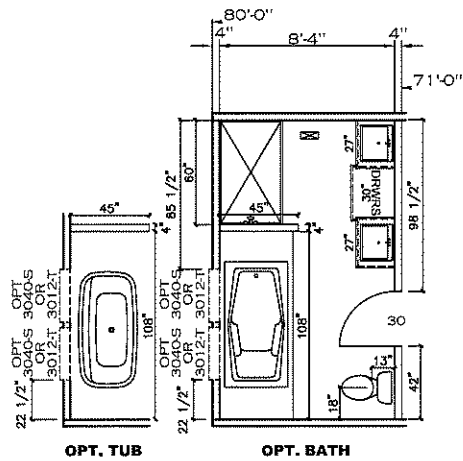
APPROVED

07 APR 2022
 FP-16-3024
 Federal Manufactured Home Construction And Safety Standards

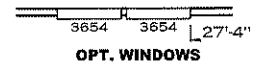
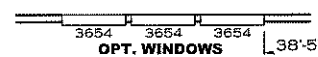
1200 SQ.FT. (STD PLAN "CONDITIONED")
 N/A SQ.FT. (W/OPT. PORCH/RECESS "CONDITIONED")

CMH MANUFACTURING	Model #: SAV16003M	Drawing #:
	Date: 3/29/22	Scale: N/A
Product Designer: E HARDWICK		16' x 80' MAJOR

SHEARWALL PAGE



NOTE: TRANSOMS INSTALLED 6" A.F.F.



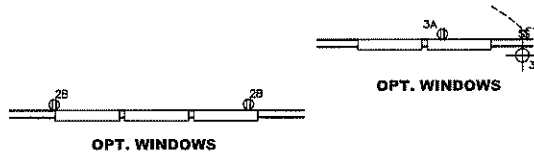
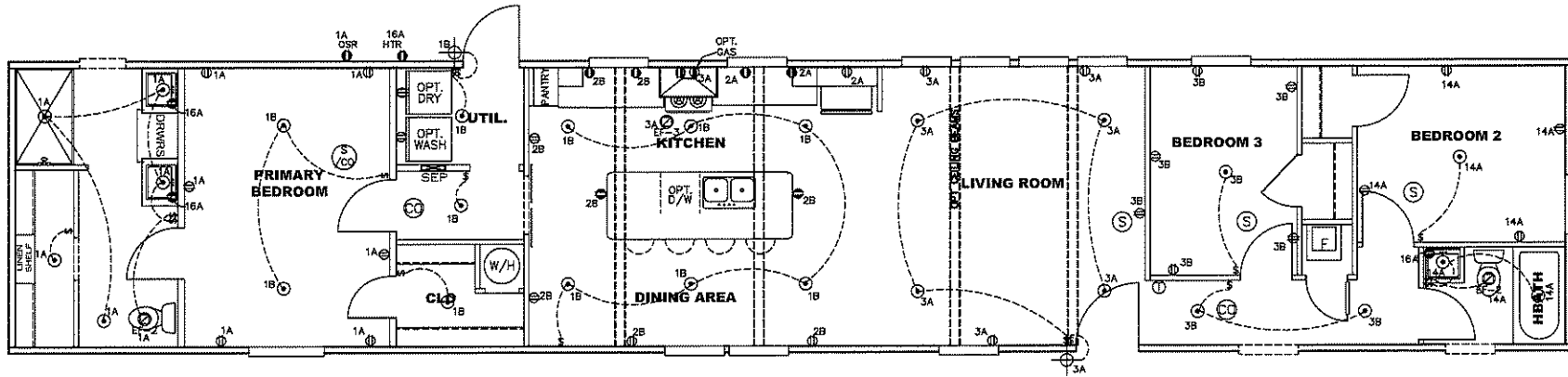
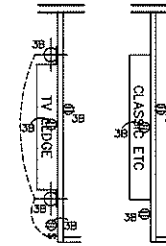
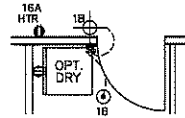
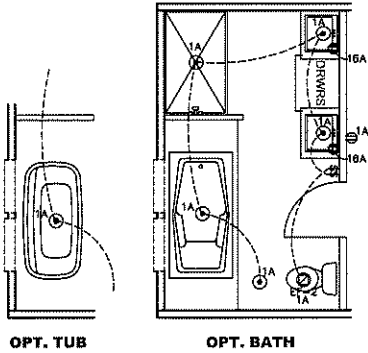
1200 SQ.FT. (STD PLAN "CONDITIONED")
 N/A SQ.FT. (W/OPT. PORCH/RECESS "CONDITIONED")

CMH MANUFACTURING	Model #: SAVI 6803M	Drawing #:
	Date: 3/29/22	Scale: N/A
Product Designer: E HARDWICK	16' x 80' MAJOR	
FLOOR PLAN		

CIRCUIT	CIRCUIT #	WIRE	BREAKER	CIRCUIT	CIRCUIT #	WIRE	BREAKER	CIRCUIT	CIRCUIT #	WIRE	BREAKER
LIGHT/RECEP	1A,1B,3A,3B,14A	14-2	15-SP	WATER HEATER	4A,6B	SEE NOTE #8		BATH/HTR	16A	12-2	20-SP
KITCHEN/DINING	2A,2B	12-2	20-SP	RANGE	5B,7A	SEE NOTE #8		OPT G/DISP	9B	SEE NOTE #8	
WASHER	15B	12-2	20-SP	FURNACE	6A,8A,B,10A,B	SEE NOTE #8		OPT SPA/HP/JAC	11A,B	SEE NOTE #8	
DRYER	5A,7B	SEE NOTE #8		OPT D/WASH	9A	SEE NOTE #8		FREEZER	N/A	SEE NOTE #8	
				SMOKE ALARM	4B	SEE NOTE #8					

NOTES:

- ALL CIRCUITS SHOWN ARE FOR REFERENCE AND MAY BE CHANGED BASED ON OPTIONAL COMPONENTS INSTALLED IN THE HOME.
- REFER TO DAPIA MANUAL FOR SYMBOL CHART.
- EITHER LIGHT OR RECEPTACLE MUST CONNECT TO SWITCH.
- EF-1= 50 CFM EXHAUST FAN REQUIRED FOR THERMAL ZONE III THERMAL ZONES I & II MAY USE FAN OR WINDOW W/1.5 SQ. FT. OPENABLE GLASS.
- EF-2= 50 CFM EXHAUST FAN REQUIRED THERMAL ZONE I, II, AND III.
- EF-3= 100 CFM RANGE EXHAUST FAN, SWITCH AT HOOD.
- EF-4= WHOLE HOUSE VENTILATION REQUIREMENTS PER DAPIA MANUAL.
- REFER TO DAPIA MANUAL OR THE MFG. INSTALLATION INSTRUCTIONS FOR PROPER WIRE SIZE AND BREAKER SIZE FOR SPECIFIC APPLIANCE AND MODEL BEING INSTALLED.
- ALL SMOKE ALARMS TO BE LOCATED ON THE CEILING.
- CARBON MONOXIDE ALARMS ARE ONLY REQUIRED WHEN HOME HAS EITHER FUEL BURNING APPLIANCES, IS GARAGE READY OR IS BASEMENT READY. REFERENCE DAPIA MANUAL FOR ADDITIONAL INFORMATION.
- DIMENSIONS SHOWN ON PRINT ARE APPROXIMATE AND TO BE USED ONLY AS A GUIDELINE.



APPROVED **HWG** **APPROVED**
 07 APR 2022
 FP-16-3024
 Federal Manufactured
 Home Construction
 And Safety Standards

1200 SQ.FT. (STD PLAN "CONDITIONED")
 N/A SQ.FT. (W/OPT. PORCH/RECESS "CONDITIONED")

CMH MANUFACTURING	Model #: 5AV16803M	Drawing #:
	Date: 3/29/22	Scale: N/A
Product Designer: E HARDWICK	16' x 80' MAJOR	
ELECTRICAL PLAN-06		

CMH MANUFACTURING, INC.

Home Office
5000 Clayton Road, Maryville, TN 37804
PH: 865.380.3000 FAX: 865.380.3781

APPROVAL STAMP

TITLE

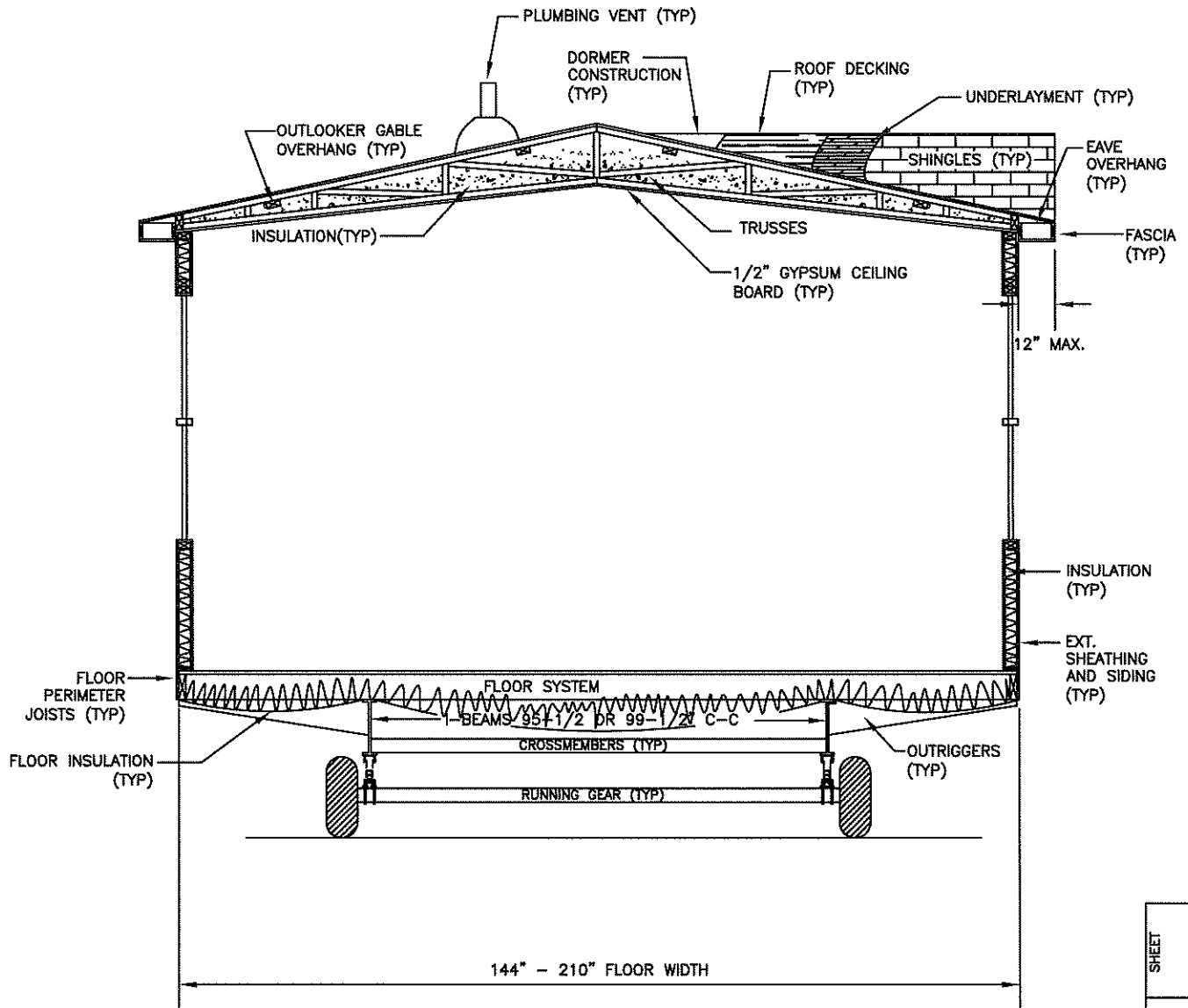
SINGLE WIDE
CROSS-SECTION

BY
JGM

DATE
12/03/14

CHECKED

DATE



CROSS-SECTION^{NTS}

SHEET

REV

XS-1.02

DWG NO.