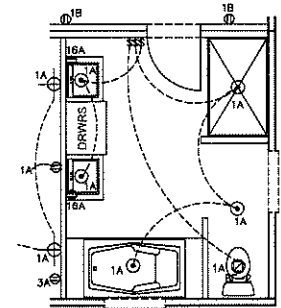
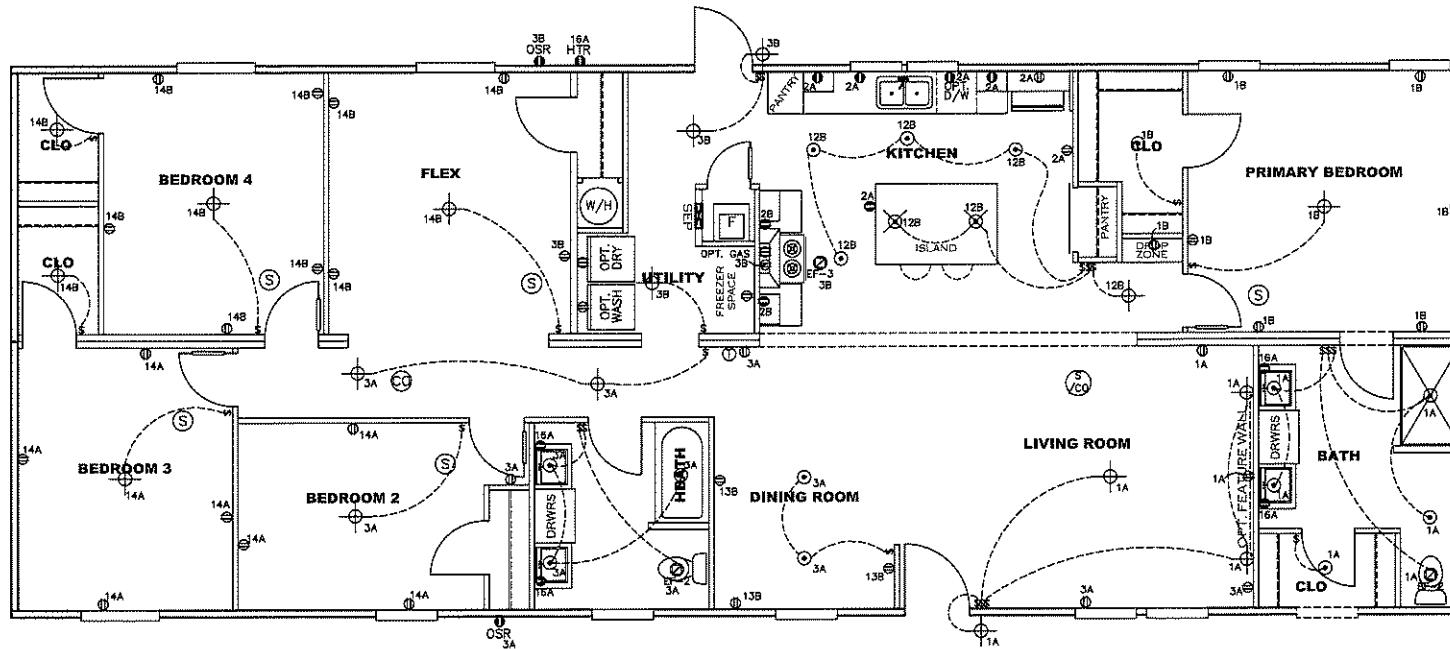
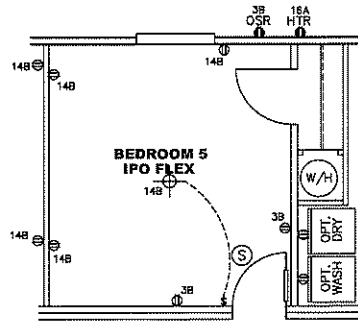
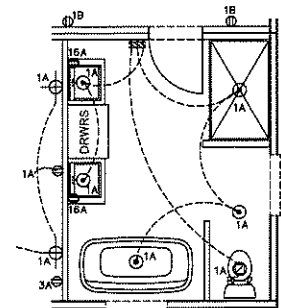


NOTES:

1. ALL CIRCUITS SHOWN ARE FOR REFERENCE AND MAY BE CHANGED BASED ON OPTIONAL COMPONENTS INSTALLED IN THE HOME.
2. REFER TO DAPIA MANUAL FOR SYMBOL CHART.
3. EITHER LIGHT OR RECEPTACLE MUST CONNECT TO SWITCH.
4. EF-1= 50 CFM EXHAUST FAN REQUIRED FOR THERMAL ZONE III THERMAL ZONES I & II MAY USE FAN OR WINDOW W/1.5 SQ. FT. OPENABLE GLASS.
5. EF-2= 50 CFM EXHAUST FAN REQUIRED THERMAL ZONE I, II, AND III.
6. EF-3= 100 CFM RANGE EXHAUST FAN, SWITCH AT HOOD.
7. EF-4= WHOLE HOUSE VENTILATION REQUIREMENTS PER DAPIA MANUAL.
8. REFER TO DAPIA MANUAL OR THE MFG. INSTALLATION INSTRUCTIONS FOR PROPER WIRE SIZE AND BREAKER SIZE FOR SPECIFIC APPLIANCE AND MODEL BEING INSTALLED.
9. ALL SMOKE ALARMS TO BE LOCATED ON THE CEILING.
10. CARBON MONOXIDE ALARMS ARE ONLY REQUIRED WHEN HOME HAS EITHER FUEL BURNING APPLIANCES, IS GARAGE READY OR IS BASEMENT READY. REFERENCE DAPIA MANUAL FOR ADDITIONAL INFORMATION.
11. DIMENSIONS SHOWN ON PRINT ARE APPROXIMATE AND TO BE USED ONLY AS A GUIDELINE.

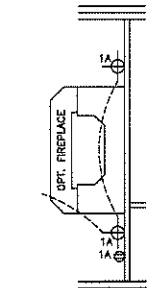


OPT BATH 2



OPT BATH 1

OPT.



OPT FIREPLACE

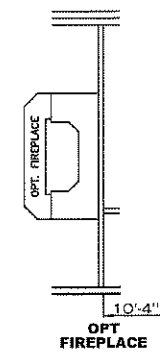
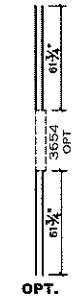
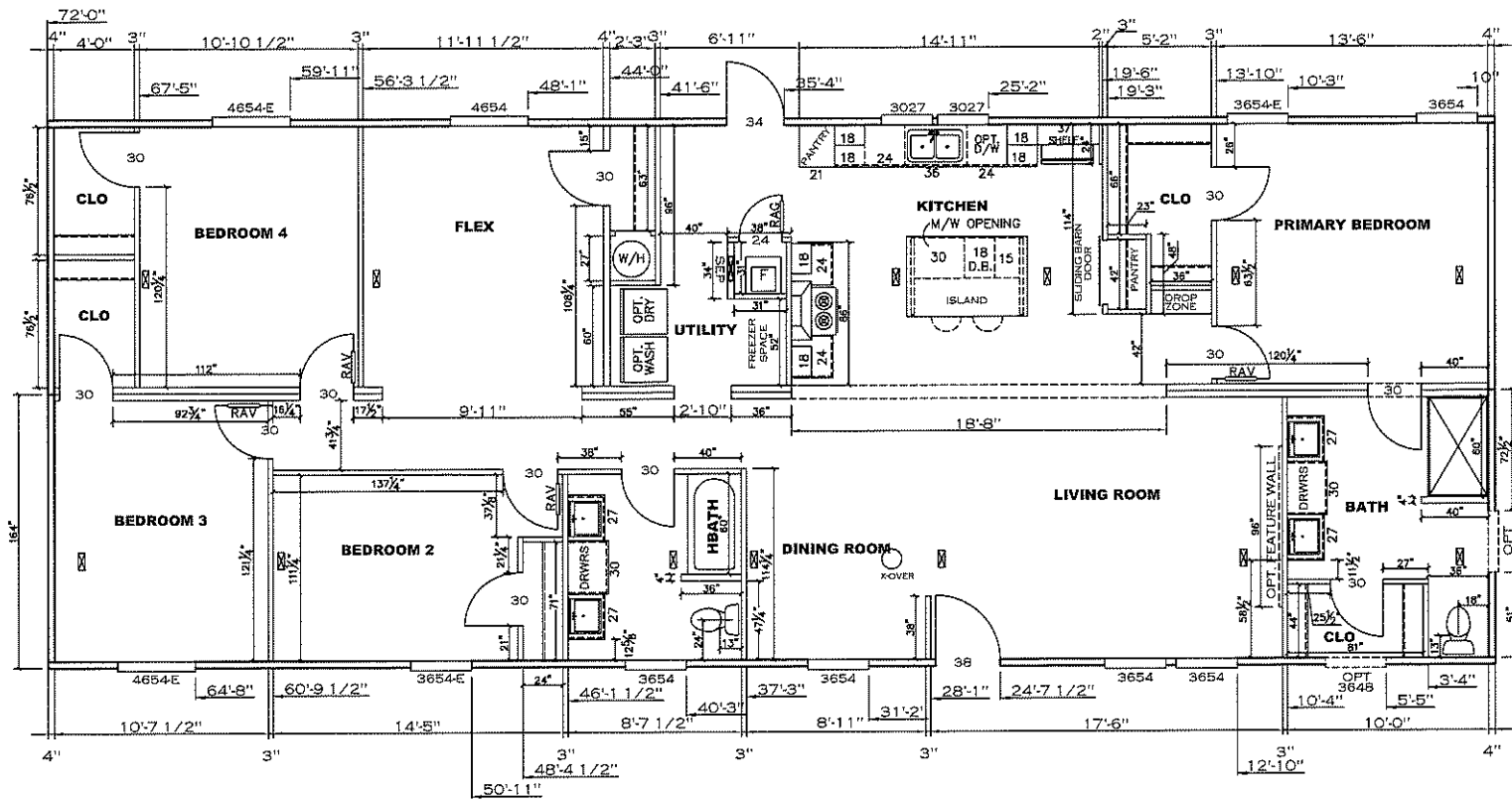
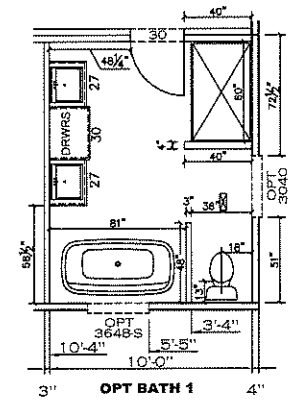
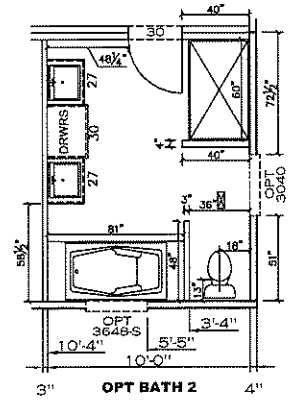
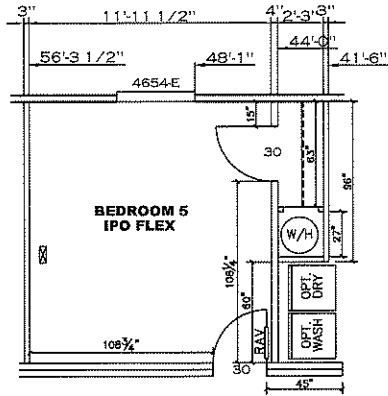
CIRCUIT	CIRCUIT #	WIRE	BREAKER	CIRCUIT	CIRCUIT #	WIRE	BREAKER	CIRCUIT	CIRCUIT #	WIRE	BREAKER
LIGHT/RECEP	1A,B,3A,B,14A,B,12B	14-2	15-SP	WATER HEATER	4A,6B	SEE NOTE #8		BATHROOM	16 A	12-2	20-SP
KITCHEN/DINING	2A,2B,13B	12-2	20-SP	RANGE	5B,7A	SEE NOTE #8		OPT G/DISP	9B	SEE NOTE #8	
WASHER	12A	12-2	20-SP	FURNACE	6A,8A,B,10A,B	SEE NOTE #8		OPT SPA/MP/JAC	11A,B	SEE NOTE #8	
DRYER	5A,7B	SEE NOTE #8		OPT D/WASH	9A	SEE NOTE #8		FREEZER	13A	SEE NOTE #8	
				SMOKE ALARM	4B	SEE NOTE #8					

APPROVED **HWC** **APPROVED**
 10 JAN 2022
 FP-28-5503
 Federal Manufactured Home Construction And Safety Standards

1968 SQ.FT. (STD PLAN "CONDITIONED")
 N/A SQ.FT. (W/OPT. PORCH/RECESS "CONDITIONED")

CMH MANUFACTURING	Model #: 15B28724B	Drawing #:
	Date: 12/28/21	Scale: N/A
Product Designer: E HARDWICK		28 X 72 Homestead Breeze

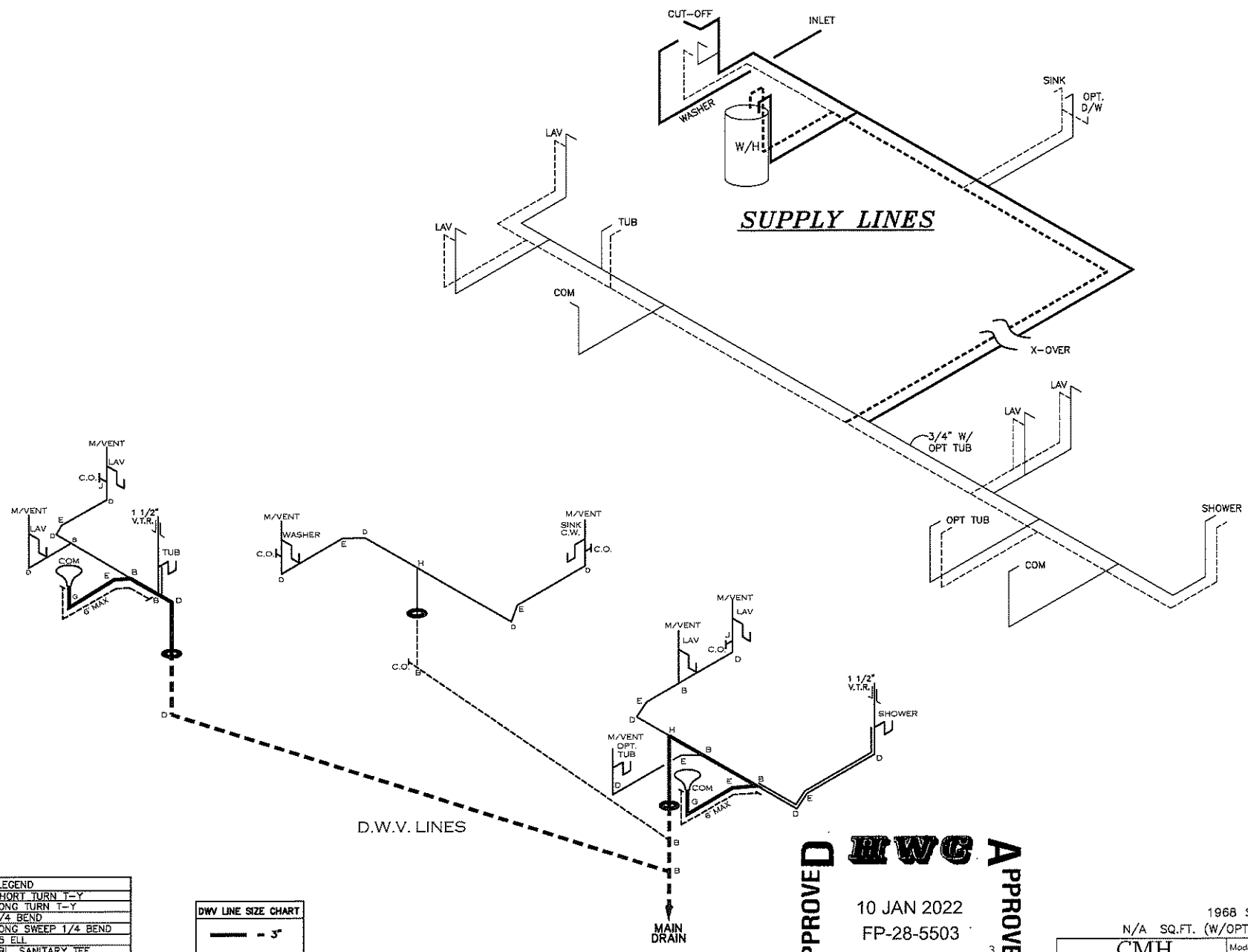
ELECTRICAL PLAN-06



1968 SQ.FT. (STD PLAN "CONDITIONED")		N/A SQ.FT. (W/OPT. PORCH/RECESS "CONDITIONED")	
CMH MANUFACTURING		Model #: 15B20724B	Drawing #: 37M203
		Date: 1/2/2021 Scale: N/A	
Product Designer: E HARDWICK		28 X 72 Homestead Breeze	
FLOOR PLAN			

NOTE:
DASHED LINES INDICATE HOT WATER
SOLID LINES INDICATE COLD WATER

———— = 3/4"
———— = 1/2"



LEGEND	
A	SHORT TURN T-Y
B	LONG TURN T-Y
C	1/4 BEND
D	LONG SWEEP 1/4 BEND
E	45 ELL
F	DBL. SANITARY TEE
G	4x3 CLOSET ELL
H	DOUBLE ELL
I	22 1/2 ELL
J	45° Y
K	LONG TURN STREET ELBOW
L	45 FTG ELL

D.W.V. LINE SIZE CHART	
————	= 3"
————	= 2"
————	= 1 1/2"

APPROVED **RWC** **APPROVED**

10 JAN 2022
FP-28-5503

Federal Manufactured
Home Construction
And Safety Standards

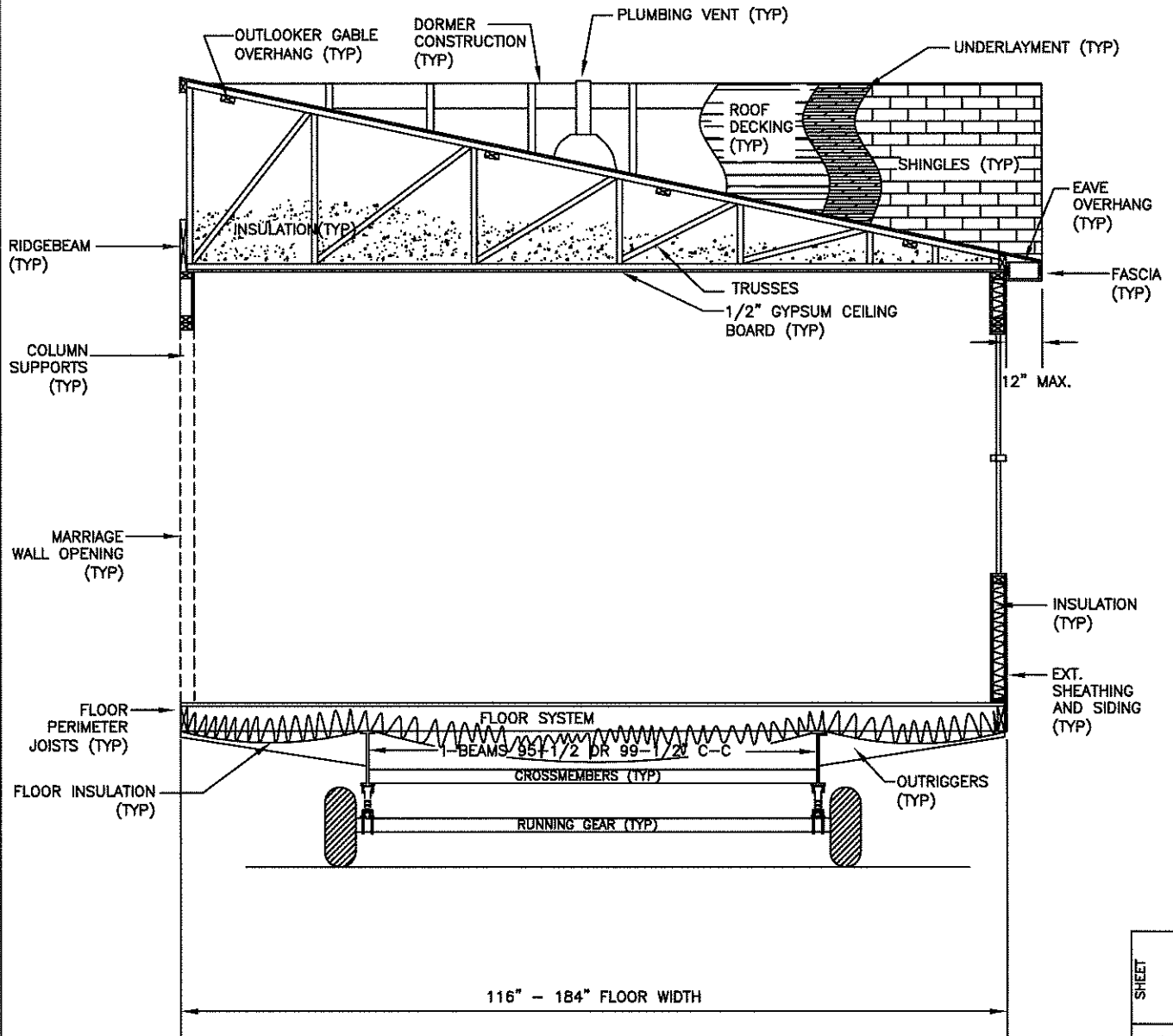
1968 SQ.FT. (STD PLAN "CONDITIONED")	
N/A SQ.FT. (W/OPT. PORCH/RECESS "CONDITIONED")	
CMH MANUFACTURING	Model #: 19B28724B Date: 11/22/2021 Scale: N/A
Product Designer: E. HARDWICK	Drawing #: 37M203
28 X 72 Homestead Breeze	
D.W.V. and Supply Lines	

CMH MANUFACTURING, INC.
 Home Office
 5000 Clayton Road, Maryville, TN 37804
 PH: 865.380.3000 FAX: 865.380.3781

APPROVAL STAMP

TITLE
 DOUBLE WIDE
 CROSS-SECTION

BY	DATE	CHECKED	DATE
JGM	11/19/14		



CROSS-SECTION^{NTS}

DWG NO. XS-1.01
 REV. ---
 SHEET