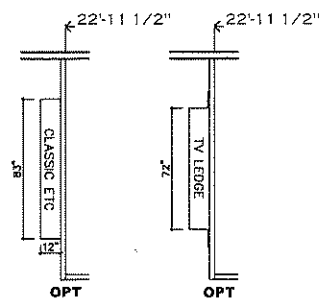
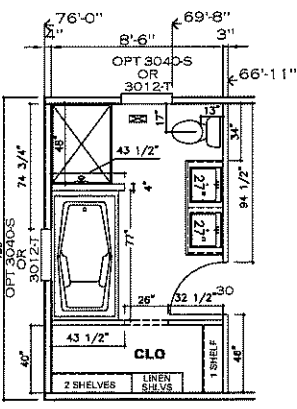
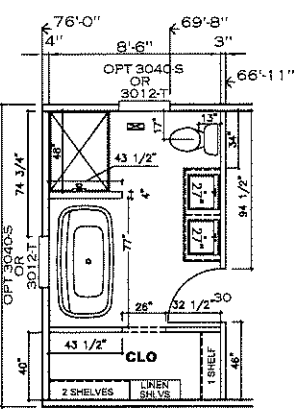
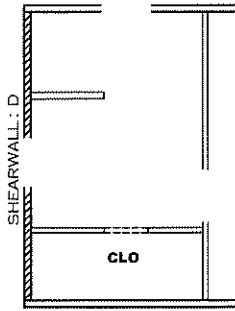


NOTE: TRANSOMS INSTALLED 6" A.F.F.

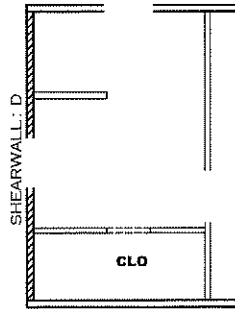


1140 SQ.FT. (STD PLAN "CONDITIONED")  
 N/A SQ.FT. (W/OPT. PORCH/RECESS "CONDITIONED")

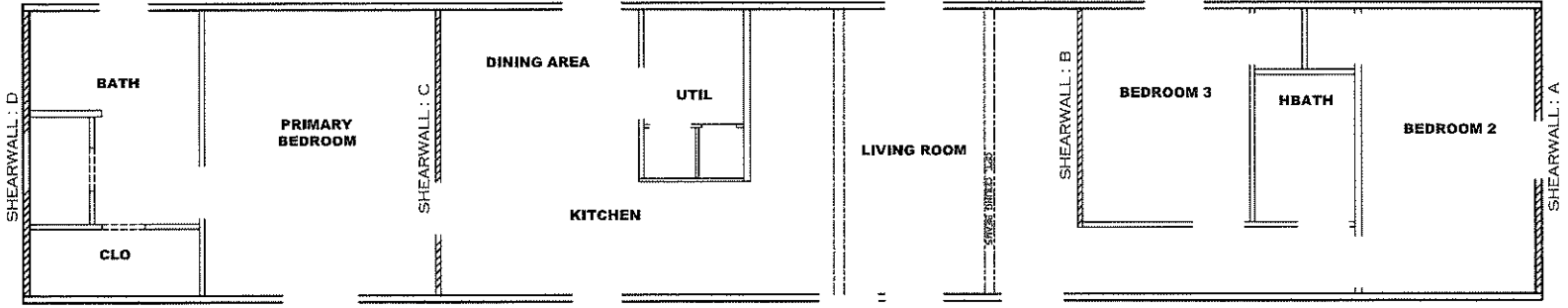
<b>CMH</b> MANUFACTURING	Model #: GRA16763B	Drawing #:
	Date: 3/14/22	Scale: NTS 375131
Product Designer: E HARDWICK		16' x 76' Grand Living 76B
<b>FLOOR PLAN</b>		



BATH OPT. 1



BATH OPT. 2



**Model # 37S131**

Box Width = 180" Single wide No Offset Box  
 Box Length = 76 ft. 95.5" 12" MIN. IBEAM No Clerestory  
 No Skylights No Origami Dormer  
 No Porches No Sunken Floor  
 Joist Size = #2 spf 2x6 Lags 9Mx3" No Parapet Roof

Minimum Joist Spacing 16"

**Version R13.19**

**Wind Zone 1 Standard Roof** Ceiling board only [152 plf] Chords: 2x4 SPF Stud Top Plate & 1x3 SPF Rail. Each spliced w/2x4 MCP. 96 inch sidewall

Shearwall	Dist./ Hitch	Length	PLF	# of Joists	Lags	Notes	SW1/SW2
A	0'	135.5"	162	2	1/1	Split Shearwall	67.75/67.75
B	23.08'	124"	162	2	2/1		
C	55.21'	140.5"	162	2	2/2	Split Shearwall	104.5/36
D	76'	141.5"	162	2	1/1	Split Shearwall	66.75/74.75

**Wind Zone 2 Standard Roof** (3/8" sheathing only with 15 gax 1.5" at 5"/10" oc. (197 plf) Chords: 2x4 SPF Stud Top Plate & 1x3 SPF Rail. Each spliced w/2x4 MCP. 96 inch sidewall

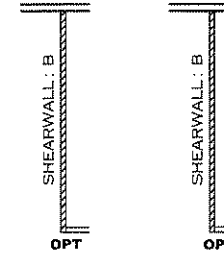
Shearwall	Dist./ Hitch	Length	PLF	# of Joists	Lags	Notes	SW1/SW2	% over
A	0'	135.5"	162	2	2/2	Split Shearwall	67.75/67.75	0.37
B	23.08'	124"	425	3	4/1			
C	55.21'	140.5"	425	5	4/4	Split Shearwall	104.5/36	
D	76'	141.5"	162	2	2/2	Split Shearwall	66.75/74.75	

**Wind Zone 3 Standard Roof** (3/8" & ceiling with 15 gax 1.5" at 5"/10" oc. (267 plf) Chords: 2x4 SPF Stud Top Plate & 1x3 SPF Rail. Each spliced w/2x4 MCP. 96 inch sidewall

Shearwall	Dist./ Hitch	Length	PLF	# of Joists	Lags	Notes	SW1/SW2
A	0'	135.5"	425	6	4/4	Split Shearwall	67.75/67.75
B	23.08'	124"	515	4	5/2		
C	55.21'	140.5"	515	6	5/5	Split Shearwall	104.5/36
D	76'	141.5"	425	6	4/4	Split Shearwall	66.75/74.75

**Wind Zone 1 Standard Roof** (3/8" sheathing only with 15 gax 1.5" at 5"/10" oc. (197 plf) Chords: 2x4 SPF #3 Top Plate spliced w/ 12" glue block & 1x6 SPF Rail. 96 inch sidewall

Shearwall	Dist./ Hitch	Length	PLF	# of Joists	Lags	Notes	SW1/SW2
A	0'	135.5"	425	6	4/4	Split Shearwall	67.75/67.75
D	76'	141.5"	425	6	4/4	Split Shearwall	66.75/74.75

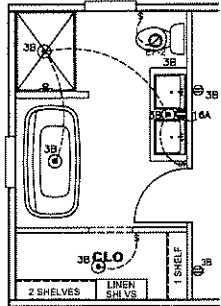
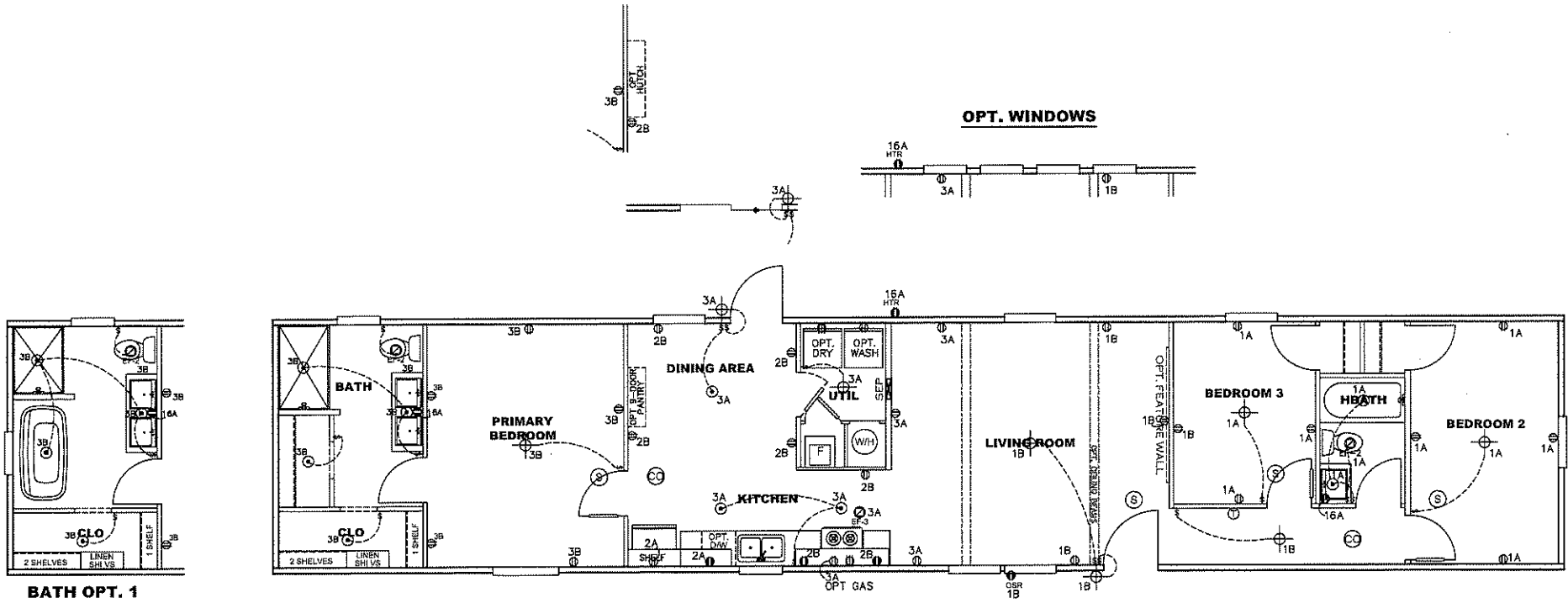


**APPROVED** **HWG** **APPROVED**

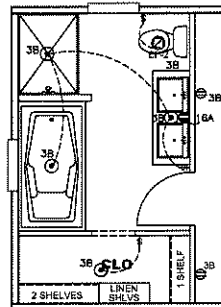
28 MAR 2022  
 FP-16-3023  
 Federal Manufactured Home Construction And Safety Standards

1140 SQ.FT. (STD PLAN "CONDITIONED")		N/A SQ.FT. (W/OPT. PORCH/RECESS "CONDITIONED")	
<b>CMH</b> MANUFACTURING	Model #: GRA16763B	Drawing #: 375131	
Product Designer: E HARDWICK	Date: 3/14/22	Scale: NTS	
<b>SHEARWALL PAGE</b>		16' x 76' Grand Living 76B	

CIRCUIT	CIRCUIT #	WIRE	BREAKER	CIRCUIT	CIRCUIT #	WIRE	BREAKER	CIRCUIT	CIRCUIT #	WIRE	BREAKER
LIGHT/RECEP	1 A, 1 B, 3 A	14-2	15-SP	WATER HEATER	4A, 6B	SEE NOTE #8		BATHROOM	16A	12-2	20-SP
KITCHEN	2A, 2B	12-2	20-SP	RANGE	5B, 7A	SEE NOTE #8		OPT G/DISP	9B	SEE NOTE #8	
WASHER	12A	12-2	20-SP	FURNACE	6A, 8A, B, 10A, B	SEE NOTE #8		OPT SPA/ W/PUAG	11A, B	SEE NOTE #8	
DRYER	5A, 7B	SEE NOTE #8		OPT DWASH	9A	SEE NOTE #8		FREEZER	N. A.	SEE NOTE #8	
				SMOKE ALARM	4B	SEE NOTE #8					



**BATH OPT. 1**

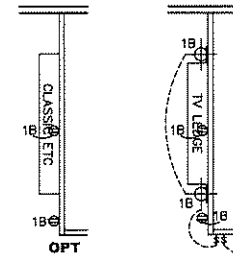


**BATH OPT. 2**

**NOTES:**

1. ALL CIRCUITS SHOWN ARE FOR REFERENCE AND MAY BE CHANGED BASED ON OPTIONAL COMPONENTS INSTALLED IN THE HOME.
2. REFER TO DAPIA MANUAL FOR SYMBOL CHART.
3. EITHER LIGHT OR RECEPTACLE MUST CONNECT TO SWITCH.
4. EF-1= 50 CFM EXHAUST FAN REQUIRED FOR THERMAL ZONE III THERMAL ZONES I & II. MAY USE FAN OR WINDOW W/1.5 SQ. FT. OPENABLE GLASS.
5. EF-2= 50 CFM EXHAUST FAN REQUIRED THERMAL ZONE I, II, AND III.
6. EF-3= 100 CFM RANGE EXHAUST FAN, SWITCH AT HOOD.
7. EF-4= WHOLE HOUSE VENTILATION REQUIREMENTS PER DAPIA MANUAL.
8. REFER TO DAPIA MANUAL OR THE MFG. INSTALLATION INSTRUCTIONS FOR PROPER WIRE SIZE AND BREAKER SIZE FOR SPECIFIC APPLIANCE AND MODEL BEING INSTALLED.
9. ALL SMOKE ALARMS TO BE LOCATED ON THE CEILING.
10. CARBON MONOXIDE ALARMS ARE ONLY REQUIRED WHEN HOME HAS EITHER FUEL BURNING APPLIANCES, IS GARAGE READY OR IS BASEMENT READY. REFERENCE DAPIA MANUAL FOR ADDITIONAL INFORMATION.
11. DIMENSIONS SHOWN ON PRINT ARE APPROXIMATE AND TO BE USED ONLY AS A GUIDELINE.

**APPROVED** **HWC** **APPROVED**  
 28 MAR 2022  
 FP-16-3023  
 Federal Manufactured  
 Home Construction  
 And Safety Standards

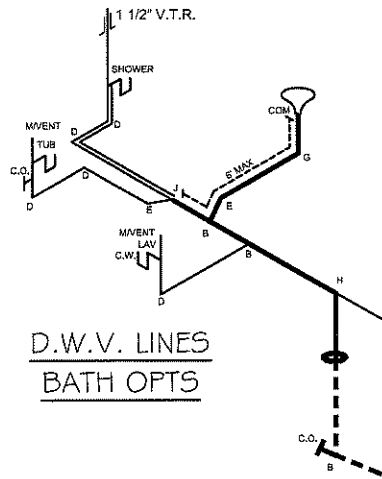


1140 SQ.FT. (STD PLAN "CONDITIONED")  
 N/A SQ.FT. (W/OPT. PORCH/RECESS "CONDITIONED")

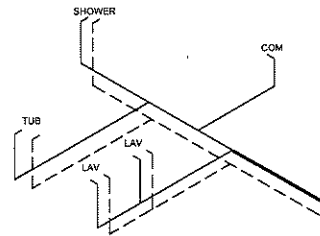
<b>CMH</b> MANUFACTURING	Model #: GRA16763B	Drawing #:
	Date: 3/14/22	Scale: NTS 375131
Product Designer: E. HARDWICK		
16' x 76' Grand Living 76B		
<b>ELECTRICAL PLAN-06</b>		

NOTE: DASHED LINES INDICATE HOT WATER  
SOLID LINES INDICATE COLD WATER

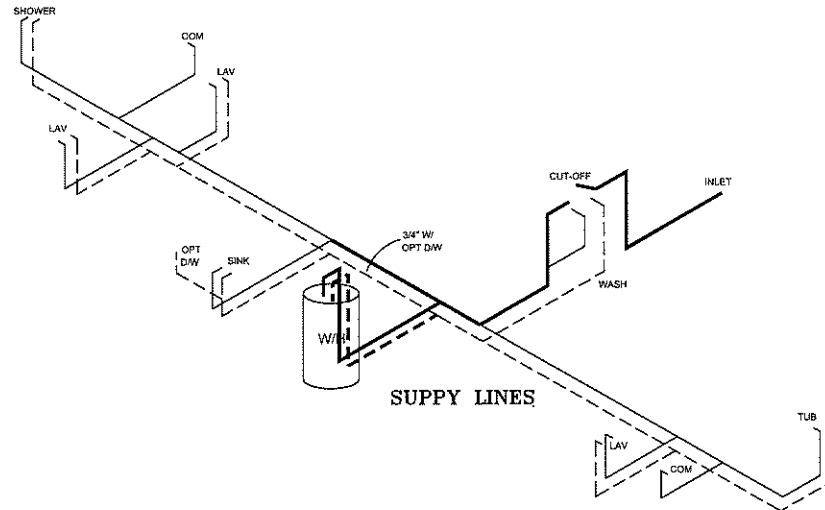
— = 3/4"  
— = 1/2"



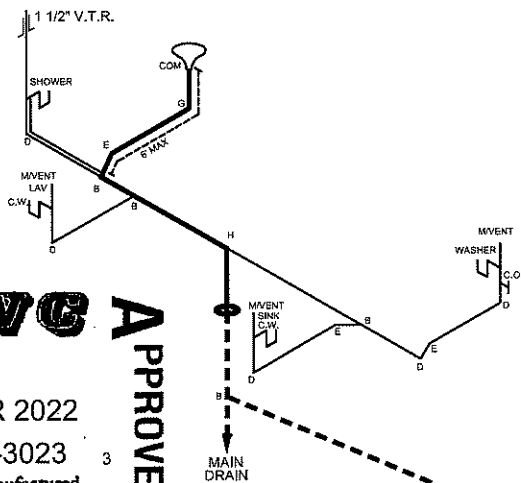
D.W.V. LINES  
BATH OPTS



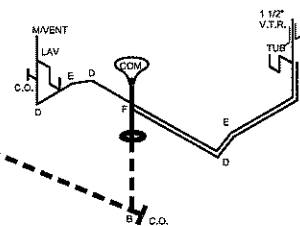
SUPPLY LINES  
BATH OPTS



SUPPLY LINES



D.W.V. LINES



**APPROVED** **RWC** **APPROVED**  
28 MAR 2022  
FP-16-3023  
Federal Manufactured  
Home Construction  
And Safety Standards

LEGEND	
A	SHORT TURN T-Y
B	LONG TURN T-Y
C	1/4 BEND
D	LONG SWEEP 1/4 BEND
E	45 ELL
F	DBL. SANITARY TEE
G	4X3 CLOSET ELL
H	DOUBLE ELL
I	22 1/2 ELL
J	45 Y
K	LONG TURN STREET ELBOW
L	45 FTG ELL

DWV LINE SIZE CHART	
—	= 3"
—	= 2"
—	= 1 1/2"

1140 SQ.FT. (STD PLAN "CONDITIONED")  
N/A SQ.FT. (W/OPT. PORCH/RECESS "CONDITIONED")

<b>CMH</b> MANUFACTURING	Model #: GRA16763B	Drawing #:
	Date: 3/14/22	Scale: NTS 375131
Product Designer: E HARDWICK		16' x 76' Grand Living 76B
<b>D.W.V. and Supply Lines</b>		

CMH MANUFACTURING, INC.  
 Home Office  
 5000 Clayton Road, Maryville, TN 37804  
 PH: 865.380.3000 FAX: 865.380.3781

APPROVAL STAMP

TITLE

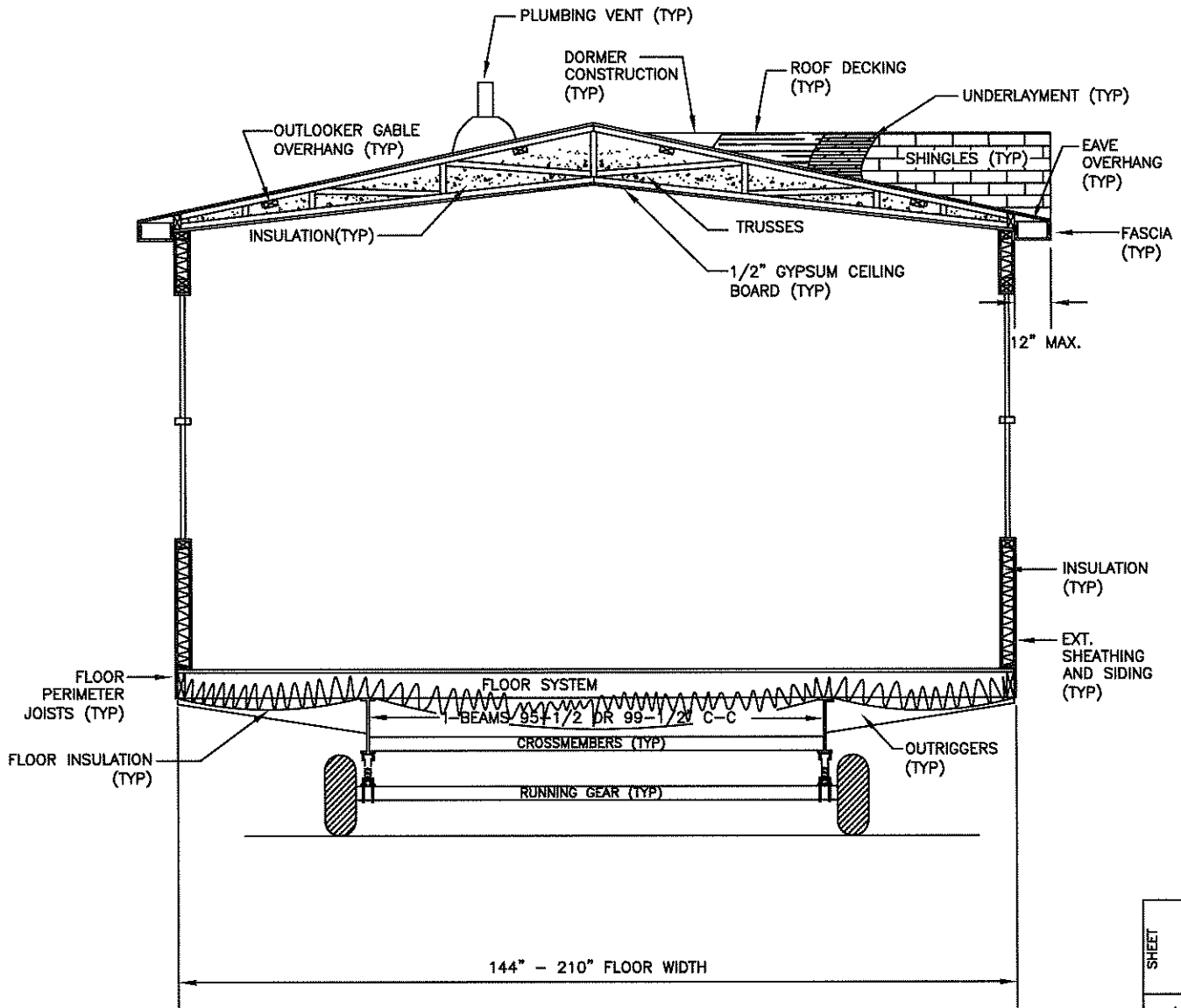
SINGLE WIDE  
 CROSS-SECTION

BY  
 JGM

DATE  
 12/03/14

CHECKED

DATE



144" - 210" FLOOR WIDTH

CROSS-SECTION<sup>NTS</sup>

SHEET

REV

XS-1.02

DWG NO.