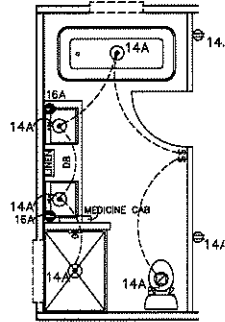
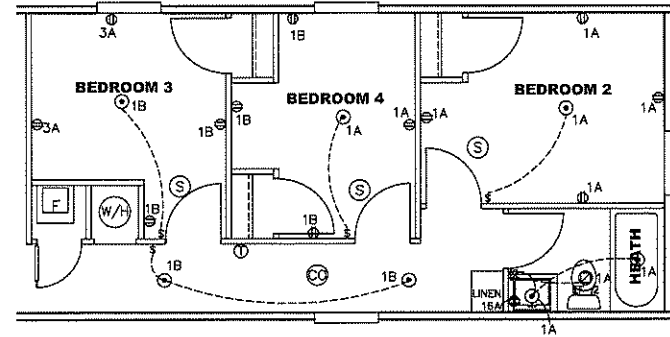


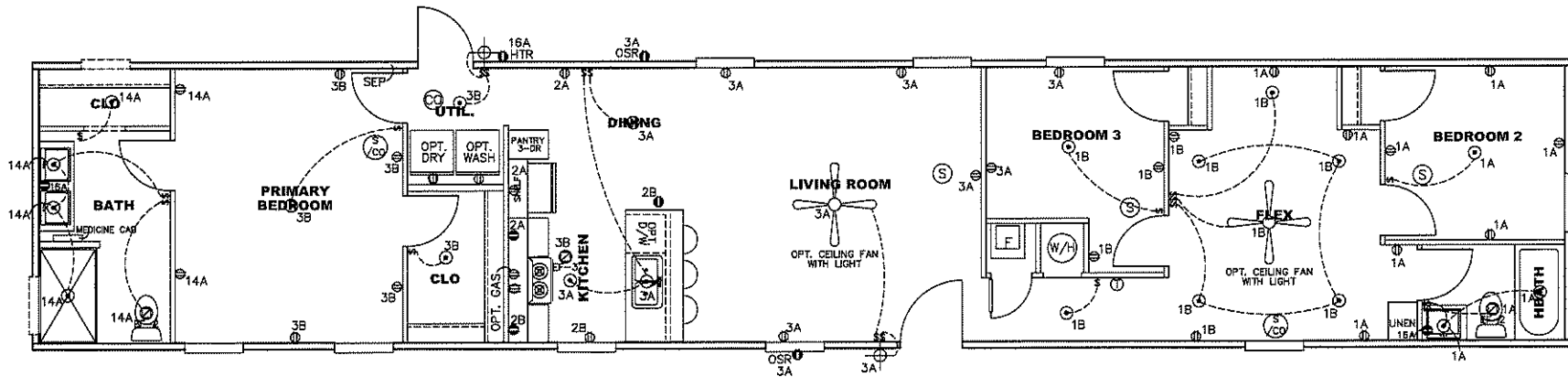
**OPT. BATH 1**



**OPT. BATH 2**



**4 BEDROOM OPT.**



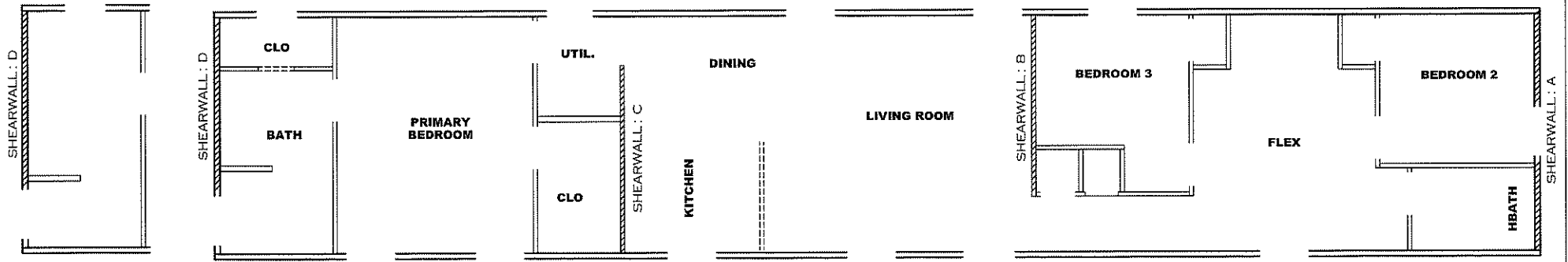
**NOTES:**

1. ALL CIRCUITS SHOWN ARE FOR REFERENCE AND MAY BE CHANGED BASED ON OPTIONAL COMPONENTS INSTALLED IN THE HOME.
2. REFER TO DAPIA MANUAL FOR SYMBOL CHART.
3. EITHER LIGHT OR RECEPTACLE MUST CONNECT TO SWITCH.
4. EF-1= 50 CFM EXHAUST FAN REQUIRED FOR THERMAL ZONE III THERMAL ZONES I & II MAY USE FAN OR WINDOW W/1.5 SQ. FT. OPENABLE GLASS.
5. EF-2= 50 CFM EXHAUST FAN REQUIRED THERMAL ZONE I, II, AND III.
6. EF-3= 100 CFM RANGE EXHAUST FAN, SWITCH AT HOOD.
7. EF-4= WHOLE HOUSE VENTILATION REQUIREMENTS PER DAPIA MANUAL.
8. REFER TO DAPIA MANUAL OR THE MFG. INSTALLATION INSTRUCTIONS FOR PROPER WIRE SIZE AND BREAKER SIZE FOR SPECIFIC APPLIANCE AND MODEL BEING INSTALLED.
9. ALL SMOKE ALARMS TO BE LOCATED ON THE CEILING.
10. CARBON MONOXIDE ALARMS ARE ONLY REQUIRED WHEN HOME HAS EITHER FUEL BURNING APPLIANCES, IS GARAGE READY OR IS BASEMENT READY. REFERENCE DAPIA MANUAL FOR ADDITIONAL INFORMATION.
11. DIMENSIONS SHOWN ON PRINT ARE APPROXIMATE AND TO BE USED ONLY AS A GUIDELINE.

CIRCUIT	CIRCUIT #	WIRE	BREAKER	CIRCUIT	CIRCUIT #	WIRE	BREAKER	CIRCUIT	CIRCUIT #	WIRE	BREAKER
LIGHT/RECEP	1A,1B,3A,3B,14A	14-2	15-SP	WATER HEATER	4A,6B	SEE NOTE #8		BATHROOM	16A	12-2	20-SP
KITCHEN/DINING	2A,2B	12-2	20-SP	RANGE	5B,7A	SEE NOTE #8		OPT G/DISP	9B	SEE NOTE #8	
WASHER	12A	12-2	20-SP	OPT GAS RANGE	15B	SEE NOTE #8		OPT SW/7 W/2A/C	11A,B	SEE NOTE #8	
DRYER	5A,7B	SEE NOTE #8		FURNACE	8A,8A,B,10A,B	SEE NOTE #8		FREEZER	N/A	SEE NOTE #8	
				OPT D/WASH	9A	SEE NOTE #8					
				SMOKE ALARM	4B	SEE NOTE #8					

1200 SQ. FT. (STD PLAN "CONDITIONED")  
 N/A SQ. FT. (W/OPT. PORCH/RECESS "CONDITIONED")

<b>CMH</b> MANUFACTURING	Model #: SAV16803D	Drawing #:
	Date: 1/22/21	Scale: N.T.S. 375125
Product Designer: E HARDWICK		16 X 80 Flex House
<b>ELECTRICAL PLAN-06</b>		



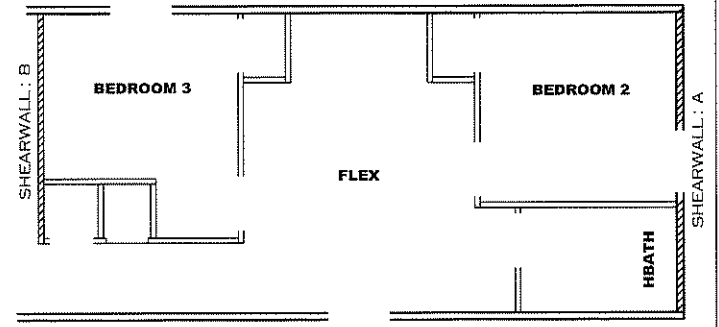
**OPT. BATH 1**

**Model # 37S125**

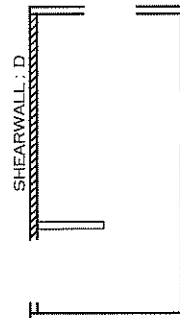
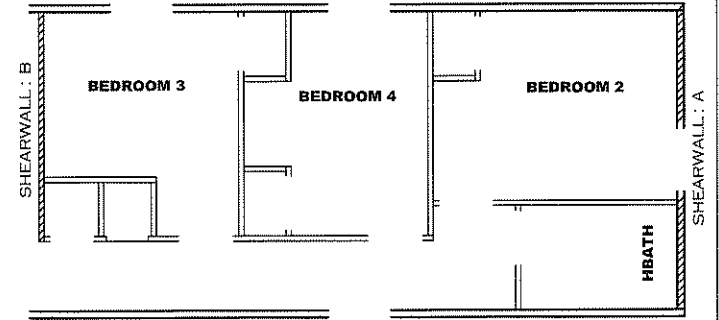
Minimum Joist Spacing 16"

Box Width = 180" Single wide No Offset Box  
 Box Length = 80 ft. 95.5" 12" MIN. IBEAM No Clerestory  
 No Skylights No Origami Dormer  
 No Porches No Sunken Floor  
 Joist Size = #2 spf 2x6 Lags 9Mx3" No Parapet Roof

**Version R13.19**



**4 BEDROOM OPT.**



**OPT. BATH 2**

**Wind Zone 1 Standard Roof** Ceiling board only [152 plf] Chords: 2x4 SPF Stud Top Plate & 1x3 SPF Rail. Each spliced w/2x4 MCP. 96 inch sidewall

Diaphragm Construction:

Shearwall	Dist./ Hitch	Length	PLF	# of Joists	Lags	Notes	SW1/SW2
A	0'	135.5"	162	2	1/1	Split Shearwall	67.75/67.75
B	30.54'	124"	162	2	2/1		
C	55.37'	112"	162	2	2/1		
D	80'	56"	162	2	1/1		

**Wind Zone 2 Standard Roof** (3/8" sheathing only with 15 gax 1.5" at 5"/10" oc. (197 plf) Chords: 2x4 SPF Stud Top Plate & 1x3 SPF Rail. Each spliced w/2x4 MCP. 96 inch sidewall

Diaphragm Construction:

Shearwall	Dist./ Hitch	Length	PLF	# of Joists	Lags	Notes	SW1/SW2
A	0'	135.5"	425	6	4/4	Split Shearwall	67.75/67.75
B	30.54'	124"	425	3	4/1		
C	55.37'	136"	425	2	4/2		
D	80'	120"	425	4	4/3		

**Wind Zone 3 Standard Roof** (3/8" sheathing only with 15 gax 1.5" at 5"/10" oc. (197 plf) Chords: 2x4 SPF Stud Top Plate & 1x3 SPF Rail. Each spliced w/2x4 MCP. 96 inch sidewall

Diaphragm Construction:

Shearwall	Dist./ Hitch	Length	PLF	# of Joists	Lags	Notes	SW1/SW2
A	0'	135.5"	425	6	4/4	Split Shearwall	67.75/67.75
B	30.54'	124"	515	4	5/2		
C	55.37'	136"	425	2	4/2		
D	80'	120"	425	4	4/3		

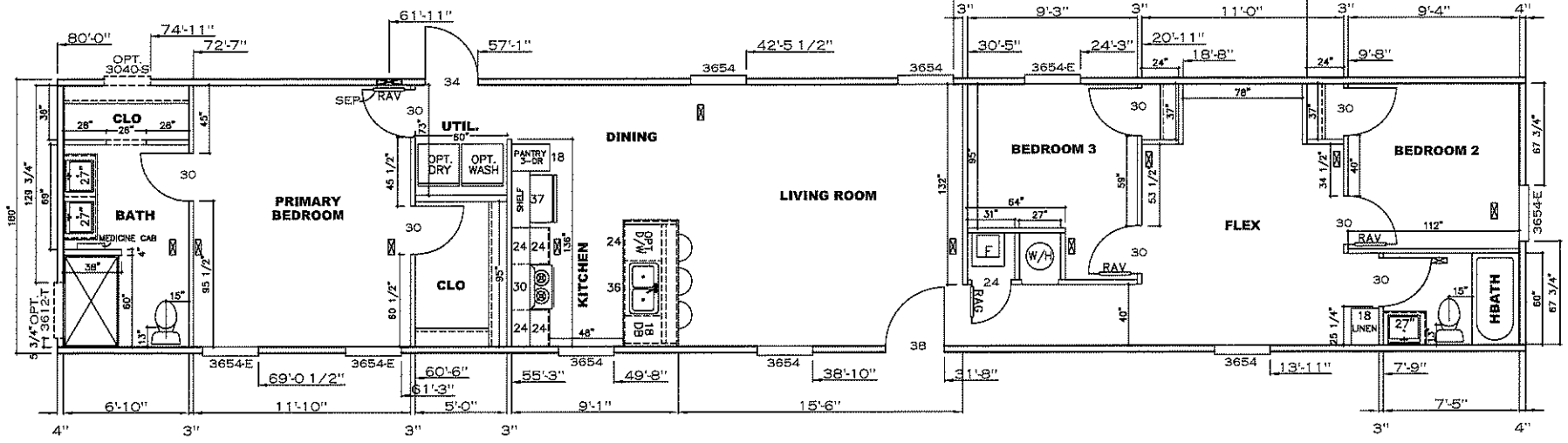
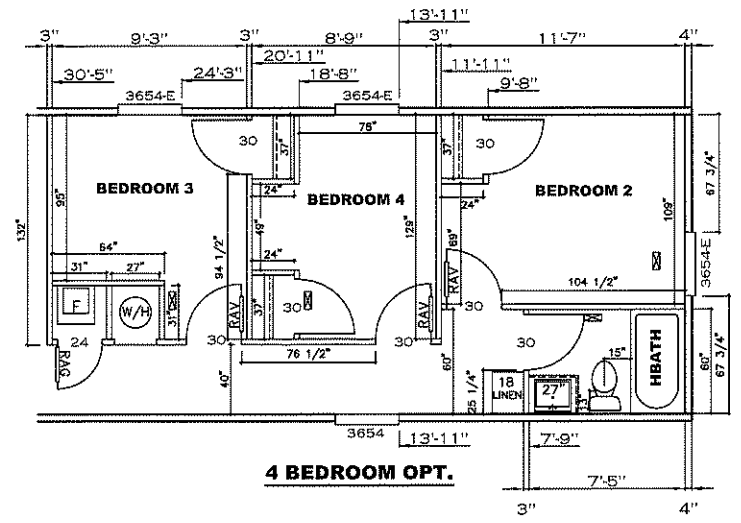
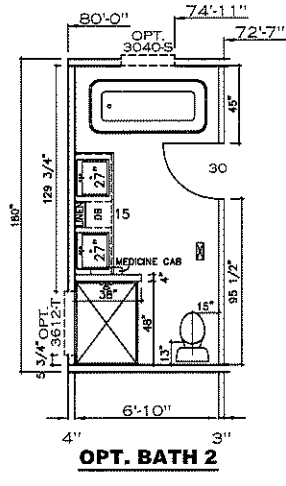
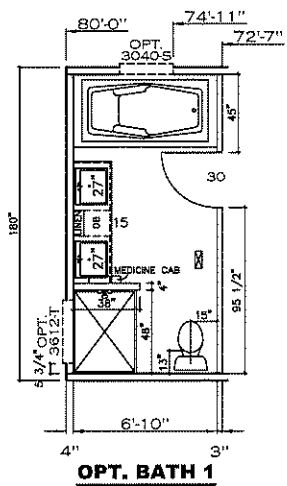
**Wind Zone 1 Standard Roof** (3/8" sheathing only with 15 gax 1.5" at 5"/10" oc. (197 plf) Chords: 2x4 SPF #3 Top Plate spliced w/ 3x4 MCP & 1x6 SPF Rail. Each spliced w/ 96 inch sidewall

Diaphragm Construction:

Shearwall	Dist./ Hitch	Length	PLF	# of Joists	Lags	Notes	SW1/SW2
A	0'	135.5"	425	6	4/4	Split Shearwall	67.75/67.75
D	80'	120"	425	4	4/3		

1200 SQ.FT. (STD PLAN "CONDITIONED")  
 N/A SQ.FT. (W/OPT. PORCH/RECESS "CONDITIONED")

<b>CMH</b> MANUFACTURING Product Designer: E HARDWICK	Model #: SAV16803D	Drawing #:
	Date: 1/21/21	Scale: N.T.S. 375125
16 X 80 Flex House		
<b>SHEARWALL PAGE</b>		



1200 SQ.FT. (STD PLAN "CONDITIONED")  
 N/A SQ.FT. (W/OPT. PORCH/RECESS "CONDITIONED")

<b>CMH</b> MANUFACTURING	Model #: SAV16803D	Drawing #:
	Date: 1/22/21	Scale: N.T.S. 375125
Product Designer: E HARDWICK		16 X 80 Flex House
<b>FLOOR PLAN</b>		

NOTE:  
DASHED LINES INDICATE HOT WATER  
SOLID LINES INDICATE COLD WATER

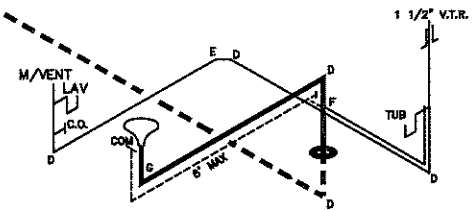
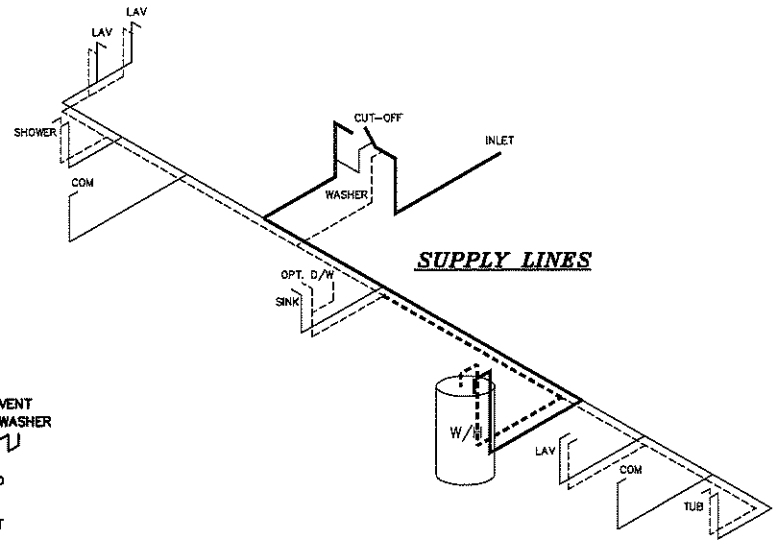
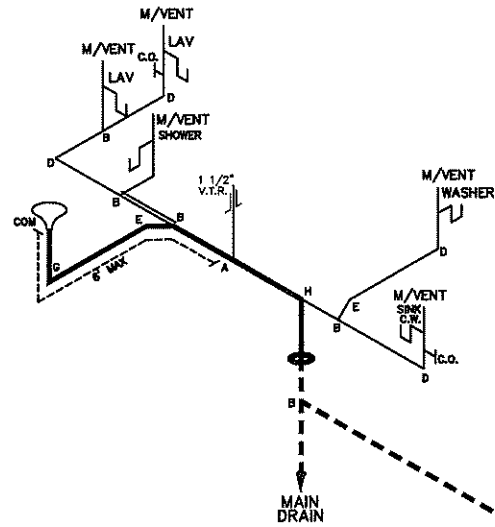
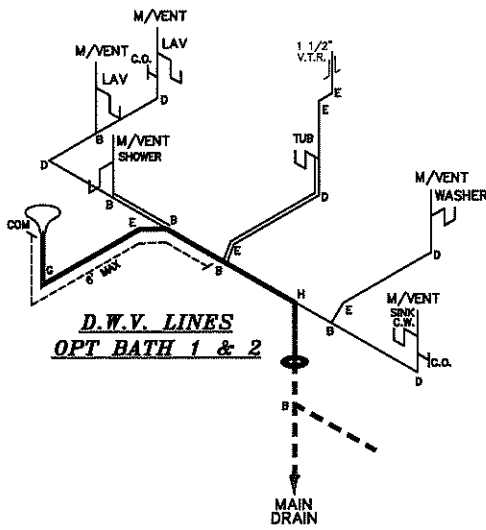
———— = 3/4"  
———— = 1/2"

**SUPPLY LINES**  
**OPT BATH 1 & 2**

**SUPPLY LINES**

**D.W.V. LINES**  
**OPT BATH 1 & 2**

**D.W.V. LINES**



LEGEND	
A	SHORT TURN T-Y
B	LONG TURN T-Y
C	1/4 BEND
D	LONG SWEEP 1/4 BEND
E	45 ELL
F	DBL. SANITARY TEE
G	4x3 CLOSET ELL
H	3" DOUBLE ELL
I	22 1/2" ELL
J	45° Y
K	LONG TURN STREET ELBOW
L	45 FTG ELL

DWV LINE SIZE CHART	
————	= 3"
————	= 2"
————	= 1 1/2"

1200 SQ.FT. (STD PLAN "CONDITIONED")  
N/A SQ.FT. (W/OPT. PORCH/RECESS "CONDITIONED")

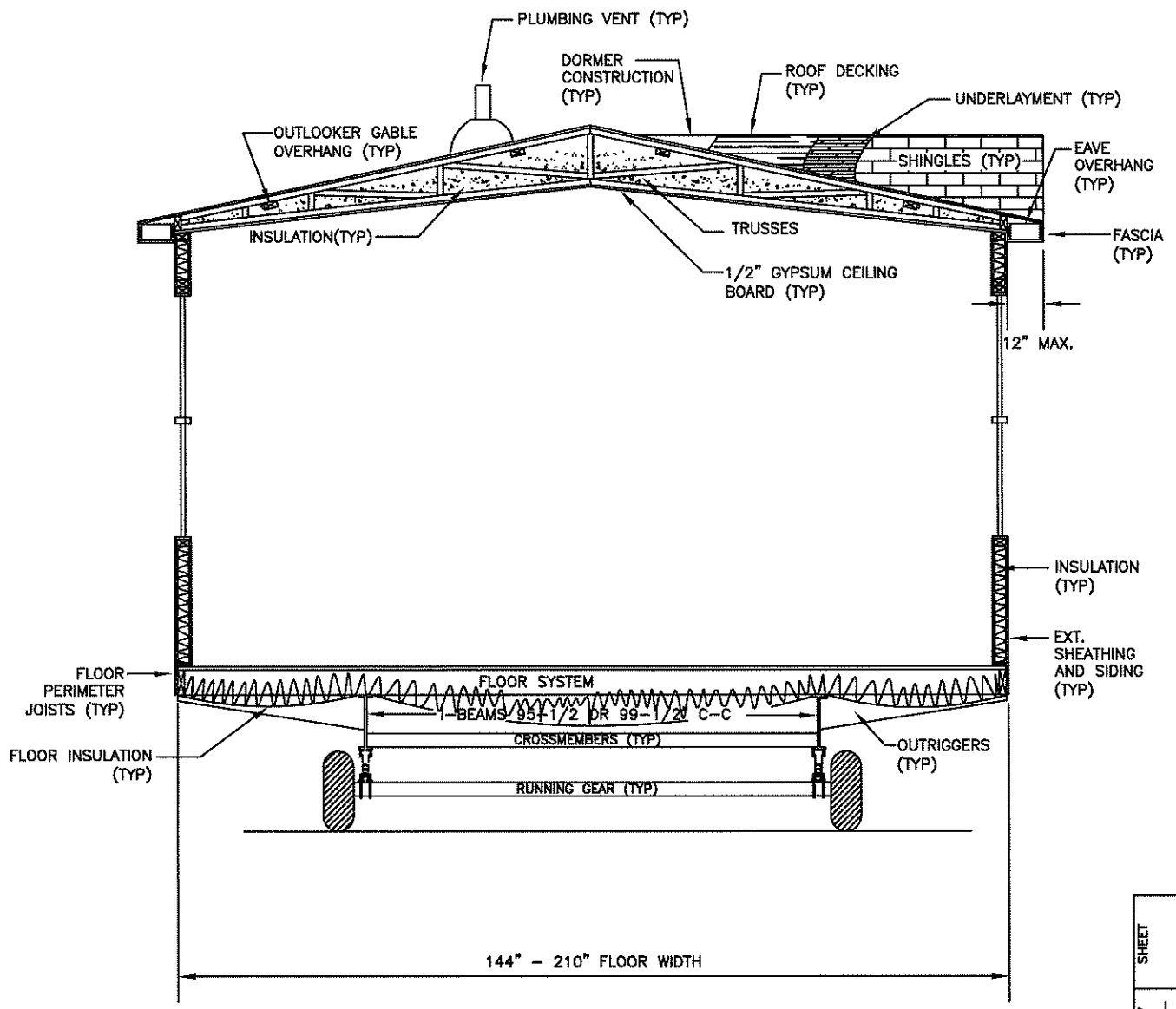
<b>CMH</b> MANUFACTURING	Model #: SAV16803D	Drawing #:
	Date: 1/2/21	Scale: N.T.S. 375125
Product Designer: E HARDWICK		16 X 80 Flex House
<b>D.W.V. and Supply Lines</b>		

**CMH MANUFACTURING, INC.**  
 Home Office  
 5000 Clayton Road, Maryville, TN 37804  
 PH: 865.380.3000 FAX: 865.380.3781

APPROVAL STAMP

TITLE  
**SINGLE WIDE  
 CROSS-SECTION**

BY	DATE	CHECKED	DATE
JGM	12/03/14		



**CROSS-SECTION**<sup>NTS</sup>

DWG NO. XS-1.02  
 REV --  
 SHEET